

# U8+ Module Functions Introduction

Released by yonyouup Information Technology Co.,Ltd  
in 2015

*Move Fast*



# Contents

01

About yonyou up

02

Financial Management

03

Intra -Supply Chain Management

04

Manufacturing Management

05

HR Management

06

CRM

07

Chain-retail Management &O2O

08

Business Intelligence

09

Mobile Application

Yonyou Up Information Technology Co., Ltd. is the largest local medium-sized enterprise focused management software and service provider in China. Yonyou Up is a subsidiary of Yonyou Group. Yonyou Up helps to our customers build affordable, cost effective system in every industry to increase productivity, profitability and competitiveness. Yonyou Up aspires to become a world-class “software + industrial solution + cloud service” provider in the world at the era of internet.



# Contents

01

About yonyou up

02

Financial Management

03

Intra -Supply Chain Management

04

Manufacturing Management

05

HR Management

06

CRM

07

Chain-retail Management &O2O

08

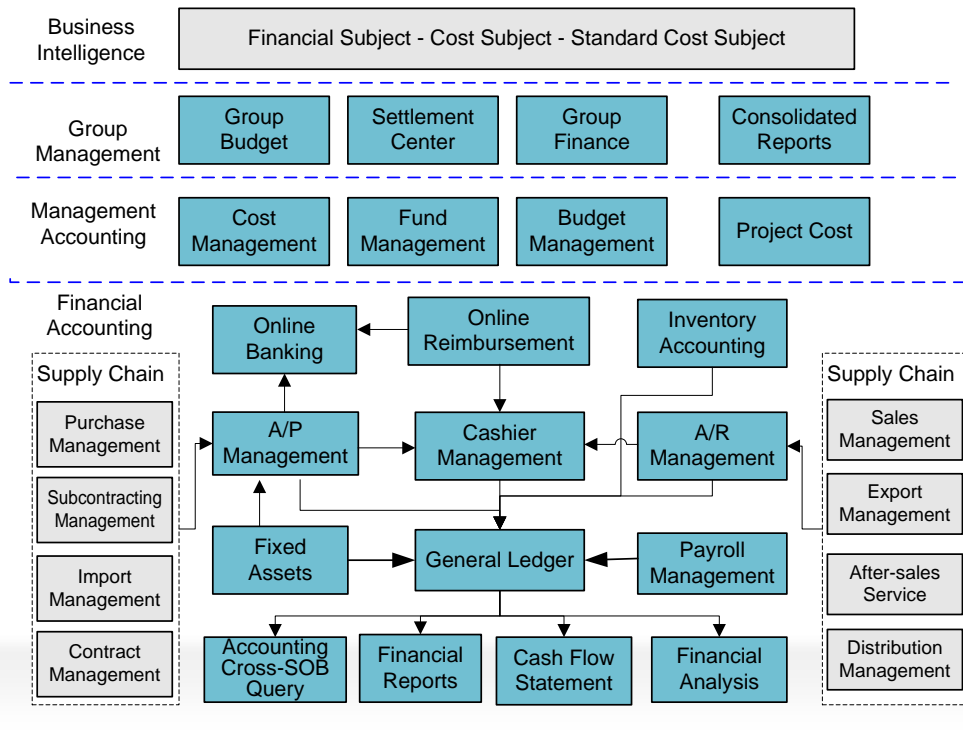
Business Intelligence

09

Mobile Application

# Solution Map

Includes financial accounting, management accounting, group application, and relevant financial analysis.



- **High efficient financial management:** The whole process of accounting automation enables financial staff to play a greater role in control, decision-making, analysis and evaluation.
- **Comprehensive fund control and strict budget management:** It facilitates the fund operation efficiency by means of cash tracking management, payment tracking management, cash flow statement and fund budget control; it provides basis for management decision-making by means of budgeting, budget control and budget analysis.
- **Refined cost management:** Standard cost management and analysis as well as actual cost accounting are provided as per enterprises' demand of management. And according to the refined degree of enterprises' accounting, it can provide multi-step comprehensive carry-forward and step-and-item carry-forward cost accounting. Moreover, according to the extent of application with different enterprises, it achieves management of product variety cost, order cost and process cost in turn.
- **Fast and accurate decision-making analysis:** A complete financial analysis function secures the accuracy of the financial analysis to help enterprises analyze the operation status and make decisions.

# Main Features

- In compliance with the accounting requirements of the New Accounting Standards in China.
- Cost planning, cost control, cost accounting and cost analysis.
- Supervising assets use, counting and assessment.
- Is an open and standard financial software interface, which can be integrated with tax and banking systems.
- Completing financial planning, prediction, control and analysis to advance the efficiency of fund utilization.
- Integrated with Purchase Management, Payables Management, Inventory Management, Online Reimbursement and General Ledger, budget Management achieves a budget control over the whole process of business operation.
- For group enterprises, application support can be used for group enterprises with group financial applications, internal funds settlement, and rapid completion of consolidated financial reports.

## Detailed solution — Financial Accounting

Includes modules of

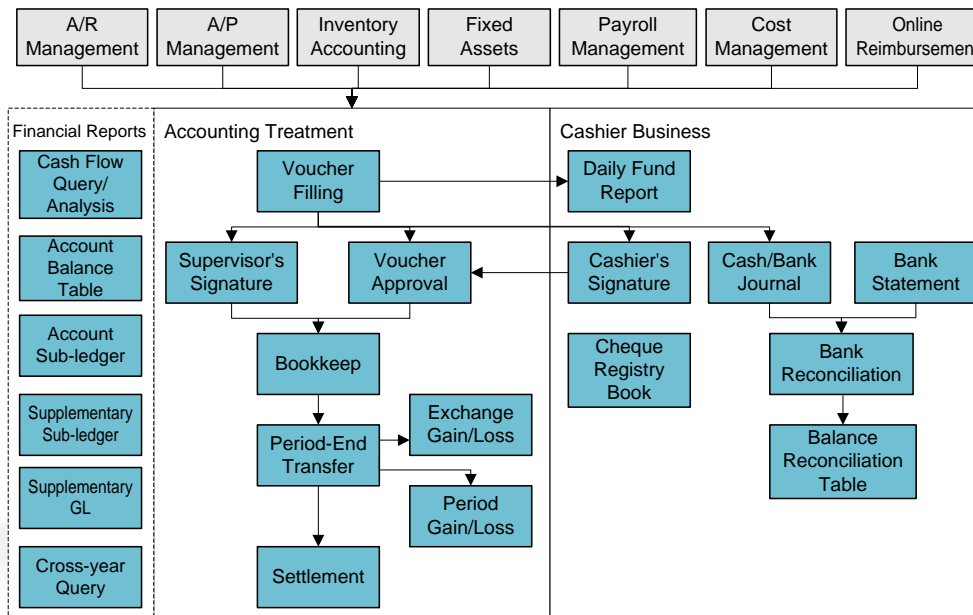
- General Ledger
- Account Receivables Management (A/R)
- Account Payables Management (A/P)
- Cashier Management
- Fixed assets Management
- Online Reimbursement
- Online Banking
- UFO Reports
- Financial Analysis

which contribute to cover the entire process of financial management from accounting to report analysis in different perspectives.



# Financial Accounting → General Ledger

Applicable to all types of enterprises and institutions, mainly used for voucher processing and account book management. It can be also used for business management involved with customers and suppliers, personal currency management, departmental management, project accounting and cashier management, etc



## Key Features -01

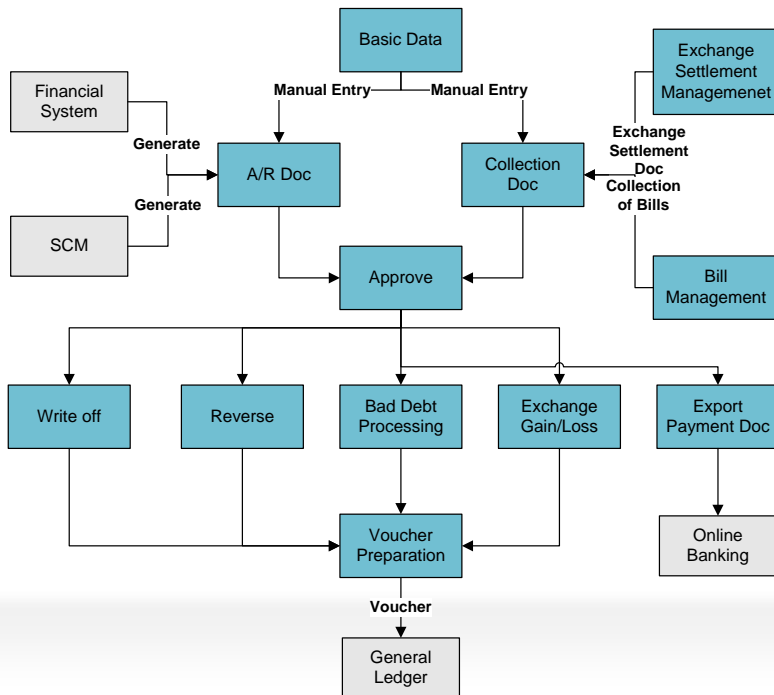
- A suitable environment can be set up. The code length, account level, exchange rates, voucher type, voucher format can be freely defined ; Auxiliary accounting functions including sectors, individuals, customers, suppliers and projects etc. can be used.
- Provides strict control of document preparation to guarantee the correctness. In the course of document preparation, funding deficit control, check control, budget control, foreign currency conversion error control can be used.
- Supports multi-currency accounting, including voucher entry, exchange gain/loss calculation, account tables display per currency.
- Supports voucher adjustment in a settled year or accounting period.
- Provides functions of batch approval and single approval, and supports cross-reference approval.

## Key Features -02

- Provides associated query for sub-ledger, general ledger, vouchers and original documents.
- Provides cross-year query function of supplementary sub-ledger.
- The following businesses can be completed automatically: month-end allocation, accrue.
- corresponding transfer, carry-forward of sales cost, exchange gain/loss, and gain/loss of the period.
- It proceeds in trial balance, reconciliation, settlement and generation of month-end work report.
- The flexible customized transfer function can meet transfer needs of various businesses.

# Financial Accounting → Account Receivables Management

In commercial and industrial enterprises, based on original documents such as invoices, expense documents and other A/R documents, the account receivables can be generated; Meanwhile, it provides functions to process collection, discount and endorsement of bills receivable.



## Key Features -01

- Approves sales invoices from the sales management system and export management system so as to confirm the receivables.
- Account Receivables documents can be entered except for those incurred from sales and export business.
- Supports processing of the collection of receivables automatically and manually; and collection can be done on basis of installment.
- Provides the function for collection and write-off of cash discount and sales deposit.
- Provides the function for the process of accrue, processing and withdrawal of A/R bad debt.
- Provides the function for calculation and treatment of the exchange gain/loss of foreign currency receivables.
- Provides the function for the negotiation, the settlement and subsequent write-off of export exchange received from export business.

.

## Key Features -02

- According to the contract settlement status, the receivables can be generated automatically , and statistics of plans for contract collection/payment can be checked.
- Provides management of bills receivable, processes registration, interest, endorsement, discount, and transfer-out of the bills receivable.
- Supports the processing of receivables and payables from one unit acting as both customer and supplier.
- Provides online payment function by exporting customers' payment documents onto the online banking system.
- Provides various alert functions so as to timely collect due receivables and prevent bad debts.
- Control of the credit limit will help enterprises to keep abreast of their customer's credit.
- Supports the management of collection/payment agreement based on shipment document or invoices, and period reports can be checked.
- Conducts statistical analysis on A/R aging, debts, payment collection so as to provide basis for funds inflow forecast.

# Financial Accounting → Account Payables Management

In commercial and industrial enterprises, based on original documents such as invoices, expense documents and other account payables documents, the account payment can be generated. Furthermore, it provides functions to process the invoicing and payment for bills payable

Year	Month	Day	Voucher No.	Subject		Vendor		Abstract
				Code	Name	Code	Name	
!0...				112301	预付供应商账款	01003	光明处理	Openning Balance
				112301	预付供应商账款	01003	光明处理	Sub-total
!0...				112301	预付供应商账款	03002	惠普	Openning Balance
				112301	预付供应商账款	03002	惠普	Sub-total
!0...				112301	预付供应商账款	08010	中兴	Openning Balance
				112301	预付供应商账款	08010	中兴	Sub-total
!0...				2201	应付票据	03001	AMD (中国)	Openning Balance
				2201	应付票据	03001	AMD (中国)	Sub-total
!0...				2202	应付账款	01002	辰环手机配件	Openning Balance
				2202	应付账款	01002	辰环手机配件	Sub-total
!0...				2202	应付账款	01003	光明处理	Openning Balance
				2202	应付账款	01003	光明处理	Sub-total
!0...				2202	应付账款	01004	博大存储	Openning Balance
				2202	应付账款	01004	博大存储	Sub-total
!0...				2202	应付账款	03001	AMD (中国)	Openning Balance
				2202	应付账款	03001	AMD (中国)	Sub-total
!0...				2202	应付账款	03003	威盛电子	Openning Balance
				2202	应付账款	03003	威盛电子	Sub-total
!0...				2202	应付账款	03009	利屏科技	Openning Balance
				2202	应付账款	03009	利屏科技	Sub-total

## Key Features -01

- Approves invoices of the purchase management system and import management system so as to confirm the payables.
- Account payables documents can be entered except for those incurred from purchase business and export business.
- Supports processing of the payment of payables automatically or manually .Payment can be done on basis of installment.
- Generates the payment requisition based on business documents such as contract, order, and invoice. Approval and payment processing for the payment requisition is also available.
- Supports payment requisition submitted from the purchase system, contract system and subcontracting system to realize source control of capital expense.
- Can be integrated with applications from the budget.
- Processes and writes-off cash discount of payables.
- Calculates and processes the exchange gain/loss of foreign currency payables.
- Generates purchase expense documents and account payable Doc according to purchase business and provide the function for the processing of payment.

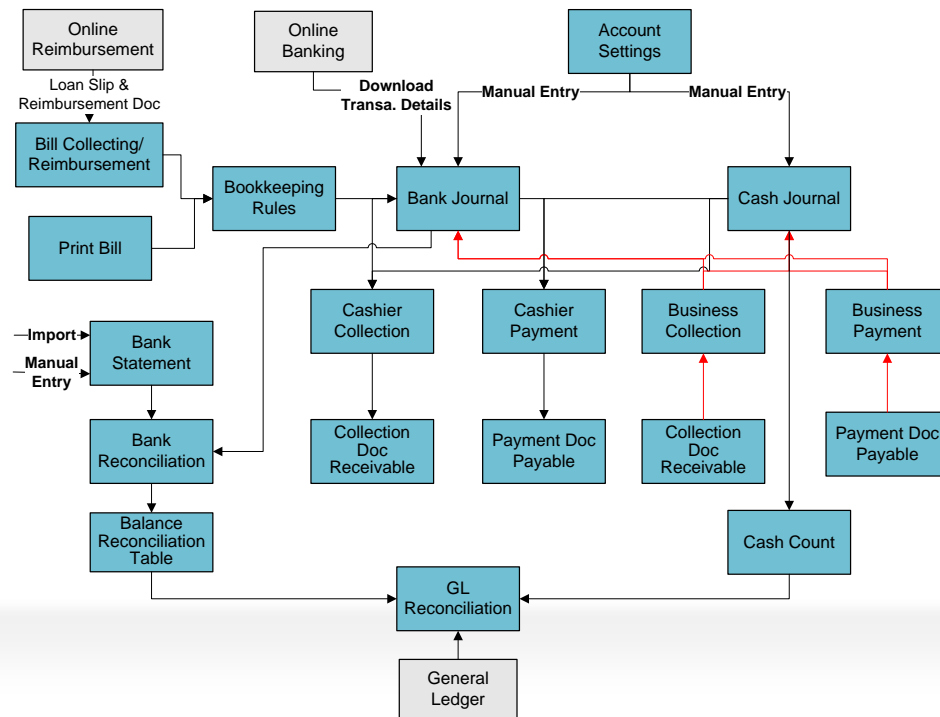


## Key Features -02

- Provides the function for the foreign exchange settlement and subsequent processing of write-off for import business.
- Supports the function of direct reversal of advance collection from import agency to the suppliers' receivables.
- Provides direct online payment function by exporting payment documents onto online banking systems.
- According to the contract settlement, payables can be generated automatically; and supports statistics of contract collection/payment plans.
- Provides the function for the management of bills payable.
- Supports the processing of receivables and payables from one unit acting as both customer and supplier.
- Supports the management of receivables and payables agreement based on receipt documents, invoices and other account payable Doc; and period reports can be created.
- Provides various alerts to remind of timely settlement of due payables.
- Conducts statistical analysis on account payables aging, debts, payment collection so as to provide basis for funds outflow forecast.

# Financial Accounting → Cashier Management

Based on the principle of cashier journal as its core, provides management of cash inflow, cash outflow and inventory. Cash management, bank deposit management, bill management, account revenue & expense can be implemented automatically.



## Key Features -01

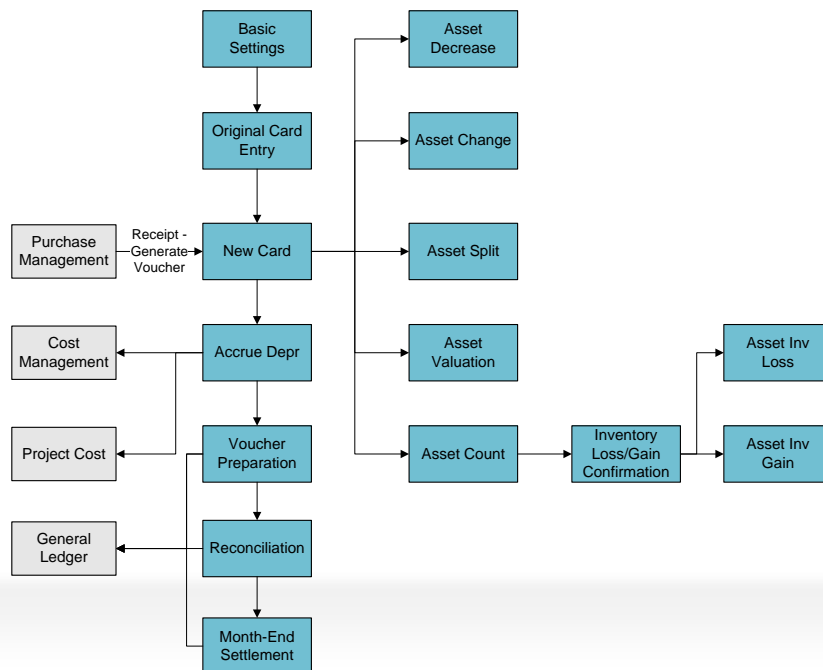
- Provides strict management of permissions. Function permissions are set up respectively for entry, query, transfer, cash counting and bank reconciliation of cash accounts and bank accounts.
- Provides the function for bookkeeping revenue & expense daily book for cash and bank deposit.
- Provides the function of cash counting.
- Provides the function for reconciliation of bank deposit daily book and bank statements.
- Provides the function for the auditing of long-term outstanding items.
- Can be preset with a wealth of bank bill templates and provides the function of precise formatted print of the bank bills.
- Allows queries of the print records and bill print information at any time. The cash and bank journals are automatically generated.

## Key Features -02

- Supports the processing of check collection and check reimbursement upon loan and reimbursement via online reimbursement system. After the confirmation of payment, the payment document can be directly registered in bank journal or cash journal.
- Provides perfect bill management including bill collection, reimbursement and prepayment. The bill processing information can be used to automatically generate the cash journal and bank journal.
- Integrated with Receivables Management module and Payables Management module, the Cashier Management module can register collection documents and payment documents in cash bank account journal; and also automatically generate corresponding collection/payment documents according to the cash bank collection/payment journal registered by cashiers.
- Provides the function to settle payment in the cashiers system for payment requisition approved in the account payable system.

# Financial Accounting → Fixed assets Management

Provides asset management, depreciation accrual and other functions. It can be applied in dynamic management of the total value of fixed assets and accumulated depreciation data. It can assist the asset management department in the management and analysis of various indicators of fixed assets entities.



## Key Features -01

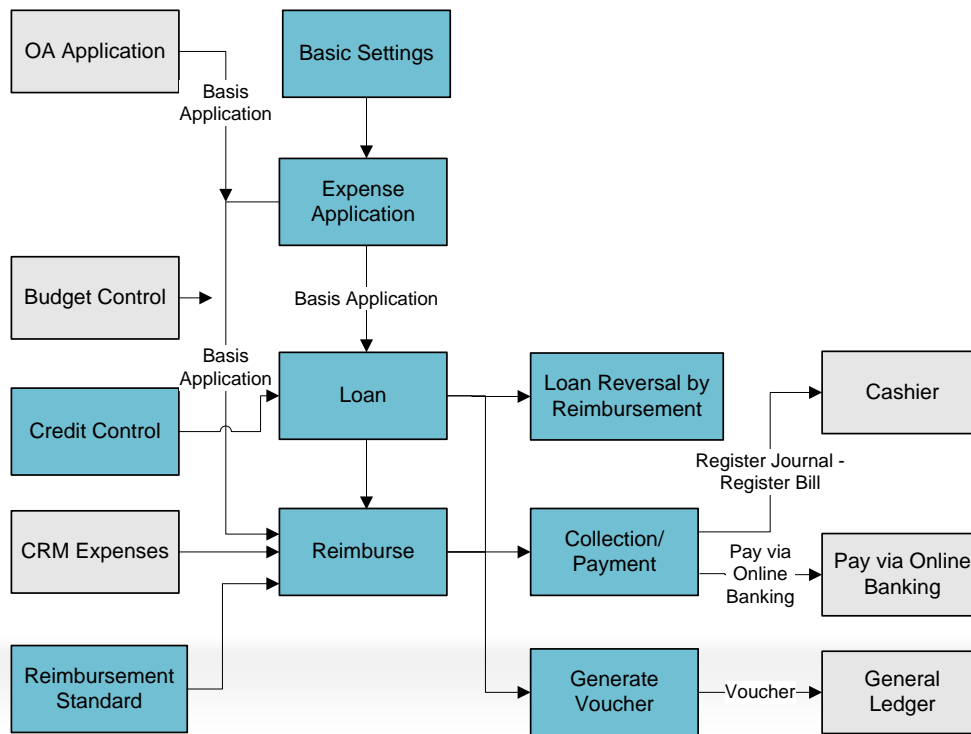
- Provide the function of asset card management, which can make records of information about asset original value, depreciation amount, service years, operating department, storage position, as well as maintenance, repair and spare parts.
- Provides preset depreciation method in compliance with the Accounting System, meanwhile providing flexible user-defined depreciation methods.
- Supports the function of automatic accrue depreciation and the processing of accrue depreciation of new assets in the current month.
- Provides the function for institutions to control and accrue depreciation in terms of fixed assets categories and their permissions, while providing the function of depreciation and analysis in terms of funding sources for assets purchase.
- Supports the function for the processing of multiple dept use and allocation of fixed assets.
- Can handle various assets changes, including changes of original value, transferring between departments, changes of usage status, adjustment of service years, adjustment of depreciation method, adjustment of net salvage value (rate), adjustment of total workload, adjustment of accumulated depreciation, adjustment of asset category, devaluation provision accrue, as well as storage location change and user change.

## Key Features -02

- Provides the function for the evaluation of fixed assets, including the evaluation of original value, accumulated depreciation, service years, net salvage value (rate), and depreciation method.
- Provides the function for foreign currency device for asset management.
- Supports barcode asset management. The module supports printing and auto-counting by barcode equipment, meanwhile providing automatic approval against inventory gain and loss.
- Provides “fixed assets expiration table”, which is used to display the information of expired fixed assets in current period.
- Integrated with purchase management and the account payable management, it can handle the whole process of asset purchase management including asset purchase requisition, arrival of assets, card creation. In this way, budget control for assets can be implemented.
- Integrated with the module of equipment management, the journal information of equipment in module of the equipment management can be obtained by retrieving data from the module of fixed assets.

# Financial Accounting → Online Reimbursement

deals with daily loan business and reimbursement business of staff, and control the expenses in the course of reimbursement.



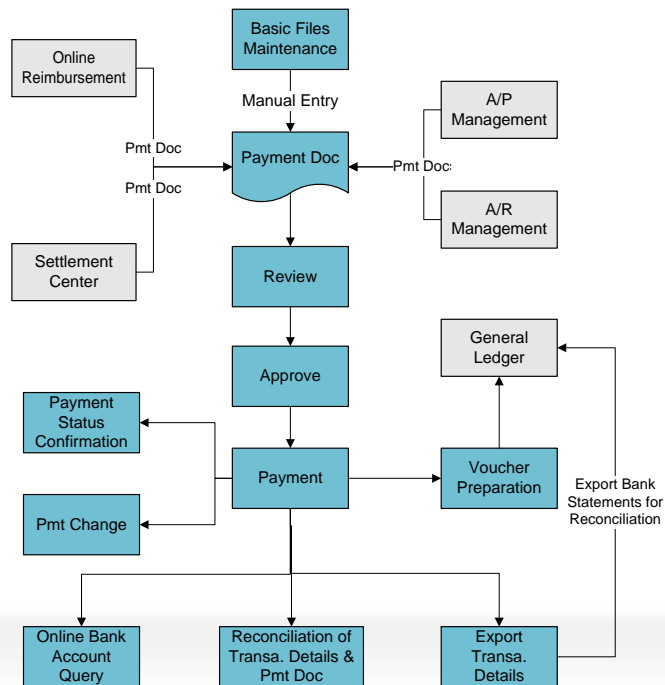


## Key Features

- Provides the function for convenient online bill filling, online approval and online money remittance.
- Supports the filling and approval of expense application Doc.
- Supports the processing of cash advance and check advance, loan approval, credit control, over credit loan and a variety of other follow-up processing approaches.
- Supports various forms of reimbursement such as personal reimbursement and reimbursement on behalf of others, depending on expense application.
- Supports write-off for loans in same or different currencies by reimbursement expenses.
- Supports collection/payment in synchronization with loan and reimbursement and cross-period collection/payment.
- Supports repayment and error correction.
- Provides a multi-dimension reimbursement control criteria in terms of personnel level, destination, transportation means and fund amount. It support budget control and budget query for expense application, loan, and reimbursement.
- Provides strict permissions for approval and query. Query can be made in different dimensions, such as in the perspectives of expense items and budget implementation performance.

# Financial Accounting → Online Banking

Online Banking (also called Bank-Enterprise Direct Link or BEDL) is designed for online access of enterprises' financial software into the banking system.



## Key Features -01

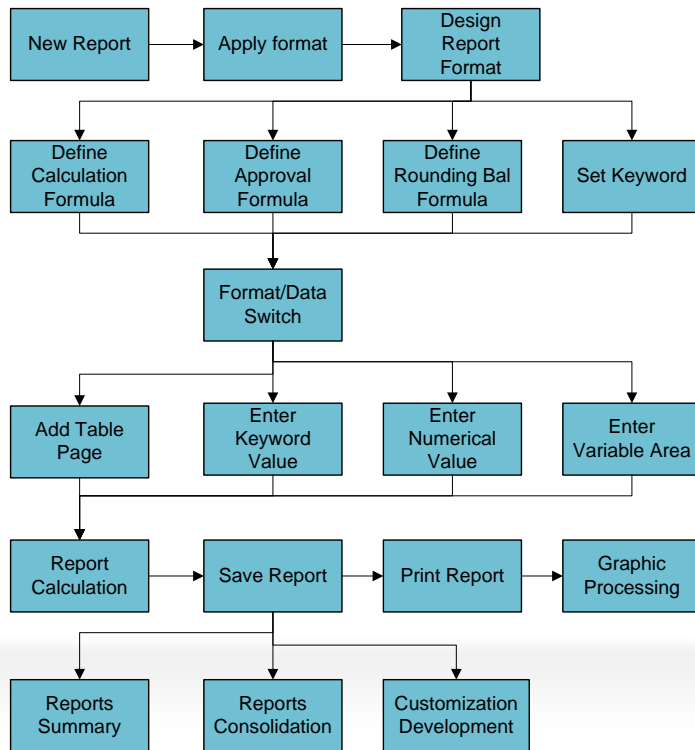
- Be applicable to mainstream online banking services in China. It supports Bank-Enterprise Direct Link business with nearly 40 commercial banks, including Bank of China (BOC), Industrial and Commercial Bank of China (ICBC), Construction Bank of China (CBC), Agricultural Bank of China (ABC), Bank of Communications (BC), China Merchants Bank (CMB), China Everbright Bank (CEB), Hua Xia Bank (HXB), China Minsheng Bank (CMBC), Industrial Bank (CIB), Shenzhen Development Bank (SDB), Shanghai Pudong Development Bank (SPDB), CITIC Industrial Bank (CITICIB), Guangdong Development Bank (GDB), Bank of Beijing, Mizuho Corporate Bank (MHCB), and Bank of Tokyo-Mitsubishi UFJ (BTMU).
- Provides the function for processing payments for business accounts, through which real-time queries of payment status and transaction history can be implemented.
- Allows payment to private accounts of banks such as ICBC, CMB, ABC, CEB etc., to help enterprises implement online payment of staff reimbursements.
- Provides services for enterprise groups. Through Online Banking services, group users can query information about the account balance and transactions of each subsidiary. The system also includes services for allocation of funds among internal companies and account management.
- With the online account transfer function, enterprises can implement online payment and account transfer between different accounts via the internet.

## Key Features -02

- Provides the function of bank account balance query, through which users can make online queries of account balance of the current day or of a given day. It will compare and analyze the balance of the current day and the account balance.
- Provides the function for online statistics query, which conducts online query of bank account transaction details of the current day and historical details of bank transactions.
- Provides the function for reconciliation of payment documents and bank transaction details, which enables the check and examination of payment documents and transaction details returned from banks at a given time.
- Supports file, BEDL and other approaches for interface access.
- Apart from setting up corresponding permissions for operators, the system also designates different operation accounts with operators and sets payment limits for each transaction, imposing strict controls over fund security.
- Provides the function to support download of transaction details to be exported to Account Receivable Management system, Account Payable Management system, Settlement Center system and General Ledger system for the generation of collection documents, payment documents, fund allocation documents and bank statements, enabling enterprise to handle outstanding accounts.

# Financial Accounting → UFO Reports

Can generate reports in a flexible way, with which users can freely define various financial reports and manage summaries and conduct statistics over analysis tables.



## Key Features -01

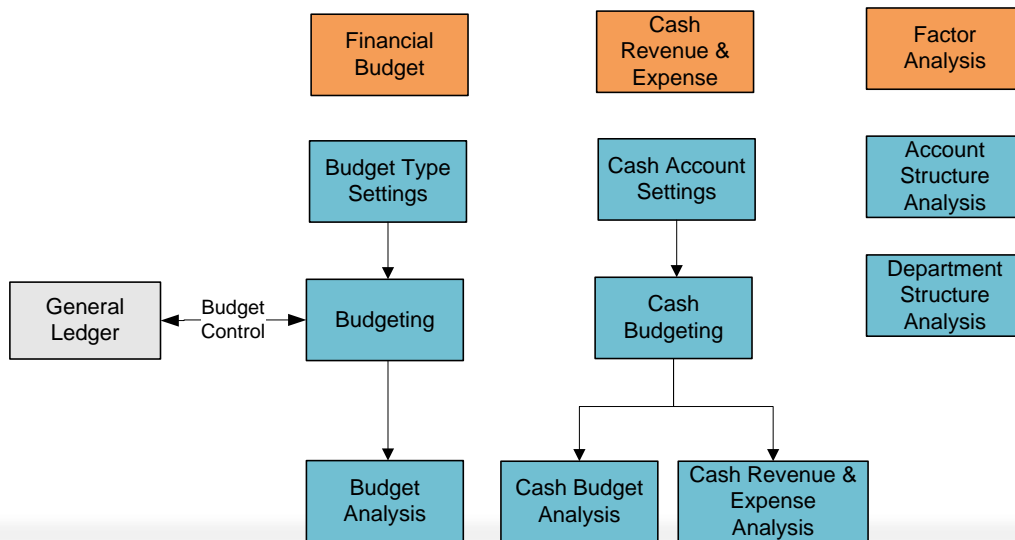
- Can generate real 3D reports. With this feature, the module of UFO Report provides a wealth of practical functions to implement 4D processing power of 3D reports.
- Provides financial report templates for various industries to help generate complex reports. It also provides the function to customize templates.
- Provides functions of data collection, data summarization and unique function of data visualization, through which the data from hundreds of reports are obtained to display on the same page by condition, making it convenient for data comparison and analysis.
- Affords a powerful capability for customization development, based on which a report system special for the user's unit can be developed.
- Supports multiple-window display and processing. It can open up to 40 files and graphic windows at the same time. It has the capability to split a report to multiple windows so as to display different parts of the report at the same time.
- Provides powerful data processing function: A report can accommodate up to 99999 sheets, each sheet can accommodate 9999 rows and 255 columns.
- Can generate a sequence of reports as per industry, and support associated query of sub-ledger.
-

## Key Features -02

- Accepts a variety of file formats to be directly opened and saved as, such as text file, DBASE, Access database, Excel and Lotus 1-2-3 form files, and provides import and export interfaces to financial reports generated by other financial software. Meanwhile, it provides a wealth of print control functions.
- Provides report data interface: It provides interface to financial reports generated by Beijing Join-Cheer Software System. It supports the national standard Information Technology -Accounting Software Data Interface (GB/T24589.1-2010)
- Reports generated by the module of UFO Report can exchange data with Microsoft office.
- Supports scheduled calculation of report data.
- Supports the combined application of consolidated financial reports.
- Can be used as the basis for the compilation of consolidated financial reports. Branches may download the reports through UFO from the consolidated reports module of the head office and submit via UFO after filling; while the head office implements the consolidation in the consolidated reports module.

# Financial Accounting → Financial Analysis

Enables evaluation of an enterprise's financial status, past business achievements and future prospects based on financial budget data and accounting data. This system adopts special financial budget/control/analysis methods for further processing, sorting, analyzing and studying financial budget data and accounting data to gain useful information for proper decision-making.





## Key Features

- Provides various functions including automatic financial budget, financial budget control, and comparison & analysis of budget and actual data, to enable both fine budget management by individual departments/accounts in items and rough budget management by all departments/items.
- Analysis methods available include comparison analysis, structural analysis, absolute analysis, fixed-base analysis, period-on-period analysis, and trend analysis.
- Analyses available include budget analysis, factor analysis, basic financial indicator analysis, cash revenue & expense analysis, cash revenue & expense change analysis, cash revenue & expense structural analysis.
- Provides multiple graph analyses which are intuitive, clear and easy to understand.
- All analysis tables generated can be saved as report files, text files, DBASE files, ACCESS files, EXCEL files or LOTUS123 files.
- Areas for text description are added to insert explanations of analysis tables.

## Detailed solution — Management Accounting

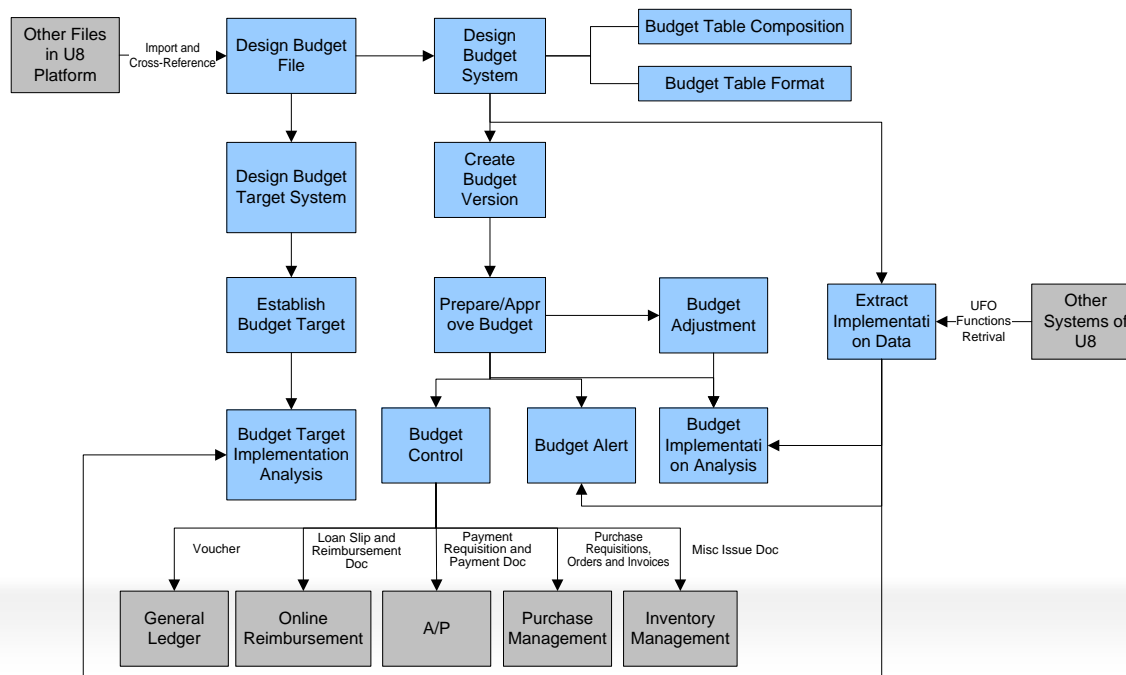
Includes modules of

- Budget Management
- Cost Management (Item)
- Cost Management (project)
- Fund Management

which help enterprises shift from originally financial accounting-oriented to financial management-oriented, thereby achieving process control and target management.

# Management Accounting → Budget Management

Be for systematic and detailed descriptions of an enterprise's operation for a given period, in the form of Currency. It includes four modules; **budget system design, budgeting and adjustment, budget control and budget implementation & analysis.**



## Key Features -01

**Budget system design:** According to the management needs of enterprises, it provides personalized design of budget management system. Budget Management System is composed of multiple budget tables, based on budget items and budget indicators.

- Design of budget items: analyzes business characteristics and management requirements and designs budget items covering a full scope of budget management.
- Design of budget indicators: The system is preset with common budget indicators. Furthermore, enterprises can add budget indicators at their own discretion.
- Design of structural budget tables: By selecting elements of a budget table (including budget item, budget indicator, budgeting cycle and budget dimension) the system can automatically generate the budget table structure. The format of budget table is generated based on the setting of row & column position of each element.
- Design of manually-made budget tables: Once budget table elements are directly selected into the row/column dimension of a budget table, the system generates a budget table structure format.

## Key Features -02

**Budgeting and adjustment:** Budgeting is performed by means of zero-base budget, fixed-base budget, flexible budget and rolling budget.

- Basic flow of budgeting: formulating budget→submitting budget→approving budget.
- Based on zero-base budget, fixed-base budget adds historical actual indicators or historical budget indicators as reference columns and generates budget data for the budget year with a reference formula.
- Based on zero-base budget, flexible budget adopts different versions of budget to manage the overall budget data under different business volume hypotheses.
- Based on zero- base budget, rolling budget inputs data according to compilation frequency (for example, on a monthly or quarterly basis) so that budget table template automatically updates in budgeting period.
- Budget adjustment through different budget versions: This method is applicable to large-scope adjustments. It allows adding new budget versions to undergo modification, submission and approval based on the budget data prior to the adjustment.
- Budget adjustment through budget adjustment doc: This method is applicable to small-scope budget adjustments. Budget adjustment can be made through budget adjustment doc, which is effective after approval.

## Key Features -03

**Budget controlling:** The system can exercise control over controllable expenses, funds outflow, capital expenditure and expenses. It provides two controlling methods; rigid control and flexible control.

- Controlling indicators support the configuration of controlling rules for amount indicators and quantity indicators. It can set balance, occurred in current period, cumulative occurred in current period, overall budget and overall cumulative budget occurred.
- Controlling method supports strict control, dedicated approval, prompt only, over-budget with no prompt (mainly for cases where data for implementation is from business documents for implementation of budget control).
- Control objects include phase of vouchers in GL accounting business, phase of loans and reimbursement in online reimbursement business, phase of payment requisition and payment in payment business; phase of purchase requisition, purchase order and purchase invoice in purchase business; phase of other issue documents in issue business.

## Key Features -04

**Analysis of budget implementation:** By accessing actual implementation data, the system can perform budget analysis to enable enterprises to control budget implementation progress, based on which enterprises can adjust business operations. Budget implementation is an important basis for assessment of an enterprise's performance.

- Data for implementation can be derived from the controlling data incurred in the budget control phase, or obtained from actual data from other systems by means of UFO function.
- The system can perform analysis of budget completion, to enable enterprises to master the completion progress of the year. The system can perform variance analysis to allow enterprises to gain an understanding of the variance between budget and actual situation in different periods. The system can design comprehensive analysis tables to support unconventional budget analysis table design and data retrieval.
- According to the designed variance analysis program, the budget implementation analysis report presents managers with important variances highlighted in different colors.

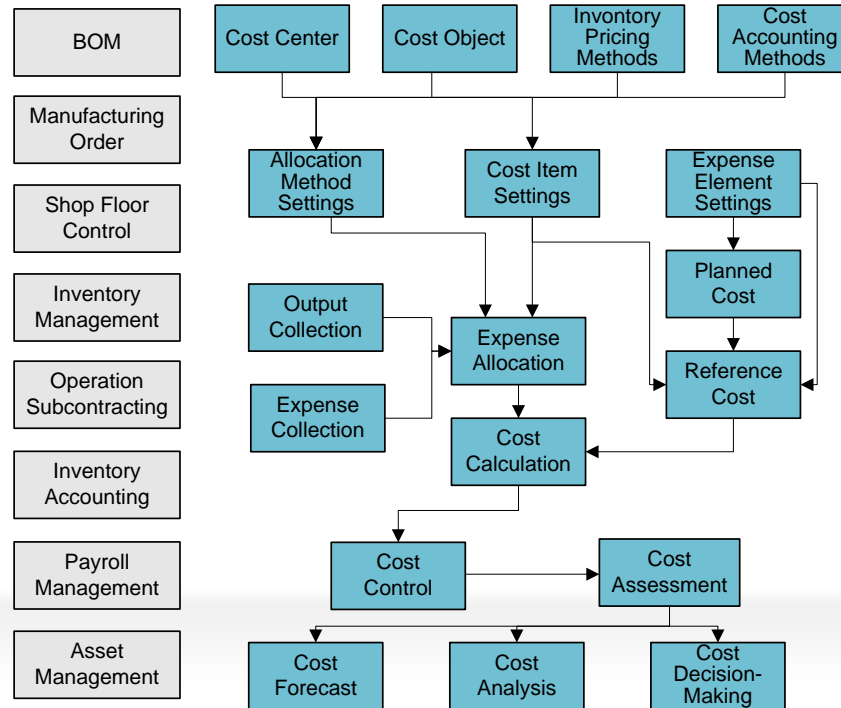
## Key Features -05

**Group budget management:** For budget system and budgeting, the group budget management module enables group headquarters to design a budget system and hand it out to its subsidiaries. With the designed budget system, a subsidiary can make proper adjustments according to its own management requirements. The subsidiary shall then submit adjustments to the group headquarters for approval. Headquarters shall examine and approve the adjustments accordingly. The subsidiary shall extract implementation data for the approved budget and report back to headquarters. For budget control system, the group budget management module enables a group to exercise three control modes: centralized control over the whole group, subsidiary-based control, or a combination of both.



# Management Accounting → Cost Management (Item)

Provides procedure-based and item-based cost management. It performs cost accounting and cost analysis in terms of cost item, to satisfy the need of enterprises for refined cost management and cost assessment to reduce costs and improve efficiency.



## Key Features -01

- Supports batch-method and varieties method cost accounting and order cost accounting.
- For inventory pricing, it supports monthly weighted average cost calculation and moving weighted average cost calculation.
- Supports configuration of flexible cost items, as well as cost items such as material expenses, labor expenses and overheads. It also supports the calculation of details of bottom-level materials.

## Key Features -02

### Cost Accounting:

- Provides various methods for expense allocation in terms of overheads, labor expenses, and material expenses, which can be measured according to actual hours, quota hours and output. It also supports customer-defined methods of expense allocation.
- Supports various expense allocation methods between WIP products and completed products.
- Supports cost accounting of co-products and by-products and provides various allocation methods in terms of sales price.
- Supports automatic access to data on cost objects, material consumption, overheads, labor expenses and labor hours from systems of manufacturing orders, inventory management, general ledger accounts, fixed assets, payroll management, shop floor management and operation subcontracting.

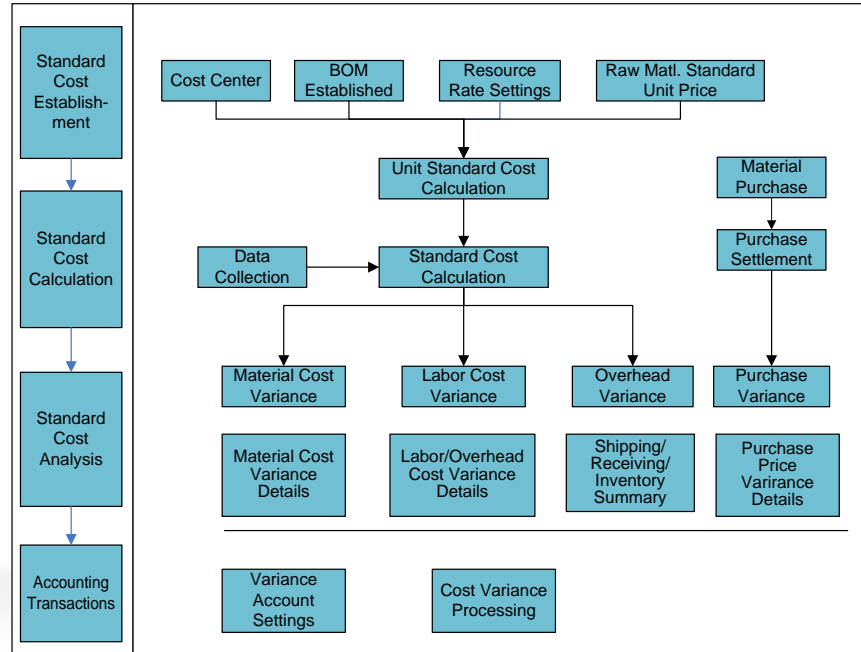
## Key Features -03

### **Cost analysis:**

- Based on comprehensive cost analysis, it enables query of inventory in terms of issue summary based on cost items, cost-item-based inventory receipt/issue summary, sub-item sales cost details, sub-item cost details of completed products and sub-item cost details of WIP products. At the same time, it makes comparison between and analysis on actual cost and standards.

# Management Accounting → Standard Cost Management (Item)

Be a complete system which, by formulating unit standard cost, cost accounting of standard cost, variance analysis of standard cost, financial processing and related reports, supports enterprises with standard cost accounting, cost analysis and control, and cost assessment.



## Key Features -01

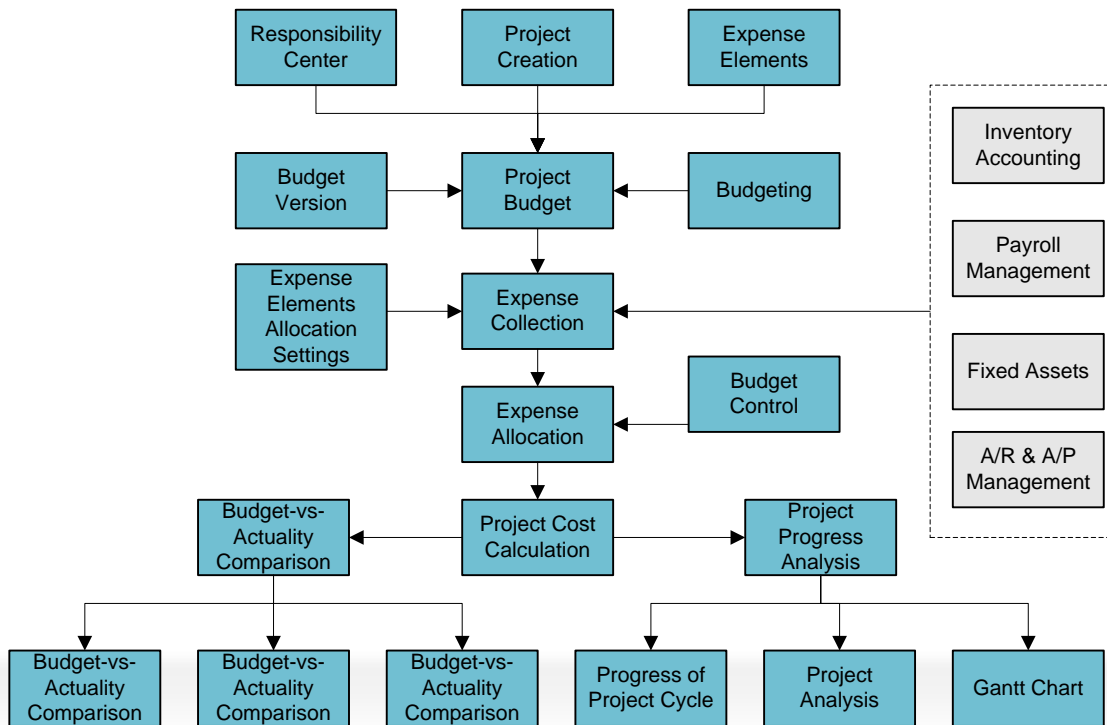
- Supports standard cost accounting at the level of bill of lading and order.
- Supports the formulation of unit standard cost of various versions. In light of standard resource rate, standard cost BOM, standard routing and work center, formulation can be made in three aspects; direct material costs, direct labor costs and overheads.
- Supports two different methods of standard cost variance carry-forward; direct carry-forward of gains and losses in current period, or adjusting sales cost and inventory.
- Supports standard cost accounting of co-products and by-products.
- Supports automatic access to data on cost objects, material consumption, overheads, labor expenses and labor hours from systems of manufacturing orders, inventory management, general ledger accounts, fixed assets, payroll management, shop floor management and operation subcontracting.

## Key Features -02

- Supports variance calculation for standard cost BOM variance, purchase price variance, material quantity variance, rate variance and efficiency variance of direct labor costs, rate variance and consumption variance of overheads.
- Provides various versions of standard cost analysis reports, including summary tables of sales cost, summary tables of order cost, details of order cost variance, variance tables of material cost, variance reports of overhead, statistical tables of sales income, based on which an analysis of variance rate and the reasons for the variances can be made.

# Management Accounting → Cost Management (project)

Be suitable for use in the building construction industry, publishing & circulation industry and other enterprises involved in project management (such as construction equipment installation projects).



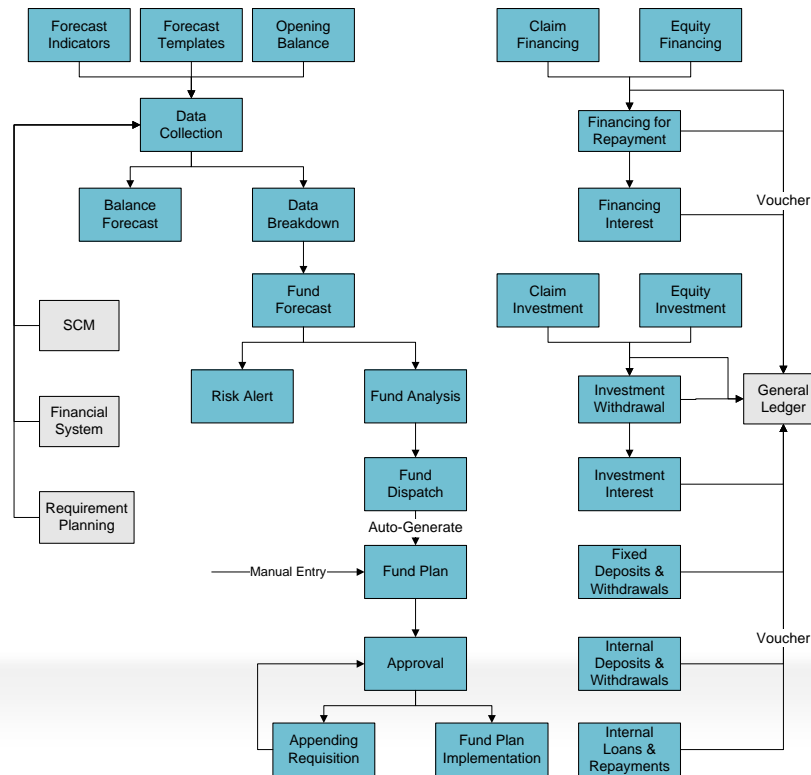


## Key Features

- Flexible setting of cost accounting unit for any project: enables the user to set, modify and define any cost responsibility centers.
- Flexible configuration of common cost allocation rules: enables the user to set, modify and define allocation rules for indirect costs (common costs).
- Setting project cost elements on demand: enables the user to set, modify and define the composition of cost elements such as material costs, labor costs, and management costs and facilitates fine accounting.
- Concise and effective project budget management: enables the user to 1) rapidly complete project budgeting; 2) complete entry, approval, summary, and accounting processing of daily expenses; and 3) control the expenditure of project costs according to the budget.
- Accurate allocation & management of common costs and expenses: enables the user to 1) calculate costs in line with actual situation; and 2) allocate, carry-forward and process accounts of common costs (indirect costs) based on responsibility centers.
- Daily compilation of cost statistics featuring detailed project cost analysis and budget variance analysis.

# Management Accounting → Fund Management

Provides comprehensive, flexible, practical and accurate fund forecast, enabling enterprises to gain an understanding of funds flow, the amount of flow, and future gains/losses



## Key Features -01

- **Fund forecasting:** By calculating fund inflow, fund outflow and net cash flow and fund balance at each phase on the time axis, the system enables enterprises to forecast future fund shortages and fund surplus so as to prevent payment risk and improve the efficiency of funds.
- **Fund planning:** offers the function of fund planning, enabling enterprises to compile fund plans, examine and approve fund plans, add fund and analyze the implementation of fund plan. By means of the management of the whole process of fund planning, it enables enterprise to operate business smoothly.
- **Internal fund management:** provides the function for internal business sectors to deposit money, draw money, borrow and repay money and calculate interest, which enables enterprises to improve internal fund efficiency.
- **Financing management:** provides the function for an enterprise's financial department to calculate and manage issuance of claims, equity raising funds, capital repayment and interest payment, enabling an enterprise to accurately calculate financing cost.

## Key Features -02

- **Investment management:** provides accounting and management of an enterprise's investment activities concerning purchase of bonds and stocks to reflect the efficiency of funds.
- **Fund interest calculation:** provides the function to manage internal loans and deposits, calculate interest, and perform internal assessment.
- **Fund surplus and shortage analysis:** In light of the result of fund forecast, it provides the function to check fund inflow, outflow, net cash flow and fund balance in a future business period, based on which analysis and reasonable adjustment of fund plan can be made. Through fund analysis, it enables enterprises to make up fund shortages and make reasonable arrangements for surplus fund to avoid idle funds.
- **Fund risk alert:** In light of the result of fund forecast, it can provide alert of fund risks (fund shortage). According to enterprise-defined alert days, it can also prompt alerts for financing and investment, fixed deposit and guarantee business.

# Contents

01

About yonyou up

02

Financial Management

03

Intra -Supply Chain Management

04

Manufacturing Management

05

HR Management

06

CRM

07

Chain-retail Management &O2O

08

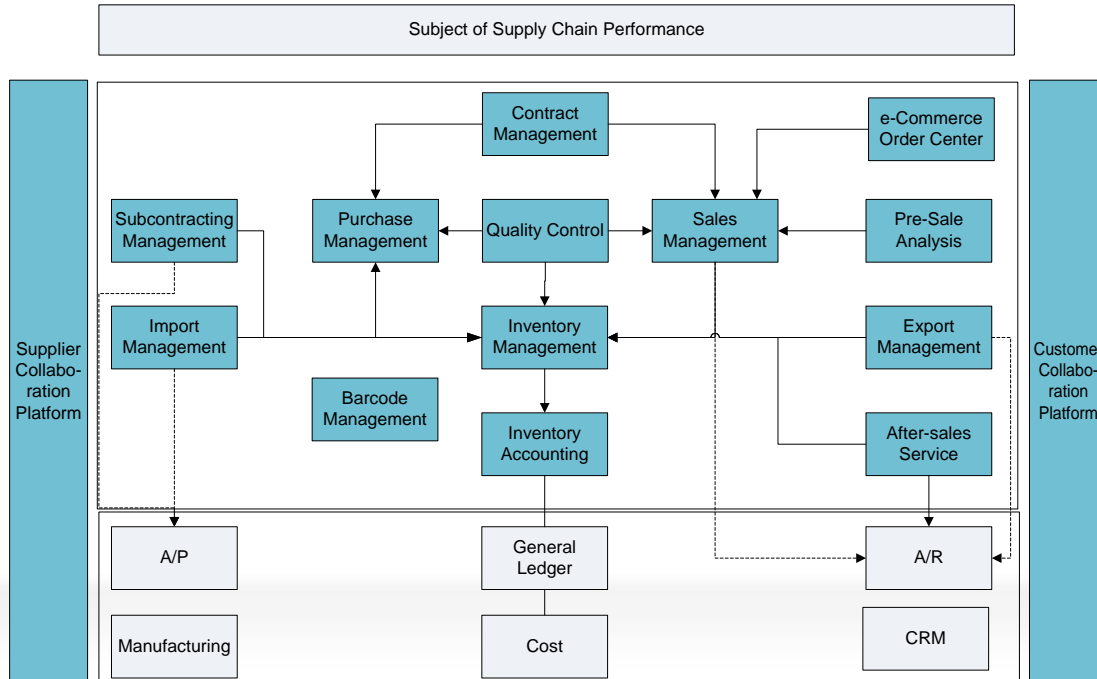
Business Intelligence

09

Mobile Application

# Solution Map

Provides enterprises in the manufacturing industry and distribution industry with a solution that covers the whole process of internal logistics. It integrates financial management, CRM, and manufacturing management systems for realization of information-based management of the enterprises' value-added processes.



- **Pays close attention to any change in the enterprise's performance** in terms of profitability growth (T: time; Q: quality; C: cost; S: service; F: flexible) for implementation of customer-oriented and order-driven market operation mechanism. These 5 elements form the core of basic enterprise management that needs improvement.
- **Provides users with a business cycle** consisting of “planning - release - implementation - monitoring - feedback - improvement” and establishes on a unified operation platform a flexible system which integrates an alert platform, work process platform, message portal and Intra - Supply Chain collaboration platform for fast and effective determination of various business scenarios to identify abnormalities and respond accordingly.

# Main Features

- **ATP queries of order-taking** make predictions on the completeness of item sets before order-taking to ensure timeliness of order-taking.
- **Multiple sales modes supported** including PTO, ATO, MTO, and ETO.
- **Lifecycle management of contracts supported** including contracts of collection & payment type such as construction contracts, contracts for work, service contracts, technological contracts; and (general & phased) purchase & sales contracts.
- **Keeping abreast of the performance of the sales department and sales representatives at all times.**
- **Establishing a complete plan management system** for implementation of purchase for customer order and sales issuing in business trace mode.
- **Establishing a supplier evaluation system** and quota management system for reasonable selection of supplier.
- **Supporting diverse item management requirements** on batch, serial number, supplier ownership and shelf-life control.



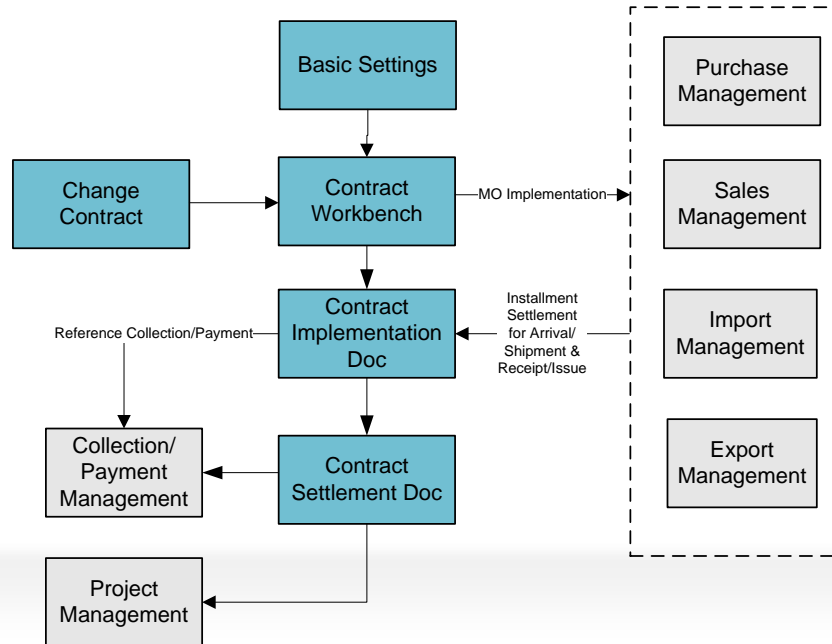
# Main Features

- **Keeping accurate accounting of inventory costs** and recording of purchase, completion, sales, and all financial transactions that involve material cost flow change.
- The Intra -Supply Chain system implements strict matching of upstream/downstream business and business ownership and collection responsibilities, **by means of QC control**, business process execution quantity control, timeliness control, inventory receipt/issue quantity control, and strict association of financial doc execution status/process alert and business trail.
- **Enables managers to monitor the overall business operation status** and facilitates smooth and orderly implementation of business processes.

In general, the Intra -Supply Chain system establishes an operation mechanism that runs highly effectively for business link coordination, quickens customer response time and improves customer satisfaction.

# Intra -Supply Chain Management → Contract Management

Realizes contract lifecycle management. Features include: management of contracts of collection & payment type such as construction contracts, contracts for work, service contracts, technological contracts; (general & phased) purchase & sales contracts, such as material purchase contracts, product sales contracts and equipment purchase contracts.



## Key Features -01

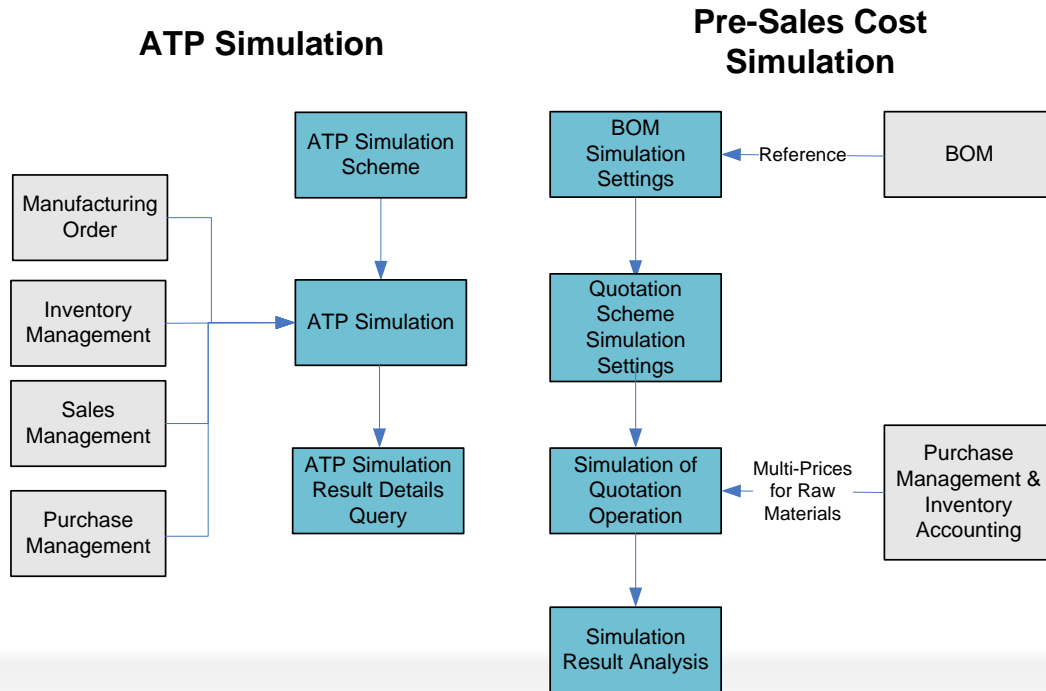
- Contracts are divided into categories such as sales contracts, export contracts, purchase contracts, import contracts, construction contracts, subcontracting contracts, service contracts, lease contracts and labor contracts.
- Management of contracts covers monitoring and management of the entire business lifecycle.
- Supports multiple contract types, including quantity & amount contracts, unit price contracts, and total amount contracts, in order to meet different requirements for contract preparation & control.
- Enables monitoring of contract performance at each stage through implementation Doc according to the stages for confirmation of collection & payment and invoicing & shipment.
- For handling of quality assurance guarantee funds in stages, the module effectively solves problems of managing contract quality assurance guarantee funds, invoicing, and itemized statistical analysis.
- Builds a staged acceptance system for contract performance and realizes effective in-process control and post analysis of contracts.
- Supports the categorization of contracts into main contracts and sub-contracts and provides parameter controls for payment of sub-contracts in reference to main contracts.

## Key Features -02

- Provides a variety of alert methods such as contract validation alert, contract case closure alert, contract performance alert, and collection & payment alert, including early alert and overdue alert.
- Abundant contract query methods are available, for query of contract statistics, performance and change, tracking of detailed contract performance status, and analysis of detailed collection & payment.
- With its approval process for contract validation, contract change, contract performance and contract settlement, the module makes the performance of contracts even more rigorous and helps the enterprise to establish contract approval systems for various departments to provide evidences of and bases for contract approval.

# Intra -Supply Chain Management → Pre-sale Management

provides manufacturing enterprises with two tools; ATP analysis and simulated quotation, for order-taking analysis and product pre-development analysis.



## Key Features -01

### **ATP simulation**

ATP (available to promise) refers to the product quantity available for delivery in a specified period in the future according to current production scheduling and purchase status. ATP simulation is a pre-sale simulation of ATP product quantity that enables an enterprise to analyze the effect of intended sales on its whole business process.

- Multiple ATP simulation schemes are set.
- These schemes comprehensively consider & integrate the impact of the business and business implementation progress of each department on ATP and take MRP/MPS plan amount as future supply available to meet potential order demands.
- Expanding available quantity by date and detailed composition of the quantity are supported.

## Key Features -02

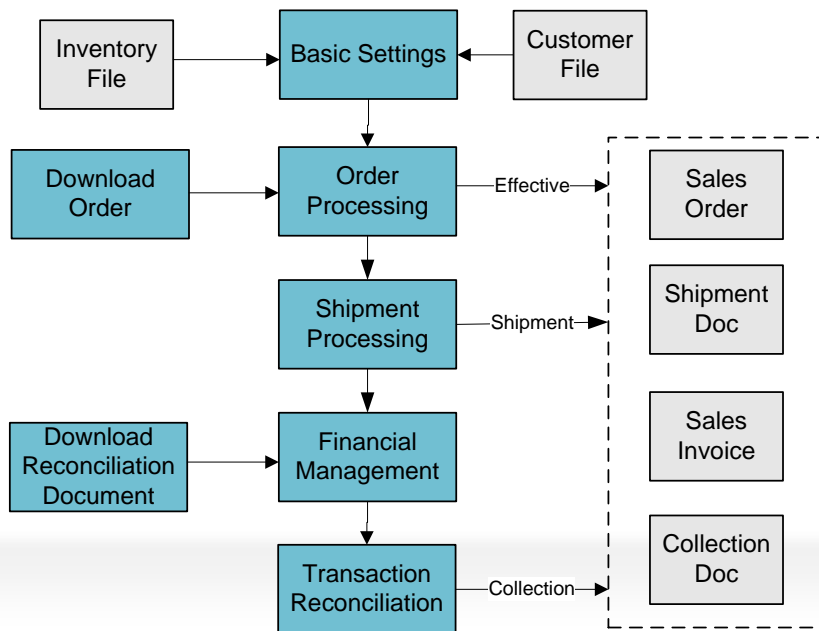
### **Simulated quotation**

The simulated quotation function is mainly for industrial enterprises. It enables pre-sale simulation of product quotation for analysis of cost-plus quotation.

- The multi-scheme based cost-plus quotation simulation module provides confirmation of cost price at the time of order-taking, design & production, and sample manufacturing. It provides analysis from multiple perspectives and with different methods.
- Multiple cost elements have been taken into full consideration for quotation simulation and other user-defined costs can be added manually.
- It allows the setting of multiple simulation schemes according to various cost element combinations.
- It is capable of implementing comparison & analysis of simulated costs and actual costs.

# Intra -Supply Chain Management → E-commerce Order Center

Consists of basic setting, order download, order processing, shipment processing, financial management, and collection. It can be integrated with foreground e-commerce platform and background U8 sales/inventory/collection & payment modules seamlessly for implementation of whole life cycle control of orders and integrated application of e-commerce business and U8 business system.





## Key Features

- **Basic setting:** for maintenance of shop files/commodity files/express delivery couriers/order approval exemption strategies.
- **Order management:** order information is downloaded to a local position via the ordering API provided by e-commerce service providers for generation of e-commerce orders.
- **Order shipment processing:** Orders where shipment is pending can be processed by batch. shipment doc/waybill/pick list can be printed; and the transfer of subsequent issue docs, invoices, and accounts receivable can be initiated.
- **Financial management:** supports financial review and invoicing of e-commerce orders. It also supports the importing of detailed collection & payment data from third party payment platforms such as Alipay, and reconciliation based on such data. The reconciliation results are used to generate collection doc for the account receivable module.
- **Query report:** supports queries of order collection and details & summary of data exchange.



## Key Features -01

- Provides flexible business process configurations which support setting business process in the system according to different sales types such as advance collection, credit sales and cash settlement in order to meet the control requirements for various business processing modes.
- Integrated with multiple extended management systems for extension of sales management functions. When integrated with the yonyou up -CRM system, it can realize total management of customer information, sales business opportunities, sales expenses, customer profiles and customer sales process.
- Supports the preparation of multi-dimensional comprehensive sales plans.
- Can implement multi-dimensional and multi-level pricing strategy and establish rigorous price control system.

## Key Features -02

### Management control system of proper rigorousness

- It is possible to set a customer's status as "sales allowed" or "sales restricted" to restrict sales representatives' sales and safeguard the valid matching of customer resources and transaction process.
- Mechanisms for inspection and control of available quantity: the sales management module provides two management modes for control and inspection of delivery quantity in order to integrate static and dynamic inventory management perfectly.
- Credit control system: It is possible to set credit period and credit line for customers, departments and sales representatives. It is also possible to set credit control measures for a specific customer.
- Account period control: For customers under credit period control, it is possible to select collection/payment agreement on shipment doc or invoice and calculate the due date according to the collection/payment agreement, and the system will then control the credit period according to the due date.
- Item reservation and release function assists sales representatives when they receive an urgent order by reserving a certain quantity of finished products to ensure timely delivery of goods for satisfying customer's basic demand.

## Key Features -03

### **Comprehensive management of order business**

- Management of Sales Advance Order: The system supports the processing of intended orders from customers. It is possible to carry out multi-level ATP simulated calculation.
- Whole process tracking of orders: for real-time acquisition of order-specific information of various departments' detailed plans and actual implementation status of the order.
- Multi-level analysis can be carried out on raw materials before production according to sales orders or the available quantity of items within multiple periods should be predicted according to manufacturing orders.
- Enables the user to track implementation of a sales order at each stage and the time spent on the order in each stage to gather data information about the order at each stage.
- The sales shipment function supports shipment of products according to orders or according to inventory. At the time of shipment, it is possible to check and control the available quantity and to re-acquire information such as current effective price and exchange rate.
- Sales invoices can be issued according to orders or shipment documents to different invoicing units of a company. It is possible to invoice according to cumulative issue quantity.

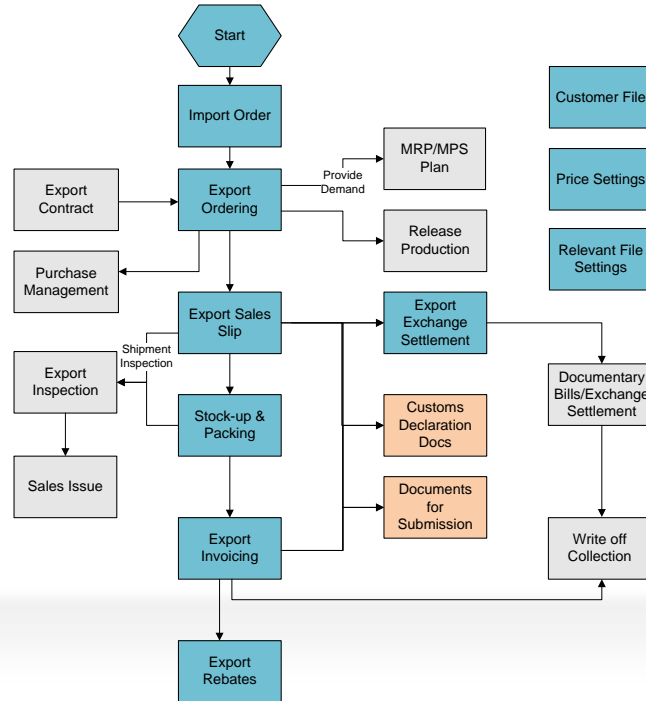
## Key Features -04

### Rich sales statistical analysis

- Sales implementation progress table: This table provides detailed information about shipment, issue, invoice, and collection, based on sales orders.
- Shipment statistics table: This table includes business data statistics of shipment, invoicing, and balance (shipment -invoicing) within a set period.
- A comprehensive sales statistics table is used to query the statistical data of an enterprise's orders, shipment, invoicing, issue and collection on the basis of inventory within a certain period.
- Sales analysis: This function supports the compilation of sales statistics according to orders, shipment documents or invoices. It also supports the presentation of data by month, week, or date.

# Intra -Supply Chain Management → Export Management

Be suitable for manufacturing enterprises that have an independent export license for processing trade, and commerce enterprises that have an independent license for international trade. It enables enterprises to manage export order taking, export process, letters of credit, and export expenses.



## Key Features

- Enables enterprises to implement whole process management of commodity export trade and create complete customer profile and transaction data.
- Supports the management of documents regarding collection of proceeds. Users can record detailed L/C information and generate/review/revise L/C, and can also collect TT/DP bills with this product.
- Offers detailed export expense management and enables users to carry out profit accounting and tracking of expense details for export bills in conjunction with export gain/loss.
- Enables user-defined business process management and can be used for whole process monitoring of processes.
- Provides abundant system control points for risk prevention, including: approval of export orders, control of customer credit line, credit period, and permission. It can be closely integrated with an alert platform for implementation of early alert prompts and automatic alert about exceptional events.
- When integrated with manufacturing and financial modules, it can provide information-based integration solutions for export-oriented processing enterprises.
- Provides abundant tools for cost estimation, analysis of gain/loss, and comprehensive statistical analysis of profitability and results of export business



## Key Features -02

### Management control system of proper rigorousness

- It is possible to set a customer's status as "sales allowed" or "sales restricted" to restrict sales representatives' sales and safeguard the valid matching of customer resources and transaction process.
- Mechanisms for inspection and control of available quantity: the sales management module provides two management modes for control and inspection of delivery quantity in order to integrate static and dynamic inventory management perfectly.
- Credit control system: It is possible to set credit period and credit line for customers, departments and sales representatives. It is also possible to set credit control measures for a specific customer.
- Account period control: For customers under credit period control, it is possible to select collection/payment agreement on shipment doc or invoice and calculate the due date according to the collection/payment agreement, and the system will then control the credit period according to the due date.
- Item reservation and release function assists sales representatives when they receive an urgent order by reserving a certain quantity of finished products to ensure timely delivery of goods for satisfying customer's basic demand.

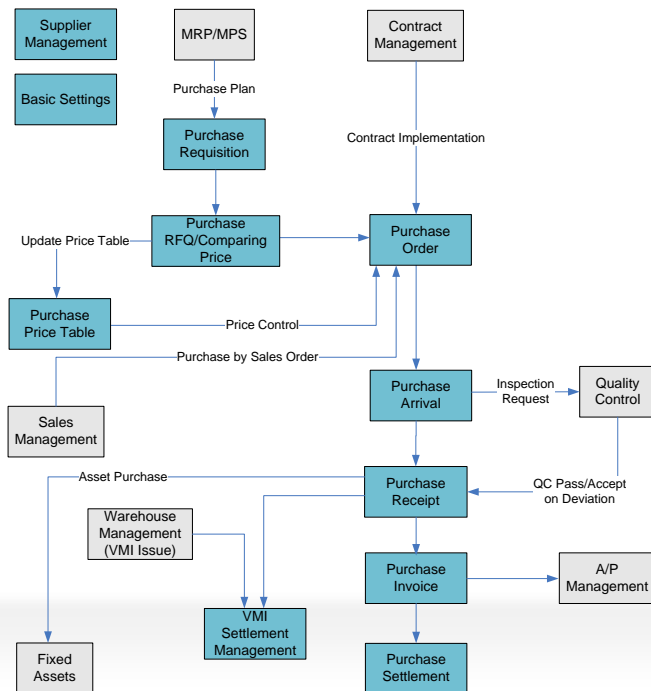
## Key Features -03

### **Comprehensive management of order business**

- Management of Sales Advance Order: The system supports the processing of intended orders from customers. It is possible to carry out multi-level ATP simulated calculation.
- Whole process tracking of orders: for real-time acquisition of order-specific information of various departments' detailed plans and actual implementation status of the order.
- Multi-level analysis can be carried out on raw materials before production according to sales orders or the available quantity of items within multiple periods should be predicted according to manufacturing orders.
- Enables the user to track implementation of a sales order at each stage and the time spent on the order in each stage to gather data information about the order at each stage.
- The sales shipment function supports shipment of products according to orders or according to inventory. At the time of shipment, it is possible to check and control the available quantity and to re-acquire information such as current effective price and exchange rate.
- Sales invoices can be issued according to orders or shipment documents to different invoicing units of a company. It is possible to invoice according to cumulative issue quantity.

# Intra -Supply Chain Management → Purchase Management

Covers the whole process of managing purchase business in purchase requisition, price inquiry, ordering, arrival, receipt, invoicing, and purchase settlement. It supports multiple business types such as ordinary purchase, VMI purchase, fixed asset purchase, drop shipment purchase.



## Key Features -01

- Provides flexible business process configurations for implementation of appropriate purchase process control to help customers meet different control and processing requirements for the purchase of labor protection products, raw materials, and office supplies.
- Enables users to create/approve supplier profiles and manage supplier qualifications. It also supports supplier access control, supplier price management, supplier quota management, supplier price inquiry, and comparison of supplier quotations for control and restriction of supplier business. The system offers analyses of supply price, quality, progress, and satisfaction for reasonable evaluation of suppliers and avoidance of purchase risk and improvement of supply accuracy.

## Key Features -02

### **Multi-dimensional, multi-level price strategies**

- Enables suppliers to fix a price according to different free items and allows progressive pricing and setting of price effective period.
- Supports manual pricing, automatic valuation based on previous transaction prices, and valuation according to a price list. It also supports revaluation of documents, single line valuation, and valuation based on total quantities of an order.
- Rigorous approval can be conducted on the whole process of price setting, adjustment, and removal by means of a Price Adjustment Sheet.

## Key Features -03

### **Comprehensive management of order business**

- Provides modules such as purchase price inquiry and price comparison for choosing suppliers of spare parts and critical parts and controlling purchase cost.
- Supports centralized management of purchase requisition for centralized control over purchase from multiple sources. It takes into consideration both the matching of production & sales and effective inventory planning.
- Multiple instructions & documents such as purchase plan document, ROP plan, purchase requisition, sales order, and production document guarantee that the purchase process will be carried out in strict accordance with relevant requirements
- Supports VMI consignment purchase mode for supportive industries. The entire consignment purchase process including material purchase, material consumption, material inventory, accounts pending, reconciliation, and payment is implemented by means of VMI.
- Provides effective alert mechanisms in terms of quantity and schedule control.
- Can be subject to budget system control, especially in the purchase of fixed assets, where the purchase process is strictly subject to project budget control from purchase requisition to invoicing.

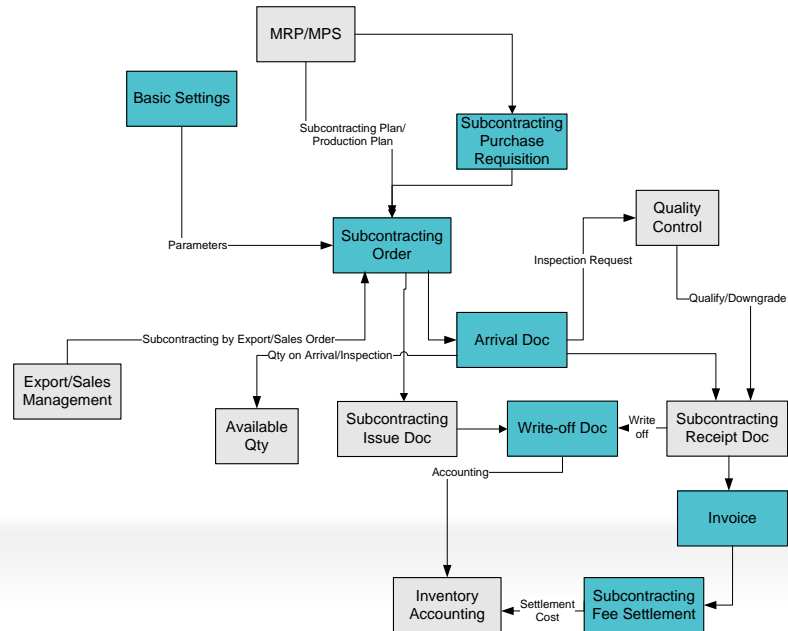
## Key Features -04

**aims to help enterprises control their overall item inventory costs by reducing purchase costs and defective items and by improving their purchase process to increase purchase efficiency.**

- **Purchase process control:** With the help of Purchase Order Execution Status Table, it is possible to track the execution status of a purchase order from purchase requisition to receipt and invoicing. In addition. The Purchase Order Progress Table reflects more details of the execution status at various stages to facilitate the purchase manager's supervision of the entire purchase process.
- **Purchase Comprehensive Statistical Analysis:** Various tables of purchase and order statistics effectively and comprehensively reflect the status of purchase and facilitate purchase managers' understanding of overall business status.

# Intra -Supply Chain Management → Subcontracting Management

Implements process management on subcontracted operations at appropriate costs/timing/quality/quantity. It also enables management of subcontractors regarding subcontracting items and preparation of the outsourcing plan by means of process management at appropriate costs/timing/quality/quantity. also covers management of issue subcontracting items, and return of remaining materials.





## Key Features -01

### Supplier Management

- Both subcontract and purchase support the creation/approval of supplier profiles and management of supplier qualifications. Both supplier access control and supplier price management gather a series of analyses such as supplier price analysis, supply quality analysis and supply status analysis for the evaluation & analysis of suppliers and quota management. Comprehensive evaluation of suppliers enables reasonable selection of suppliers, avoidance of purchase risks and improvement of supply accuracy.

## Key Features -02

### Accounting Period Management

- The subcontracting management module supports invoice opening account, the open account date can be fixed open account date(s), business date (document date) and monthly settlement date. The due date can be calculated based on open account date and accounting period, or simply be assigned a fixed collection date.

## Key Features -03

### Process Control

- The operation mode for item processing can be flexibly determined by generating purchase requisitions/subcontracting orders in batch according to sales exports or subcontracting plans, or by transferring a production plan to a subcontractor to initiate the subcontracting business.
- Provides a function for subcontracting order component maintenance, which enables the material keeper to adjust subcontracted materials or alternate materials according to the needs for subcontract implementation.
- The module can be used in combination with the inventory module to realize the receipt/issue and warehousing of subcontracted materials and subcontracted finished products exactly according to orders. It helps the user to improve control of supplied materials and collect real-time performance feedback about subcontractors.
- The accounting of recovered and issued write-off items provides information on the detailed consumption/recovery of individual items to determine suppliers' material consumption status. It supports item write-off by orders or by suppliers. Flexibility of write-off and versatility of system application can be improved by material consumption write-off by issue doc or by balance adjustment.

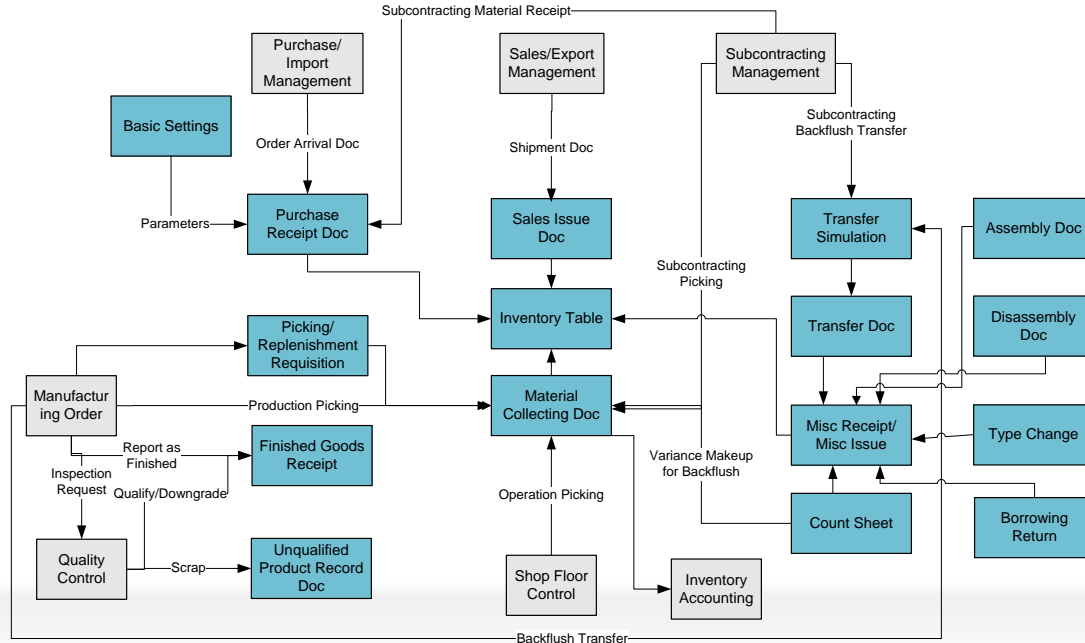
## Key Features -04

**Cut subcontracting costs, control the loss of outsourced items, and improve supply efficiency by improving routine processes.**

- **Subcontracting process control:** supports the use of a subcontracting implementation status table, which enables the user to track the subcontracting process from purchase requisition to material receipt and invoicing and reflects the implementation status of purchase at each phase. In addition, the subcontract progress table reflects more details of the execution time and status of subcontracting at each phase to facilitate the department manager's supervision of the entire subcontracting process.
- **Subcontracting analysis:** Various analyses of factors including shortage, consumption and consumption variance of subcontracting materials are available to enable analysis of material consumption from multiple perspectives. It is also possible to analyze subcontractors' item balance by means of the Subcontracting Item Balance Table for reconciliation of material consumption and balance with suppliers.

# Intra -Supply Chain Management → Inventory Management

Provides alert mechanisms on inventory shortage, overstock and safety stock, so when used in conjunction with BI decision-making, it can provide the basis for an enterprises' departments to make the appropriate decisions.



## Key Features -01

**Inventory business: The product provides multiple comprehensive inventory functions which support multiple item receipt/issue operations and warehouse management.**

- Implements all routine material receipt/issue operations and finished product receipt/issue operations. It supports the receipt of materials purchased to order, VMI consignment receipt, production receipt, QC receipt, and manual receipt operations.
- For enterprises adopting ATO, MTO operation modes, the system has reserved order-oriented inventory LP wares and PE wares to guarantee accurate use, avoid misappropriation, and release items.
- Management of ROP inventory plan: The preparation of inventory plans for low value consumables and labor protection articles is implemented to enable the purchase department to purchase in a timely manner.
- Management by barcodes: Data for warehousing operations, such as receipt, issue, and counting, can be collected by scanning barcodes, which helps improve accuracy of inventory and operation efficiency of enterprises.
- Special warehousing operations available include counting, transfer, inventory type change, assembly & disassembly and return of borrowed items.

## Key Features -02

**Inventory control: Functions available include management of item status, storage quantity, item batch, batch file, item serial number, location, shelf-life, and unqualified products.**

- Inventory control and inventory check: These functions are provided to meet the requirements for issue management and inventory check.
- Fine warehouse control: Management of various warehouses is implemented by on-site warehouse, consignment warehouse, regular warehouse and asset warehouse.
- Batch management: Management of items by batch is implemented. Shelf-life control: Shelf-life control of items is implemented. When used in conjunction with batch management, this function can monitor the expiration date of items and provide alert for expired inventory.
- Free item management: Management of descriptions of the fine characteristics of items for accounting free items and structural free items is implemented.
- Receipt for tracked issue: This function enables the tracking of issue for acquisition of inventory quality and supplier information. It can meet the requirements for business pegging.
- Serial number management: This feature enables the user to keep a record of receipt/issue covering all business points including sales shipment, purchase receipt, production order placement, after-sale service, SKU service and the field of inventory business.

## Key Features -03

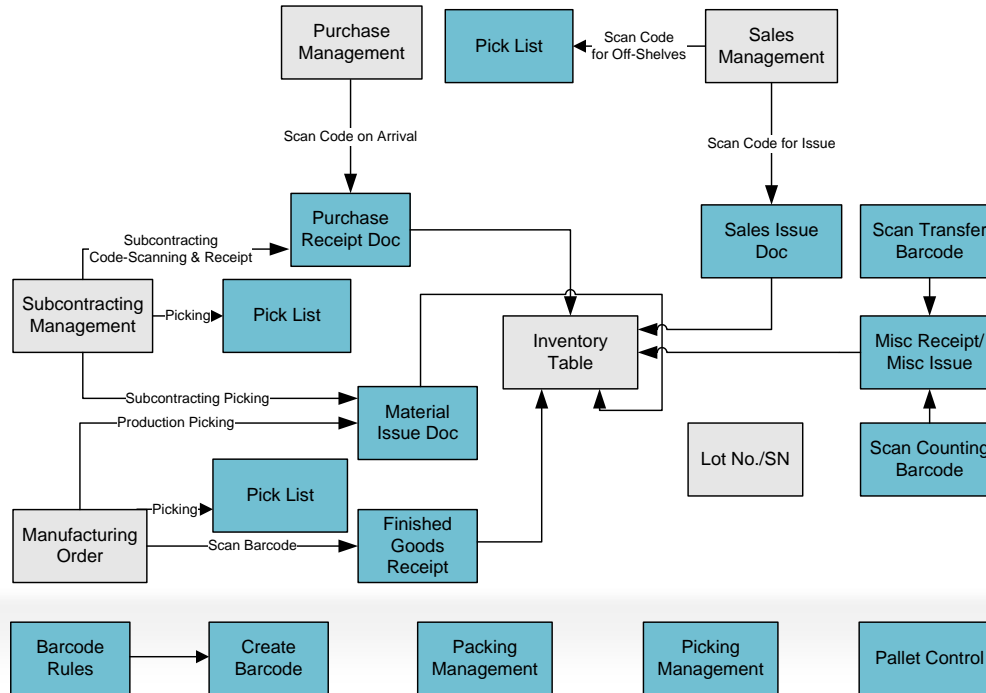
**Inventory analysis: The system provides a variety of inventory analysis tools for the user to process query, analysis and decision.**

- Item inventory analysis: The system provides a variety of multi-dimension item inventory analysis tools including table of quantity on hand, receipt/issue summary table, inventory expectation, set analyses, item shortage and set expectation analysis.
- Storage state analysis: The system enables the analysis of inventory quality cycle control, obsolete stock, turn-over rate, material-consumption cycle, inventory fluctuation and under/over stock.
- Structural analysis of items: Analyses of inventory reports including batch items and serial number items alert and prompt analysis are available.
- Item pegging analysis: Business pegging and order tracking analysis are implemented to help enterprises acquire information on actual execution status of orders and execution phases. Quality pegging can assist enterprise managers to identify the source/destination of batch numbers, serial numbers and business instruction relation.



# Intra -Supply Chain Management → Barcode Management

Support the scanning of barcodes with multiple PC-based offline and wireless scanning terminals and offer different scanning solutions for different scanning environments to meet enterprises' management needs for barcode applications.



## Key Features -01

### Barcode generation

- Can distinguish resolution barcodes from master file barcodes and provide the appropriate processing method .
- Supports fixed length barcodes and non-fixed length barcodes, to meet enterprises' barcode application requirements .
- Comes with a label designer which can conveniently design common types of barcode labels and content for barcode applications .
- Can generate barcode master files according to the sources of purchase orders and manufacturing orders.
- It is possible to manually maintain the barcode master files directly with this module.
- Supports the import of barcode master files.

## Key Features -02

### Barcode scanning

- The wireless version of this product supports the configuration of barcode-based business processes and the configuration of application such as pallets.
- Multiple hardware applications are supported: For wireless/online/offline (batch processing) applications, this module features simple and convenient interface operations. It enables the user to directly generate U8 documents by scanning, which not only decreases the workload of warehouse but also lowers the module's requirements on users' level of computer skills.
- Supports the scanning of document barcodes and inventory barcodes.
- Supports acceptance check by scanning and can be used for effective control over receipt/issue processes because of its ability.
- Since it supports generation of documents by scanning, it can meet enterprises' management requirements for fast entry of documents according to physical goods.
- Scanning of pallet is supported.
- Recording of detailed information of barcode scanning is also supported.

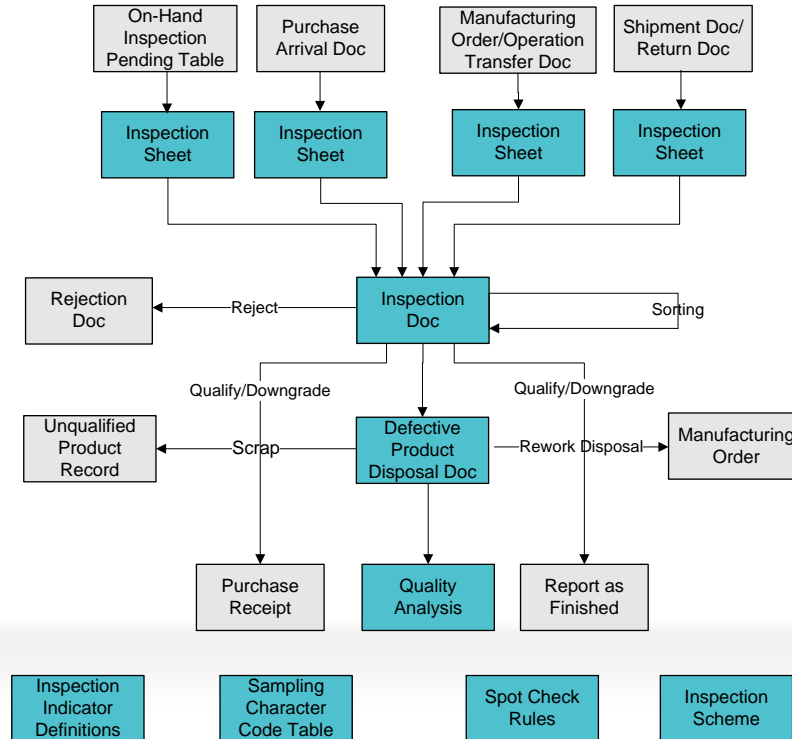
## Key Features -03

### Picking and packing

- Picking sheets can be generated according to sales shipment docs, manufacturing orders, and subcontracting orders.
- Location allocation for picking sheets is supported
- Confirmation of picking sheet by barcode scanning is also supported.
- The module can generate packing lists that support shipment packing, production packing and in-warehouse packing
- Provides a scanning function for associated documents, which enables it to record barcode association.

# Intra -Supply Chain Management → Quality Management

In line with the principles of ISO9000/QS9000 philosophy and following Deming circle, it can satisfactorily implement whole process management of quality inspection, quality control, quality analysis and quality evaluation.



## Key Features -01

### Whole process quality inspection system

- Supports quality inspection throughout the whole process of item purchase, within-inventory storage, completion, processing, sales, return, and retention. It also supports judging inspection results and coping with defective processes and items.
- Supports both overall inspection and spot checks. For spot checks, the system supports both destructive and non-destructive checking. It supports four sampling strategies; fixed sample size sampling, proportional sampling, sampling according to China's national standards (GB), and custom sampling.
- Supports two quality inspection modes, fast inspection and precise inspection. The system can calculate sample size automatically according to quantity reported for inspection and can judge inspection results automatically based on the inspection results of the whole batch (or inspection results of indicators/inspection results of samples).
- Supports a full set of quality inspection plans for both discrete manufacturing and process manufacturing in chemical industry. The system is embedded with a custom sampling standard ( $c=0$ ) for automotive industry.

## Key Features -02

### **Flexible process control**

- Inspection operation methods which are regulated without sacrificing flexibility: The system supports multiple inspections for one request. It also supports fast inspection platforms. It also supports consolidated inspection requests for incoming materials to reduce workload. Quantity errors between inspection results and the counting results of loose items are coped with flexibly according to the relationship between quantity and source documents determined by inspection. The logistics department is allowed to determine the final quantity.
- Supports multiple processing methods for defective products. It not only determines batch quality but also offers options for return/reject/picking/rework/downgrade of defective products. Various analyses and graphic statistics are available for defective products. In the system, users are guided through the process for implementation of standardized quality control and processing.

## Key Features -03

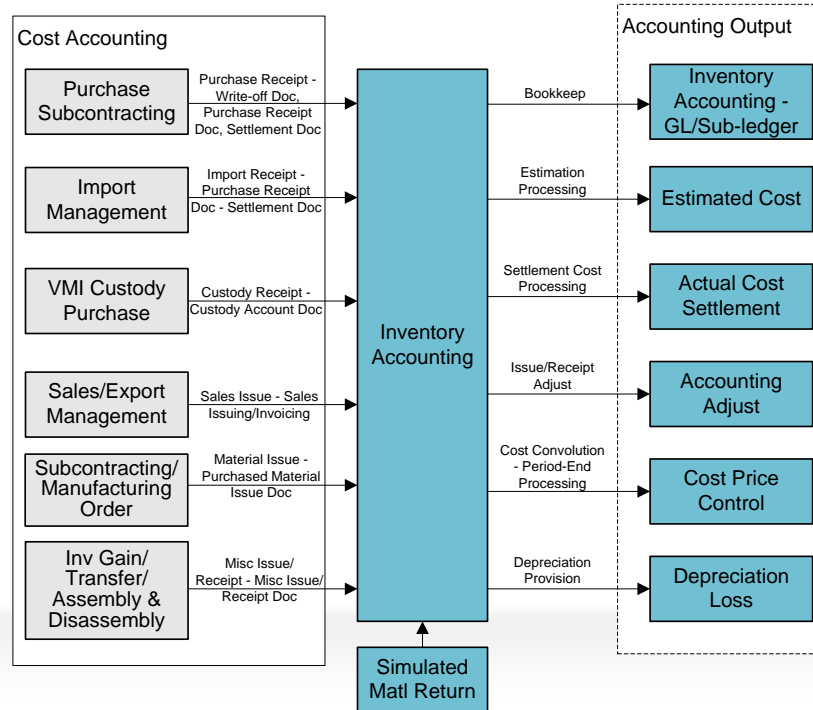
### **Comprehensive quality report system**

- The system yields qualification rates, defect status, and journals & reports for all process inspections.
- It enables enterprises to implement quality pegging of all traceable items throughout the system and helps enterprises to identify various problems relating to cross-boundary dumping, raw materials' quality, purchase item sources, sales destination, production quality accidents, and after-sales service for timely correction and early prevention.
- Furthermore, the system also provides various controls and reports on products from suppliers covering the phases of material purchase, completion, issue and return, including quality defects control reports in the phases of purchase, import, sales, export, subcontracting and production.



# Intra -Supply Chain Management → Inventory Accounting

Be mainly for the accounting of the receipt, issue and inventory of the enterprise's stocks to acquire inventory consumption information and allocate all inventory costs to relevant cost items and cost objects for the enterprise's cost accounting.



## Key Features -01

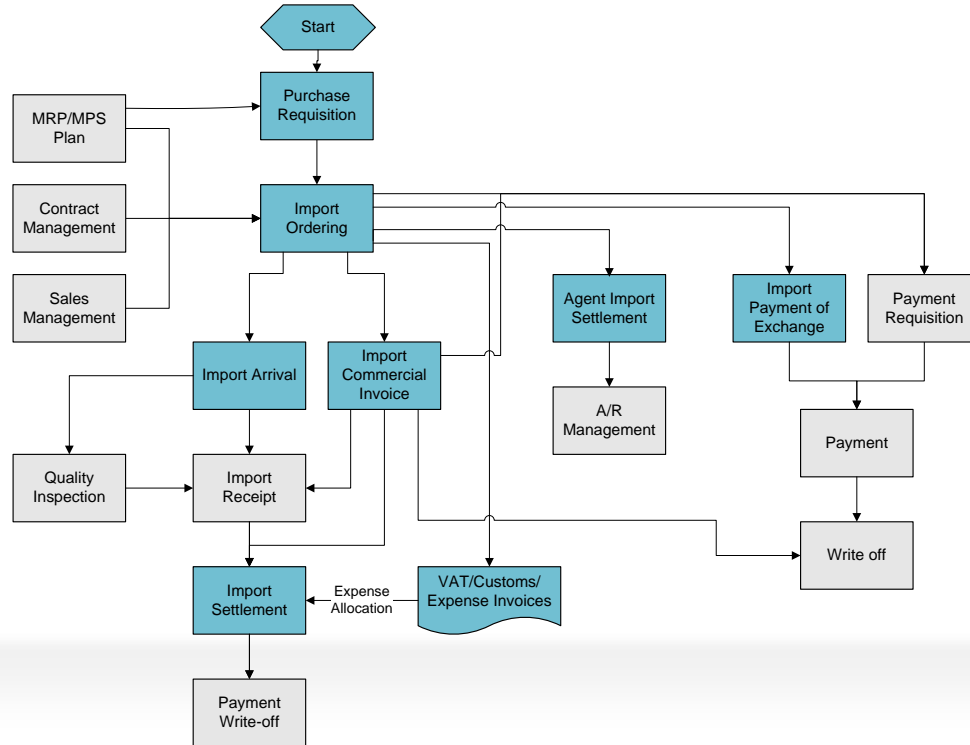
- Be a cost accounting tools that suit various business scenarios: A number of cost price controls are available, including monthly average, moving average, FIFO, individual pricing and planned price accounting. The system provides 3 accounting methods; by warehouse, by department, and by inventory. It also supports regular purchase, subcontracting, consignment purchase, purchase estimation, regular sales, recording the issued goods sub-ledger on installment collection, recording issued goods sub-ledger on delegation collection, simulated material return, drop shipment sales and other business cost accounting.
- Supports estimation of receipt costs: The system provides three methods for estimation of receipt cost; Back Offset at Beginning of Month, Back Offset upon Receiving Invoice and Make up Variance upon Receipt Doc.
- Management of simulated material return: This function exempts a shop that wants to use a material that has been collected but not used up at the end of a month in the next month from the material return procedures by creating a simulated material return form for cost accounting.

## Key Features -02

- Flexible and timely business adjustment: This function makes adjustment to documents that have been book kept in current month and makes entry to sub ledgers or the variance account book/the price difference account by means of Issue Adjustment Doc/Receipt Adjustment Doc/System Adjustment Doc.
- Finished goods cost allocation: This function enables batch cost allocation to finished goods receipt doc by inventory or by inventory category at any time. It also supports the acquisition of unit cost of finished goods from the “cost accounting system” for incompleteness of receipt documents. When used in conjunction with the cost management system, this function enables integrated multi-level item cost allocation & convolution for automatic bookkeeping and accounting.
- Provides the accrual of depreciation provision for inventory.

# Intra -Supply Chain Management → Import Management

Be suitable for manufacturing enterprises that have an independent import license for processing trade, and for commerce enterprises that have an independent license for international trade.



## Key Features -01

### **Self-operated import business**

- Enables enterprises to implement whole process management of goods import.
- Supports the management of exchange payment doc and registration of L/C information in details for opening management of letters of credit.
- Can generate import invoices and duty invoices and take them as the basis for settlement of material costs and estimation of materials.
- Provides abundant system control points for risk prevention and can be tightly integrated with the alert platform for advance alerts and automatic alarms related to exceptional events.
- Enables enterprises to implement agent import order-centered comprehensive business management, starting with the signing of agent agreement.
- Allocates the amount of goods payment, freights and duties incurred by import agent to the agent settlement sheet.
- Import orders and agent settlement sheets can be printed as docs or Microsoft Word documents.
- It provides detailed agent business report for monitoring agent business process at each phase.

## Key Features -02

### Processing trade business

- Can integrates import/export, manufacturing, and finance modules to provide a complete integrated information-based solution for processing-based export enterprises.
- When receiving an order, export departments can confirm the processing trade contract signed with the customer by means of export order.
- Custom codes are served as trails of business processing that links production, picking, and finished product receipt.
- Provides customs manual to facilitate the query of remaining amount/consumed amount and current inventory balance of import/export goods.
- Documentation, collection, custom declaration, L/C opening functions is all provided.
- Enables enterprises to implement purchase, consumption and export of items on custom manual by means of incoming item process and helps enterprises to register and write-off transactions according to custom manual and contracts.
- Supports the creation/approval/carry-forward of manual and enables manual supervision of various logistics business via bonded warehouse and bonded business classification to ensure enterprises' bonded business meets customs regulations.

# Contents

01

About yonyou up

02

Financial Management

03

Intra -Supply Chain Management

04

Manufacturing Management

05

HR Management

06

CRM

07

Chain-retail Management &O2O

08

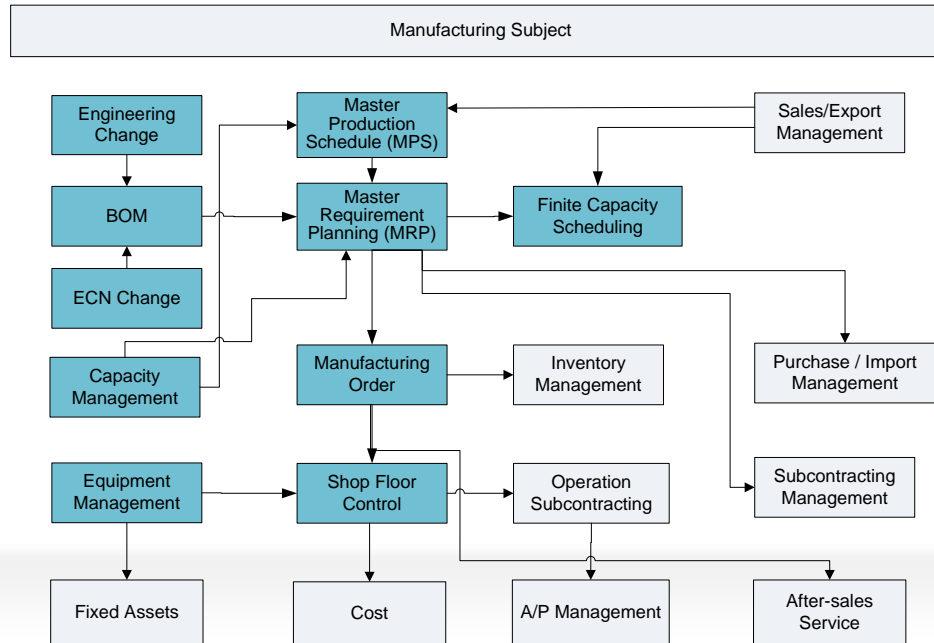
Business Intelligence

09

Mobile Application

# Solution Map

Consists of such modules as BOM, master production schedule (MPS), demand planning (MRP), finite capacity scheduling, production capacity management, manufacturing order, shop floor management, engineering change, equipment management, and handling of influencing factors associated with engineering change.





# Value Proposition

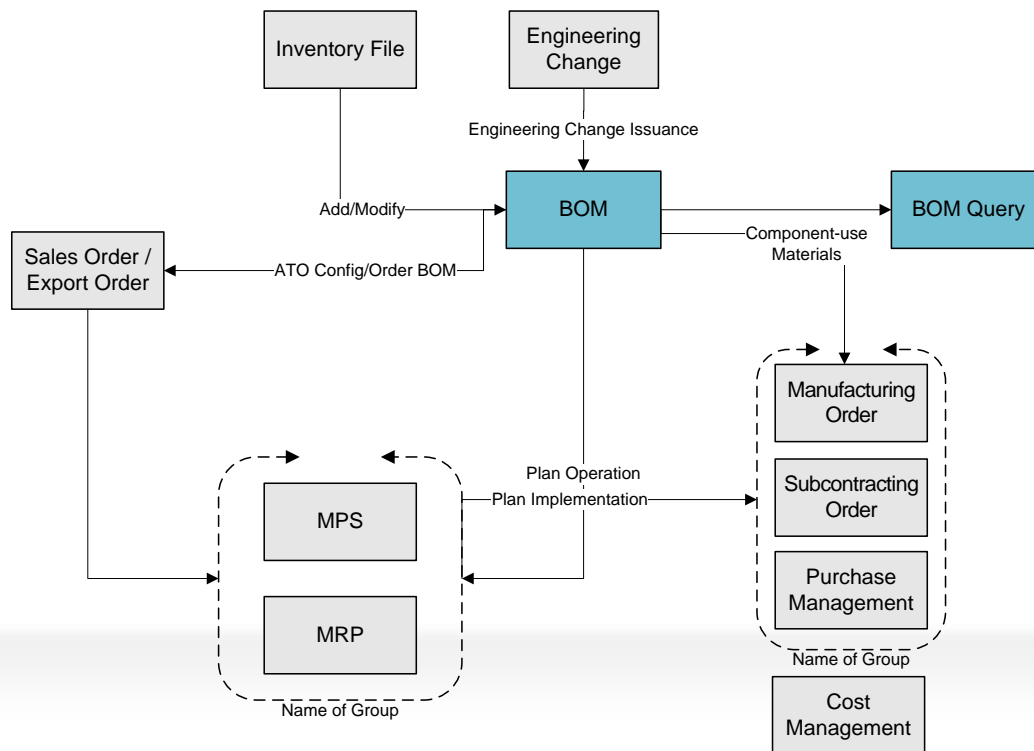
- **Aim to improve an enterprise's production adaptability** and enhance its pre-scheduling production capacity balance.
- **Reducing the complexity of production cost** and production management.
- **Improving a factory's production flexibility.**
- Speeding up production turnover rate.

# Main Features

- Supports make to stock, assemble to order, and make to order.
- Supports discrete small batch production and mass repetitive manufacturing of multiple varieties of products.
- Supports capacity balancing and finite capacity scheduling of plan at various levels.
- Enables enterprises to establish a standardized basic engineering data management system

# Manufacturing Management → BOM

Be a basic module and a core file in the manufacturing field; it supports multiple BOM modes: plan item, standard BOM, ATO non-model, model category, option class, etc.



## Key Features -01

### **Multiple BOM application characteristics are supported**

- Multiple BOM modes are supported: plan items, standard BOM, ATO non-model, model category, option class.
- Multiple BOM types are supported: master BOM, alternate BOM, common BOM, order BOM, subcontracting BOM and customer BOM,
- Multi-version BOM is supported: The user can set multiple versions of main BOMs and alternate BOMs and the effective date of each version.
- Structured and non-structured free items are supported; items are labeled jointly by “inventory + structured free item”; Co-products/by-products is supported.
- Multiple supply types are supported: The system provides multiple supply types: picking, receipt backflush, operation backflush, phantom and direct supply.
- Both picking application and direct picking methods are supported.
- Item consumption management: In BOM, the amount of components can be expressed precisely in the form of numerator/denominator; product loss rate and component loss rate are supported; batch loss rate is supported.

## Key Features -02

### **BOM processing is supported**

- The creating and processing of BOM are supported: Three statuses, “new, approved, deactivated”, are available for effective control of BOM reference by various business.
- Common BOM is provided: The system can create a single common BOM to be shared by some products.
- Multiple methods available for fast creation of BOM: BOM copy function can be used to rapidly create new BOM.
- Batch processing is supported: including batch modification, deletion, addition, alternating of material, and replacement.

## Key Features -03

### **Multiple BOM queries are supported**

- BOM variance comparison table: including comparison of major BOMs and alternate BOMs and comparison between major BOMs and alternate BOMs.
- Old items can conveniently be replaced by new items: The range of replacement can be determined by time or by BOM category.
- Multiple presentation methods available for BOM: Multi-level and single level, forward and backward queries.
- Maintenance of BOM is supported when multi-level BOM query is underway
- Full level item costs of a product can be queried in terms of various item price formats, such as latest price, minimum price and cost price. Relevant price information of alternate items can be included.
- BOM doc template data permission is supported.
- .

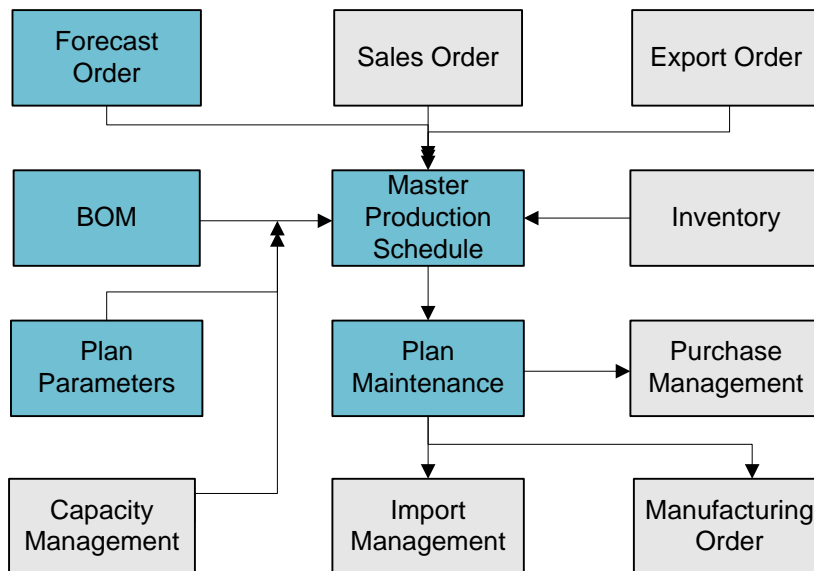
## Key Features -04

### **PDM interface**

- PDM data interface for transfer of data from inventory file, BOM, and routing to the U8 system can be implemented
- A standard data exchange interface is supplied to PDM software providers and all PDM software providers must follow the PDM interface specification for development of data interfaces.
- The system has two data transfer modes; synchronous and asynchronous.
- The synchronous mode requires no manual operation – data are pushed into the U8 system by the PDM system.
- Asynchronous mode supports modification of data before it is pushed into the U8 system and the modified data can be imported to the U8 system.

# Manufacturing Management → Master Production Schedule

Mainly used to define expected production plans of critical items.





## Key Features -01

### **MPS demand source can be set flexibly**

- MPS demand can be from demand forecast, or customer orders, or a flexible combination of demand forecast and customer orders. It supports multiple modes, including inventory production and order taking production.
- Multi-version product demand forecast data are available: Any version of the demand forecast can be designated as the source of MPS demand.
- Unreasonable urgent orders are limited to guarantee on-time delivery as far as possible: A freeze period can be set and if the start date of any manufacturing order or subcontracting order falls into the freeze period, the system will prompt “conflicts”.
- Generation of sales orders in reference to forecast order and automatic generation of demand category are supported.

## Key Features -02

### **Supporting repetitive manufacturing plan**

- Supporting repetitive manufacturing plan: the system can automatically generate a recommended repetitive manufacturing plan for MPS parts.
- A plan period can be set for user-defined repetitive plan by time bucket setting

## Key Features -03

### Plan maintenance and processing

- The query of supply/demand data of MPS and the calculation of MPS by items/sales orders/estimated orders are supported.
- Supporting MPS plan maintenance function: for maintenance of planned supply automatically generated by MPS or by manual operation.
- The query of supply/demand data of MPS and the calculation of MPS by items/sales orders/estimated orders are supported.
- Existing planned orders can be displayed as Gantt charts. Those with permission to modify may drag the Gantt charts to modify the start/completion date of the planned order. This makes the display of production plan more intuitive and supports decision-making.
- The maintenance of both forecast expansion pattern and planned expansion pattern is supported.

## Key Features -04

### **Supporting multiple planned application characteristics**

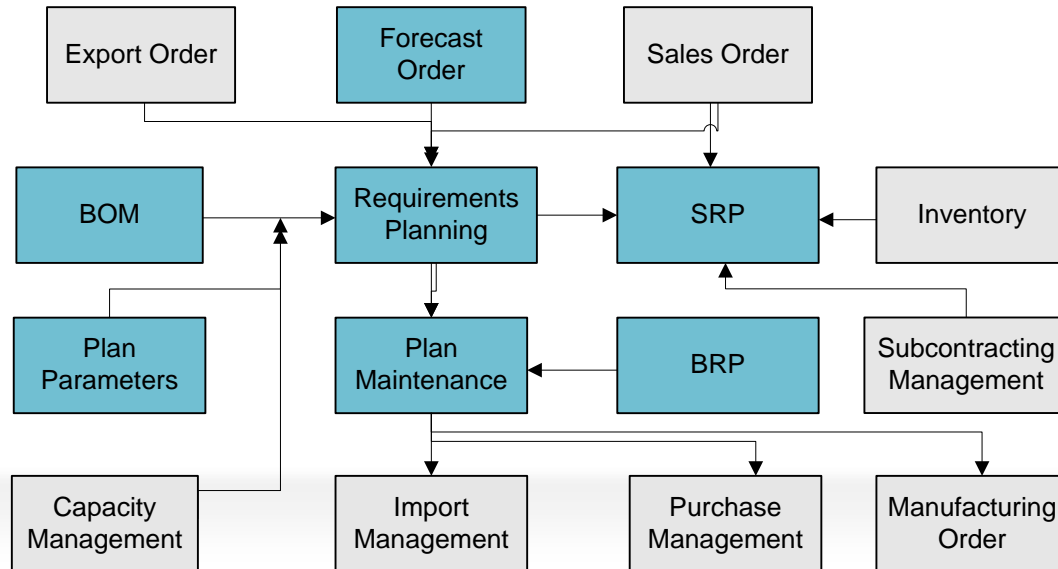
- Multi-version plan is supported and selection by plan code has been added as a new feature; i.e. MPS supports multiple MPS plan simulated planning to provide managers with more information.
- Supports the selection of supply/demand elements for MPS calculation, i.e. when carrying out MPS calculation, you can choose whether or not to lock “manufacturing orders, subcontract orders, purchase requisition, purchase orders, import orders and planned orders ” that are under review and whether or not to take safety stock of inventory and/or replenishment requisition into consideration
- Supports component offset
- Supports locking & confirmation of plans.
- Supports the forecast offset of sales orders of multiple different products with a planned item.
- Supports dynamic safety stock.

## Key Features -05

- Supports scheduled execution on set date and time.
- Supports the release of MPS plan for production, purchase (import) and subcontracting.
- Supports processing of detailed table of orders with which it is possible to query exceptions in order information.

# Manufacturing Management → Demand Planning

Demand planning (MRP) system is for the calculation of demand quantities and date of purchase parts, subcontracted parts and self-made parts according to the demand of customer orders or estimated product orders and MPS by expanding BOM for MRP parts, taking into consideration inventory on hand and orders not yet closed, for planned implementation of purchase management, subcontracting management and manufacturing order systems.



## Key Features -01

### Source of MRP demand can be set

- Independent sources of demand for MRP items at various time periods can be set by time buckets, whether these sources of demand are forecast demand, or customer orders, or a combination of forecast demand and customer orders.
- Multi-version product demand forecast data: Forecast demand of any version can be selected as a demand source.
- Supports the generation of sales orders in reference to forecast orders; supports automatic generation of demand category.
- Supports component forecast offset algorithm.

## Key Features -02

### **Supporting repetitive manufacturing plan: Repetitive plan can be customized by setting time bucket**

- Supporting repetitive manufacturing plan: the system can automatically generate a recommended repetitive manufacturing plan for MPS parts.
- A plan period can be set for user-defined repetitive plan by time bucket setting

### **Multiple planning strategies are provided**

- Supports acquisition of BRP specific orders based on BOM expansion; supports complete batch-to-batch production mode of manufacturing enterprises.
- Supports preparation of SRP plan



## Key Features -03

### Plan maintenance and processing

- Supports query of supply/demand data of MRP and the calculation of MRP by items/sales orders/estimated orders.
- Supports query of items for which no BOM has yet been established: verification before MRP expansion.
- Supports multi-version plan, and selection by plan code has been added; i.e. MRP supports multiple MRP plan simulated planning to provide managers with more information.
- Supports locking & confirmation of plans
- Existing planned orders can be displayed as Gantt charts. Those with permission to modify may drag the Gantt charts to modify the start/completion date of the planned order. This makes the display of production plan more intuitive and supports decision-making.
- Supports maintenance of both forecast expansion pattern and planned expansion pattern.

## Key Features -04

### **Supporting multiple planned application characteristics**

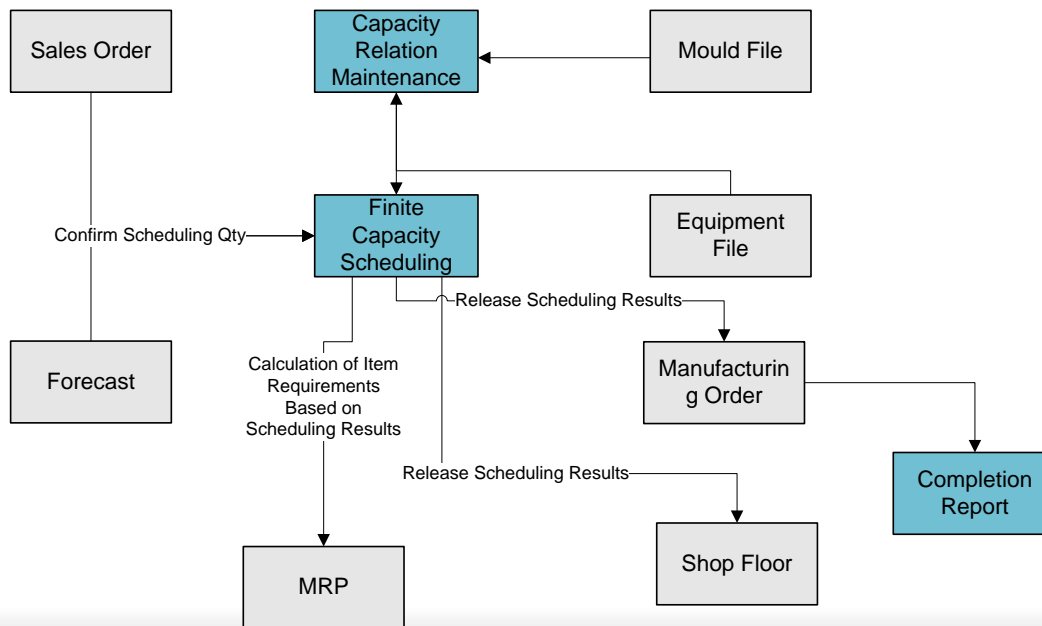
- Supports replacement materials.
- Supports the selection of supply/demand elements for MRP calculation: when carrying out MRP calculation.
- Supports component offset.
- Supports the forecast offset of sales orders of multiple different products with a planned item.
- Supports dynamic safety stock.
- Unreasonable urgent orders are limited to guarantee on-time delivery as far as possible: A freeze period can be set and if the start date of any manufacturing order or subcontracting order falls into the freeze period, the system will prompt “conflicts”.
- Critical product parts scheduling for guaranteed on time delivery ratio: Demand forecast of MRP items can be conducted at any level of BOM.
- Supports consolidated supply of items of fixed cycle batch and allows the supply date to be set as start date of period, end date of period, or date of first demand
- Supports multiple item tracking methods, including LP, PE and PE documentation, for effective management of tracking and planning of demand.

## Key Features -05

- Supports scheduled execution on set date and time
- Supports the release of MPS plan for production, purchase (import) and subcontracting
- Supports processing of detailed table of orders with which it is possible to query exceptions in order information

# Manufacturing Management → Finite Capacity Scheduling

In assembly-oriented production enterprises, the capacity of production line/equipment processing can be a constraint on delivery date commitment, production master schedule preparation and shop dispatch.



## Key Features -01

### **Scheduling for single bottleneck equipment**

- Enables enterprise planner to conduct plan simulations based on the enterprise's limited capacity and the unconfirmed demand information from the sales department to determine a practical delivery date.
- Enables the planner to conduct daily scheduling of production based on the enterprise's limited capacity for a specific delivery demand (sales order, estimated order and manufacturing order).
- In the case of urgent orders, the system enables the user to lock/adjust/recalculate prepared plans in order to meet the delivery date requirements for all orders.
- For unconfirmed orders from potentially important customers, the system can reserve, use, and release equipment and labor shift capacity in advance.
- Once a plan is prepared, the system can conveniently display all relevant resources demand (e.g. labor).
- Effective results of the master production schedule can directly be used as the basis for MRP calculation. The results of finite capacity scheduling can be used for releasing manufacturing order.
- The system enables report of work released by finite capacity scheduling and tracking of daily production progress and shipment.

## Key Features -02

### **Mould scheduling**

- Defining the capacity of mould products: The user can define the capacity of every item and mould in unit time.
- Defining mould files: The user can define the characteristics of every useable mould, its characteristics, and service life.
- Enables defining of mould & equipment relation and the matching of mould and equipment.
- Defining the relationship between moulds and product portfolios: The user can define the relationship between product portfolios and moulds that can shape multiple products at a time.
- Supports integrated scheduling of products based on mould restriction and equipment restriction.
- Other functions similar to those of single bottleneck equipment scheduling

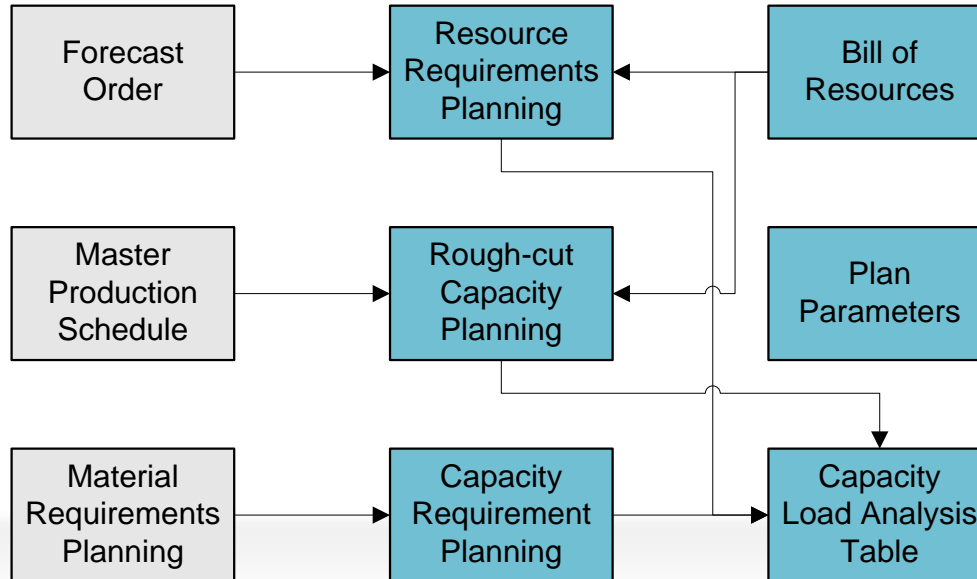
## Key Features -03

### **Multi-operation scheduling**

- Defines multiple operations and operation group for confirmation of tab category.
- Defines the relationship between operation and equipment.
- Sets transfer rhythms and transfer batch quantity between previous & next operations.
- Supports automatic scheduling and linkage modification of multiple operations.

# Manufacturing Management → Capacity Management

Can calculate resource capacity by work center, so as to ensure that an enterprise has sufficient production capacity to meet its production needs. It provides three levels of resource planning: Resource Requirements Planning (RRP), Rough Cut Capacity Planning (RCCP) and Capacity Requirements Planning (CRP).



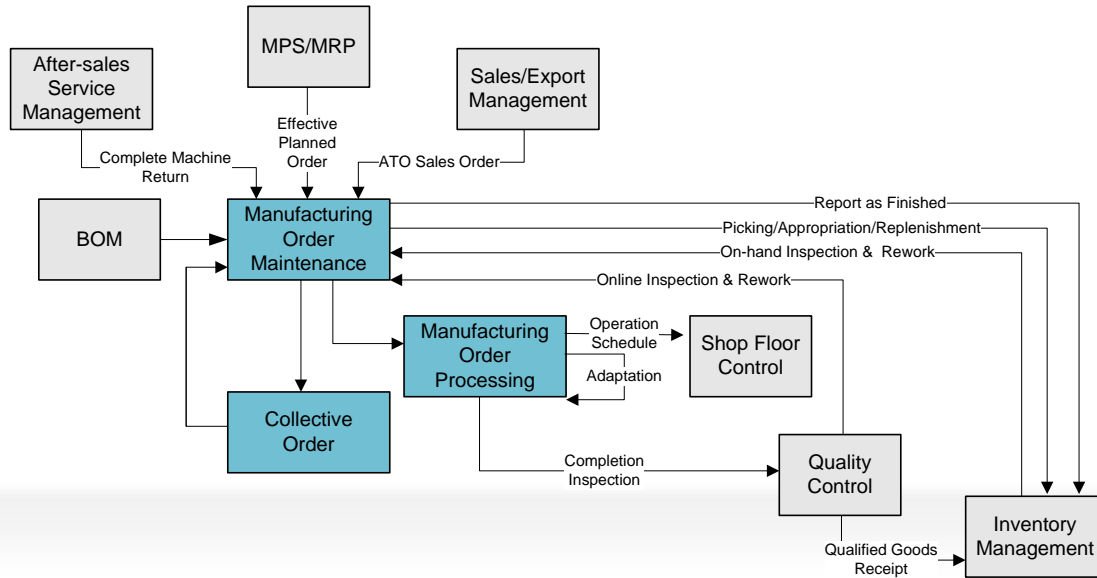


## Key Features

- Supports capacity balancing with MPS/MRP multi-planning: you can enter the specific MPS/MRP multi-planning codes that you want to be used in RCCP and CRP calculations.
- Supports transfer of routing to bill of resources: (1) Routing is automatically recorded in the bill of resources according to the BOM and process information. (2) The offset days of work center resources are calculated automatically
- Supports manufacturing orders with Unapproved, Locked and Approval status in the manufacturing order system, which is one of the requirement sources for CPR
- Provides query information on capacity and resource loading, and can conveniently display capacity load status in graph format
- Supports setting of resource overload/underload percentages used for exception management.

# Manufacturing Management → Manufacturing Order

Be a basic instruction file for shop floor production and a means of controlling production progress. The component information on a manufacturing order is used by production personnel to pick production materials and forms the basis for control. It is also used for the management of MO planning, locking, approval, closing, and material preparation, as well as the management of various business-related reporting and analysis operations,



## Key Features -01

- Supports the establishment of standard and non-standard manufacturing orders.

### **Supports multiple document generation methods and integrated use**

- Manufacturing orders can be generated manually by users or automatically generated from MPS/MRP/BRP calculation results.
- General assembly manufacturing orders can be created for configure-to-order products by sales order.
- Can be integrated with the Inventory Management System, with an optional setting to allow excess manufacturing order completion.
- Can be integrated with BOMs and the Inventory Management System to carry out replacement issue on the material issue document, according to the replacement relationship defined by the BOM.
- Can be integrated with the Quality System to generate product stock-in inspection lot documents by manufacturing order.
- Supports collective order maintenance: possible to query and maintain product/component information in a set of maintenance orders.
- Supports conversion of sales orders into manufacturing orders: sales orders for items with ATO attributes can be converted into manufacturing orders by selecting qualifying sales orders.

## Key Features -02

### **Supports multiple processing of manufacturing orders**

- Possible to associate product routings, and specify the Used Material Quantity and Date Required of manufacturing order components by operation.
- Option to set component usage by manufacturing order as Fixed Usage or Variable Usage.
- Option to define whether components on the used materials list of a manufacturing order are by-products.
- Option to specify the picking warehouse for components in the used materials list of a manufacturing order.
- Option to temporarily modify the Component Used Material data of a manufacturing order.
- Provides material shortage simulation function for each manufacturing order, in order to keep track of material shortages and prevent resulting downtime.
- Provides MO auto-closing function and option to manually force close and restore of manufacturing orders.
- The MO Batch Processing user interface has a function that enables batch replacement of manufacturing order components, according to the item replacement relationship of the MRP operation.
- Supports production by serial number order placement.

## Key Features -03

### **Supports multiple business processing**

- Supports moving of MO items, picked items can be moved between manufacturing orders.
- Supports adaptation of manufacturing orders, adaptation and processing of MOs that have begun production processing, and adaptation of MOs with serial number; production business processes are supported for MOs that are subject to adaptation.
- Supports online rework processing, possibility to generate rework manufacturing orders by quality inspection condition, and to make inspection requests by manufacturing order.
- Supports in-stock reworking, possibility to generate rework manufacturing orders by in-stock quality inspection condition.
- Supports service rework processing and service document rework processing.
- Supports new product trial manufacture business processing.
- Supports replenishment requests, with the possibility to record the scrap quantity and reason of components.

## Key Features -04

### **Multi-angle query and analysis**

- Provides comparative analysis data for manufacturing order components: standard quantity in usage/cost and actual usage/cost.
- Provides MO alert and alarm information that allows production personnel to effectively control the execution and exception status of manufacturing orders.
- Provides MO change logs, which record the detailed change history of a manufacturing order and allow changes to be queried easily.
- Provides integrated querying of manufacturing orders, with the possibility to query items and operation implementation status.



## Key Features -01

### **Supports generation and maintenance of operation schedules**

- Manufacturing order operation scheduling supports forward and backward scheduling; rescheduling supports whole document and midpoint scheduling.
- The routings of manufacturing orders transferred into the shop floor management system can be modified individually. Routing: for each operation, you can specify a work center in order to determine the resources, the operation schedule, the inspection material, the resource requirements and other data that can be used in the operation. You can also allocate production plans to an operation by shift, equipment, crew, or employee.
- Supports rescheduling of shop floor operation schedules
- Supports Gantt chart display and maintenance using drag method for shop floor operation schedules.
- Allows batch processing of operation data, including the following functions: batch adjustment or automatic rescheduling of manufacturing order operation schedules, and batch deletion of MO operation schedule information, MO transfer documents and MO hours records.
- Supports shop floor capacity checking, with the possibility to batch-check available capacity of MO operation schedules, and helps to execute finite capacity scheduling.



## Key Features -02

### **Flexible operation dispatch**

- Supports dispatch to shift, equipment, crew, and employee by operation schedule .
- Supports association of resources with equipment, and associations between personnel .
- Provides left-tree and right-table detail dispatch method, to facilitate user shortcut operations for dispatch to shift, equipment, crew, employee, and other work center resources.
- Provides dispatch lists that include Pending Dispatch, Dispatched, Future Orders and other information .
- Provides dispatch reference information, equipment load, and personnel load status .

## Key Features -03

### **Supports operation transfer**

- Supports the movement of items (products) within an MO operation and between operations using the operation transfer document method, with the possibility to determine whether or not to carry out excess completion controls based on the system options.
- Supports MO operation report points, backflush operations and charging points.
- Supports operation quality inspection originating from operation transfer documents.
- Supports operation reworking, with processing of rework business using the "Reject" process status or non-standard manufacturing order methods.

## Key Features -04

### **Supports the generation and maintenance of Hours Records**

- An MO Hours Record can report all shifts, employees or equipment for the MO operation or the actual completed quantity and hours of equipment, in summary or detailed format.
- Supports manual entry and automatic generation of hours records: automatic batch generation of MO hours records from MO operation transfer document.

### **Supports refined management of operations**

- Supports online barcodes: operation information, dispatch order and transfer card support barcode printing; generation of documents by barcode scanning is supported for confirmation and transfer card completion documents.
- Supports down-to-the-minute operation management: down-to-the-minute operation planning and scheduling, process transfer, counting and recording of working hours.
- Supports Operation Secondary Unit Of Measurement.

## Key Features -05

### **Supports multiple confirmation modes**

- Provides multiple confirmation methods: order confirmation, operation confirmation and transfer confirmation
- Possible to select dispatch, operation schedule or mixed source confirmation
- Supports processing of dispatch and reporting information inconsistencies: supports re-dispatch of resources based on the reporting of dispatch information, and automatic report–dispatch matching by operation schedule.
- Possible to query the cumulative confirmation quantity and completed quantity of operations and dispatches
- Supports re-verification of excess confirmation during approval, to meet the reporting requirement that a predecessor operation precedes a successor operation
- Supports multiple personnel confirmation: according to the crew dispatch during confirmation, you can select multiple personnel within a crew and automatically split the confirmation quantity between them
- Automatic generation of operation transfer documents by confirmation
- Automatic generation of hours records by confirmation

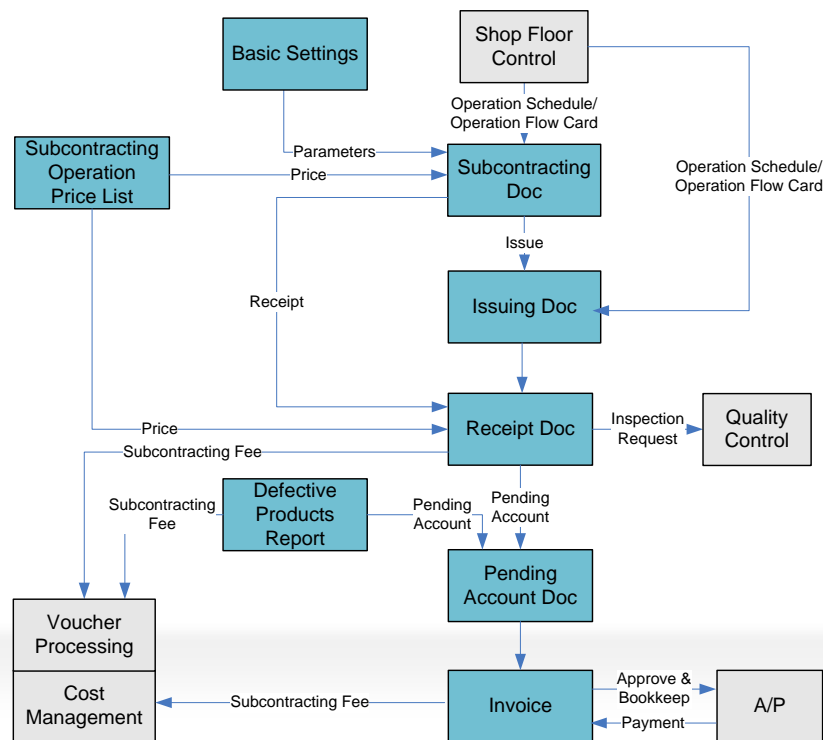
## Key Features -06

### **Supports operation transfer card business**

- Supports division of manufacturing orders into batches from multiple transfer cards. Supports splitting and merging of operation transfer cards.
- Supports partial subcontracting of a given operation and partially user-defined business processes by means of transfer cards
- Two operating modes are provided for transfer card reporting: the first is general execution reporting (post-event), and the second is on-site terminal execution reporting, for easy on-site reporting of execution conditions — qualified quantity, working hours, etc.
- Automatic generation of operation transfer documents from transfer card completion documents
- Supports separate rework processing interface for transfer card transactions, be able to specify rework operation and content, and record rework conditions.
- Supports maintenance of component lot number and serial number on transfer card. Supports transfer card lot numbers and serial numbers. Be able to track and process lot pegging relationship of material batches and production transfer cards
- Provides transfer card WIP status table, transfer card reporting subsidiary table, and transfer card operation data table

# Manufacturing Management → Operation Outsourcing

Supports subcontract processing of items directly issued from and returned to the shop floor, i.e. subcontract processing transaction at operation level.



## Key Features -01

- Establishment of subcontract operation price archives: supports the establishment of subcontract operation price archives by "item + operation" or "supplier + item + operation"; supports recording of Processing Scrap Unit Price and Unit Price of Material Scrap, and expense processing method.
- Supports order placement by subcontracting plan; release of subcontract operations or user-defined operations to subcontractor according to shop floor operation schedule; "rework" type subcontract processing documents can be added manually.
- Two methods of material receipt and issuing are supported in Operation Outsourcing: material issuing strictly to order, and batch issuing of materials automatically matched with the order.
- Effective issue and receipt of subcontract materials: supports operation schedule, material issuing from transfer card and quick issuing based on subcontracting order.
- Defective materials found during current or subsequent operations can be recorded as manufacturing scrap or material scrap by means of a defect report, confirming whether or not the supplier is at fault and granting a settlement deduction.

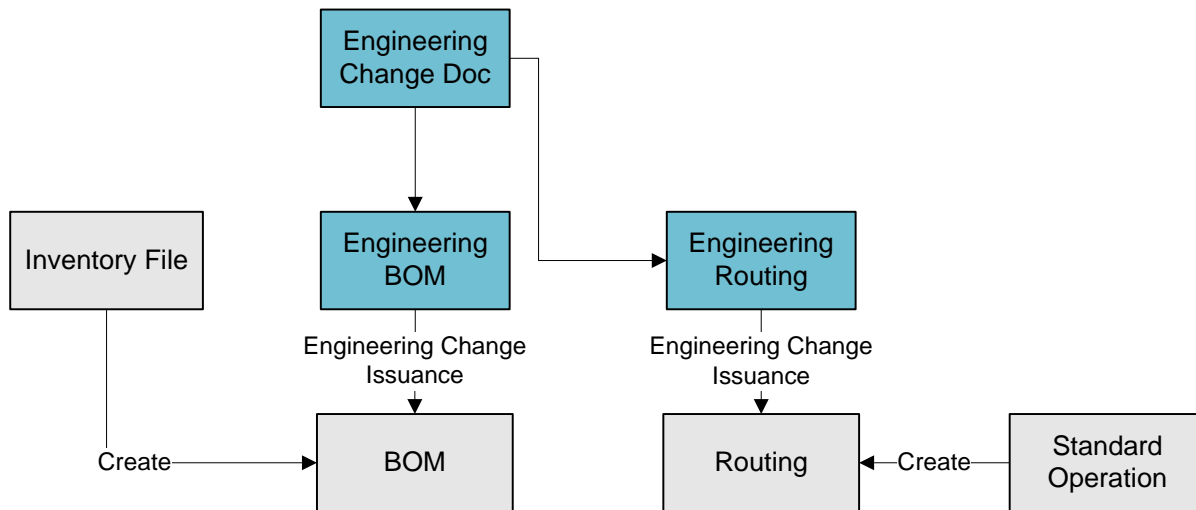
## Key Features -02

- Supports price maintenance during material receipt, and price maintenance or modification based on inspection result
- Supports summarizing of transactions during a transaction period, and confirmation of subcontract pending account; supports cost processing for manufacturing scrap, material waste and rework.
- Supports processing fee invoicing (blue-ink invoice and red-ink invoice) based on pending account document, with optional increment generation of invoices; supports invoice compounding; transfer of processing fee invoice as bills payable to the Accounts Payable module.
- Cost processing: cost accounting supports "Subcontract Processing Fee" cost item, and collection of processing overheads incurred as a result of subcontracting business.
- Supports generation of financial vouchers based on defective goods report, material receiving document, and invoice; possible to set voucher summary.
- Supports subcontracting estimate balance table to facilitate reconciliation.



# Manufacturing Management → Engineering Change

Engineering Change is used for defining engineering BOMs and engineering routings, as well as for management and control of change processes.



## Key Features

- Possibility to implement refinement management throughout the engineering change process: based solely on the engineering change document, it provides full management and control functions such as engineering change document request, approval, release etc.
- Simplifies operations and improves efficiency: supports changing of multiple BOMs and engineering routings based on the same engineering change document.
- Standardizes management of engineering change transactions: engineering change document can complete the approval process by means of the approval flow.
- Multiple versions of engineering change documents: any type of engineering BOM supports multiple versions and version implementation dates.
- Automatic logic verification: automatically checks for logic errors in established engineering BOMs.

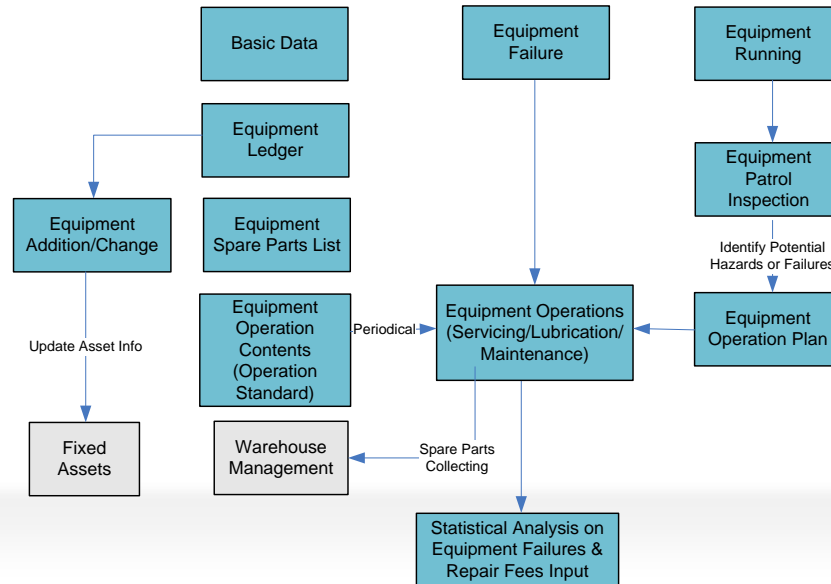
# Manufacturing Management → Engineering Change

## Key Features -02

- Supports price maintenance during material receipt, and price maintenance or modification based on

# Manufacturing Management → Equipment Management

Be primarily for the management of information regarding the use of company equipment, including maintenance of basic and secondary data, routine operation and equipment inspection statistics, preparation of maintenance and lubrication schedules, recording of maintenance and lubrication schedule status, management of equipment maintenance jobs, preparation of job plans, maintenance work order status, equipment failure statistics and analysis, provision of feedback, and other routine maintenance management tasks.



## Key Features

- Establishes equipment classifications and classification ledgers, as well as detailed and comprehensive equipment ledgers.
- Setup of equipment critical spare parts list, querying of critical spare parts requirements and inventory
- Records information relating to each equipment change, including department, equipment location, original value, and status
- Prepares equipment maintenance, lubrication and other job cycles and work standards
- Prepares equipment maintenance plan and issues job tasks according to equipment failures and job descriptions.
- Records maintenance, repairs, lubrication and routine checks carried out on equipment, and supports statistical analysis of maintenance costs and spare part consumption.
- Provides operating records indicating equipment operating status and times.
- Records critical measuring points and measured values in respect of equipment
- Records equipment failures (failure description, failure category, reason analysis) and carries out statistical failure analysis..

# Contents

01

About yonyou up

02

Financial Management

03

Intra -Supply Chain Management

04

Manufacturing Management

05

HR Management

06

CRM

07

Chain-retail Management &O2O

08

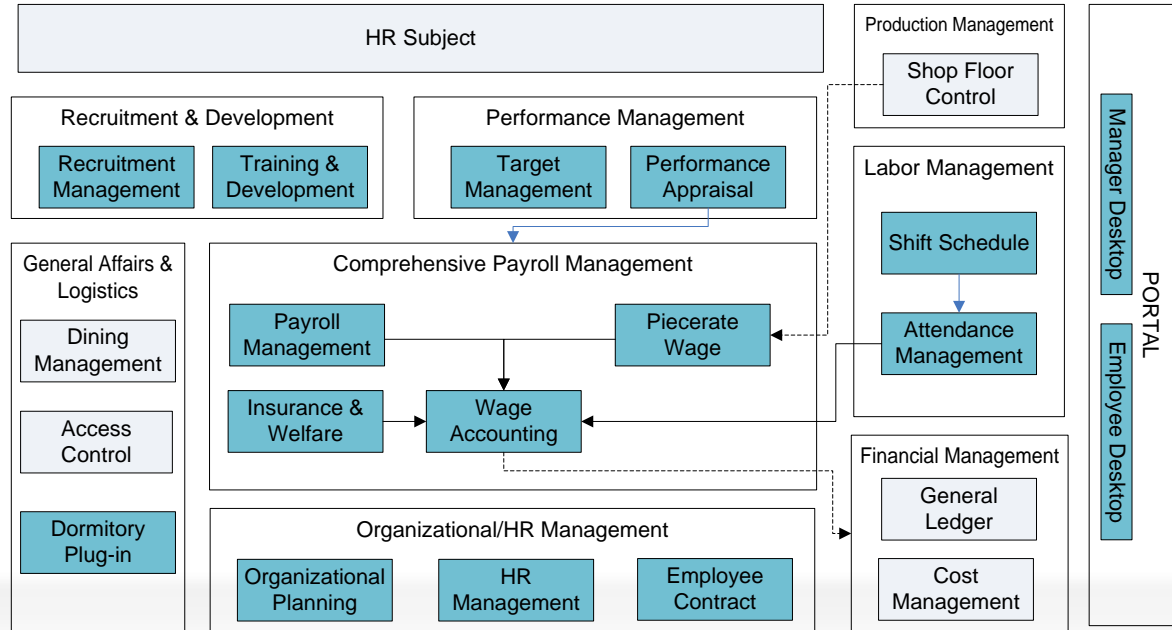
Business Intelligence

09

Mobile Application

# Solution Map

Be designed to provide HR managers, executives, supervisors and ordinary employees with a comprehensive human resource management system covering personnel, payroll, benefits, contracts, attendance, performance, recruitment, training, and other business.



## Value Proposition

- **Helps enterprises to set up a sound human resource management system** (including organizational, job position, payroll, and performance appraisal systems) .
- **Standardizing HR management processes**, establishing a payroll and performance-based system. Most HR transactional process are automatic or assisted to improve efficiency and accuracy, freeing HR personnel from day-to-day affairs .
- **Improving the overall standard of the enterprise's human resource management.**

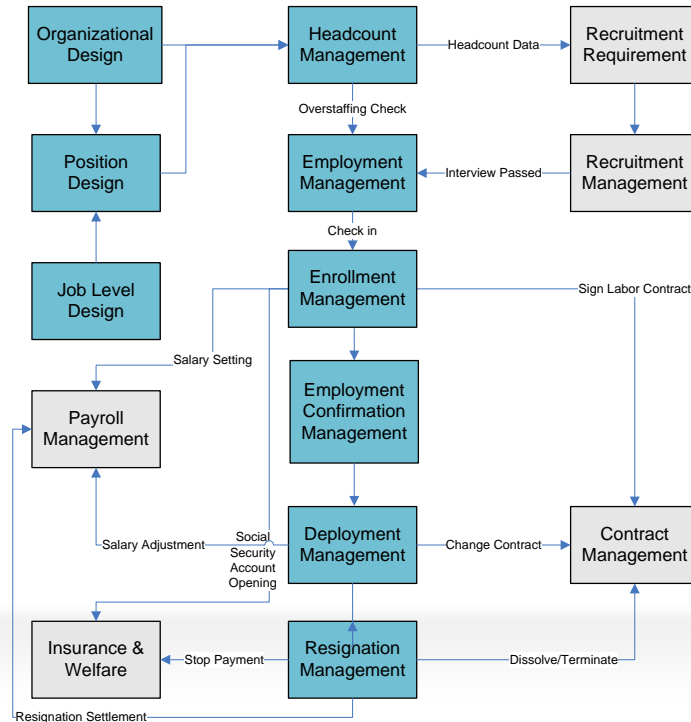


# Main Features

- Personnel management: covers the entire management process from job applications, hiring, induction and employee confirmation to deployment and termination.
- Provides a comprehensive payroll management solution.
- Introduces the concept of benefit schemes, with the option of setting different schemes by regulatory agency (e.g. social security and provident fund center), region, or employee group (e.g. urban workers or migrant workers).
- Management of the entire process including personnel contract class, contract signing, renewal, alteration, and cancellation/termination, in full compliance with China's new Labor Contract Law.
- Provides a comprehensive attendance and card pass solution (consumption, access) for the manufacturing industry.
- Provides comprehensive support for all aspects from appraisal scheme design and performance planning, tracking, monitoring and evaluation to result feedback and application.
- Training management including training resources, training needs, training programs and activities, evaluation and employee training profiles.
- Employees and managers at all levels are involved in every stage of the HR management process via a self-service platform, which improves the efficiency of HR management operations and raises employee satisfaction.

# HR Management → Personnel Management

Be the foundation of the HR system. It is used to maintain an enterprise's organizational structure, position system, job level system and staff information, and to manage hiring, induction, deployment, termination and other personnel transactions.



## Key Features -01

### Organizational Planning

- Maintains the enterprise's organizational structure and position system from a unified user interface.
- The 'crew' is taken as the smallest organizational entity under a department, and is consistently used for the various transactions.
- Provides organization transfer, merger and other tools to help enterprises adjust their organizational structure quickly.
- Integrated user interface for retrieving and viewing information relating to departments and positions, such as direct supervisor, subordinate positions and job holders; enables the user to jump quickly to the relevant page.
- Helps enterprises to establish standard title grade and job level systems.
- Support annuals headcount planning, with control over department and job headcounts.
- Generation of organization charts by department, position and other information.
- Supports succession planning for key positions.
- Supports generation of job descriptions.

## Key Features -02

### **Personnel Transaction Management**

- Employment management: includes approval of new employee job applications, as well as reinstatement applications by former staff.
- Enrollment management: handling of enrollment registration, with notification of the relevant personnel; signing of labor contracts, allocation of employee numbers, time card numbers and other supplementary information related to enrollment.
- Probation management: employment confirmation reminders, approval of new employee confirmation applications.
- Personnel transfer: personnel transfers are managed by means of two processes, namely Transfer Application and Transfer Registration.
- Resignation management: employment terminations are managed by means of two processes, namely Resignation Application and Resignation Registration; terminations are classified under dismissal, resignation, retirement, or voluntary termination.

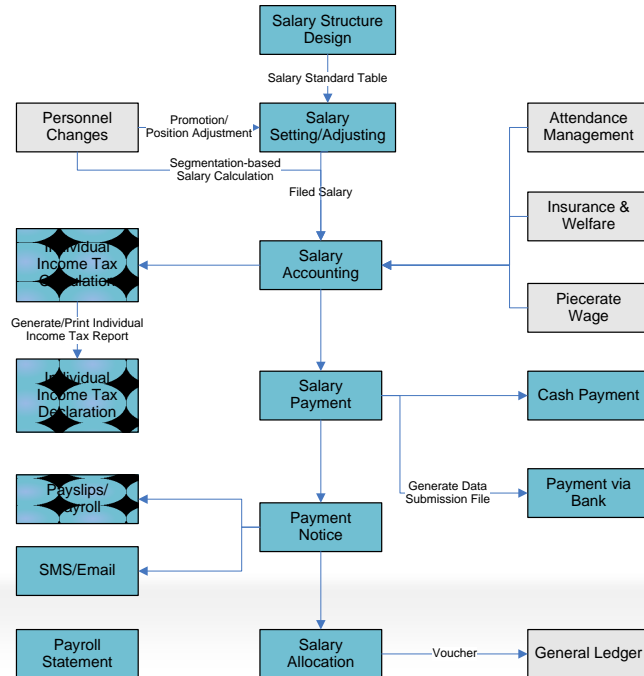
## Key Features -03

### Personnel Data

- Improved user interface for browsing and editing personnel files, with navigation by group to facilitate quick data viewing and maintenance.
- Personnel classification management: different categories of employee can sign different categories of labor contract (e.g., formal employees sign an employment contract, whereas dispatch personnel sign an engagement agreement) and enjoy different benefits; personnel categories can include regular worker, contract worker, temporary worker, or intern.
- Optional settings to control access to the system, such as only allowing employed staff into the system;
- Blacklist management: blacklisting of dismissed employees, to control the application and recruitment of new staff by preventing blacklisted persons from joining any of the enterprise's other companies.
- Identity recognition: data includes name, date of birth, hometown, photo, issuing authority and expiration date.
- Photo batch import.
- Variety of preset HR reports, with the option to define custom reports.

# HR Management → Payroll Management

Be a subsystem of HR and is closely integrated with Personnel, Attendance, Benefits, Piecework and other subsystems. It carries out wage and salary calculations, generating vouchers that are transferred to the General Ledger and Cost systems for labor cost accounting.



## Key Features -01

- Provides definition, querying and browsing of salary standard table, salary standard formula, and other salary system design features.
- Definition of various types of salary transaction, and setup of a salary standard table and payroll standard formula to be used for transactions, with automatic processing of salary adjustment.
- Supports the definition of salary documents and entry of data relating to all types of back pay and deduction by the relevant personnel.
- Data import interface supports importing of salary data in Excel, DBF and other formats.
- Salary categories can be copied for rapid generation of salary category settings and related data.
- Segmented salary calculation: department transfers, salary adjustment and other transactions are calculated separately for each time range.
- Each employee's detailed monthly salary data can be calculated by attendance data, defined calculation formulas and other parameters.
- Supports payment of salary for multiple times or by stages. withholding tax or tax remittance. calculation of hourly wages and piece-rate wages.

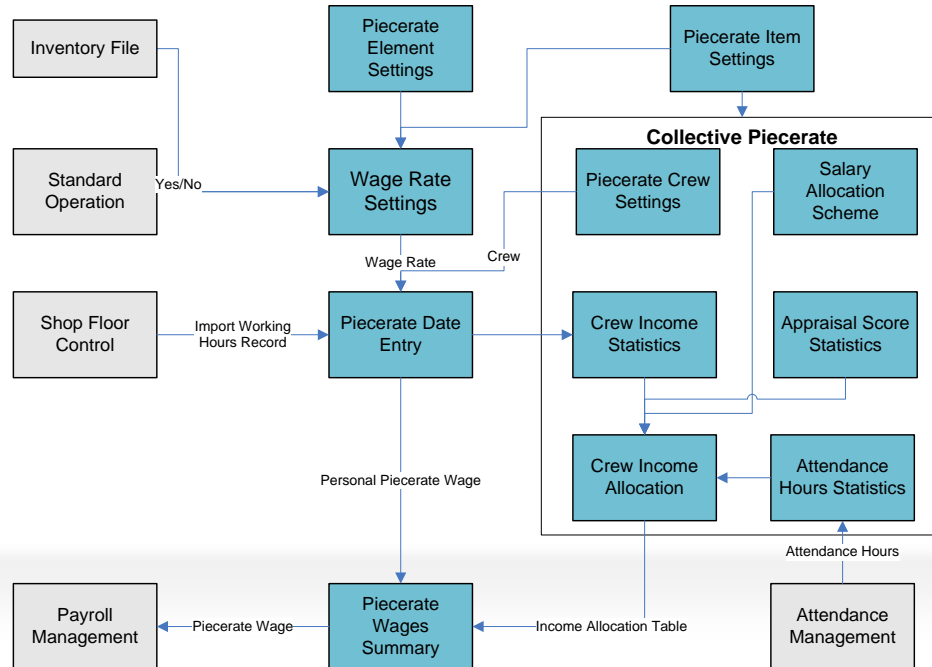
## Key Features -02

- Supports third-party payment by bank, and has a function for outputting bank payment data; also supports cash payment and provides salary cashing list function.
- Supports pay slip printing, confidential pay slips, salary payment notification by email and text message.
- Possible to set and calculate annual leave, personal leave, sick leave, marriage leave, funeral leave and other paid leave, as well as payroll deductions for late/early leave and absence without leave.
- Salary can directly generate vouchers which are transferred to the General Ledger system.



# HR Management → Piecework Rate

Be part of the Salary Accounting system and is mainly used in manufacturing enterprises for calculating employee wages by output or quantity. Piecework rate is categorized into individual piecework and collective piecework. Taking the crew as the unit of measurement, collective piecework calculates the total piecework revenue of a crew.



## Key Features -01

### **Individual piecework: calculation of piecework wages per individual**

- Provides various piecework data entry methods, including employee entry, standard entry, mixed entry and batch generation.
- Supports direct import of piecework data in Excel format.
- Possibility of integrated use with Shop Floor Management, and direct import of production data from shop floor working hour records.
- Supports borrowing of employees from other shop floors, with costs recorded under the borrowing shop floor.

## Key Features -02

**Collective piecework: piecework data is entered per crew, with piecework wages distributed according to the set attributes and allocation scheme.**

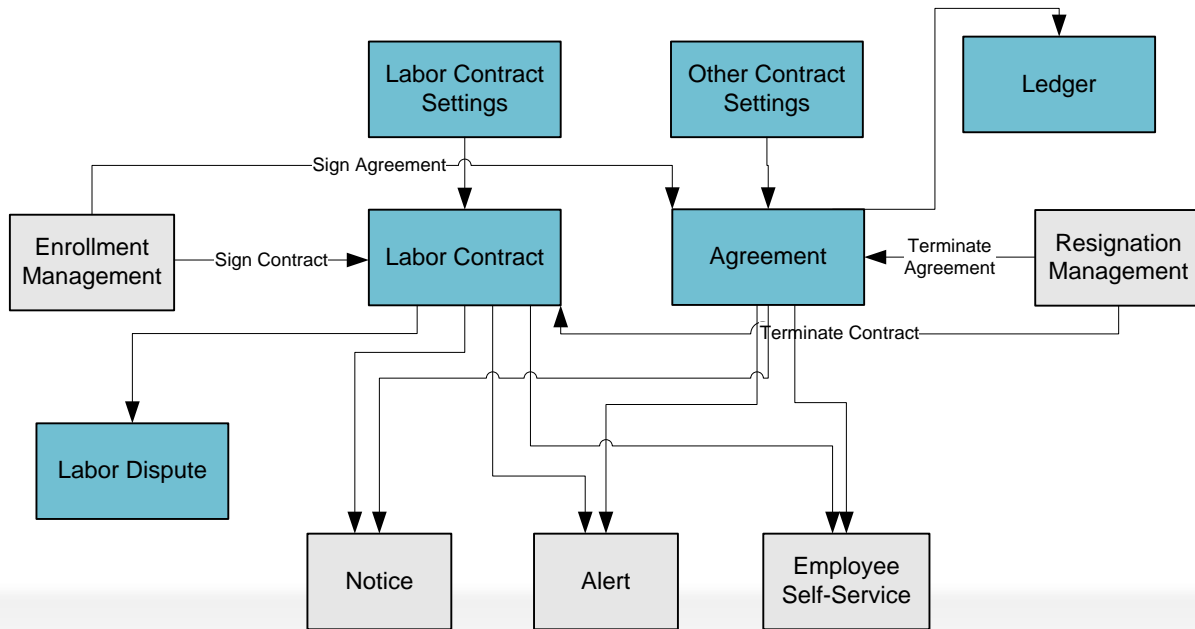
- The system has 15 predefined crew piecework revenue allocation schemes (e.g., Simple Average, whereby revenue is calculated based on the crew's average attendance man-days; Crew Leader Commission + Simple Average, whereby the crew leader takes a certain percentage of the total revenue as commission and the remainder is allocated between the crew members according to the crew's average attendance man-days, etc.). The user can set different revenue allocation rules for each crew.
- Management of piecework crews and crew members, with the option of setting different roles for each member: new employee, group leader, ordinary employee, and special work type. Different allocation rules can be set for different roles when allocating crew piecework revenue.
- Provides various piecework data entry methods, including crew entry, standard entry, mixed entry and batch generation.
- Supports wage allocation based on attendance situation and appraisal score.
- Supports two allocation cycles: allocation by day and allocation by month.

### Key Features -03

- Maintenance of piecework price lists. Pricing elements include product, process, etc., and user-defined pricing elements such as equipment, specifications, etc.
- Piecework rate data is generated by summary on a monthly basis and automatically transferred to the Salary Change component of Payroll Management.

# HR Management → Personnel Contract

Be an agreement that establishes the labor relationship between the employee and the enterprise.  
Effective management of labor contracts reduces an enterprise's employment risks.



## Key Features -01

### **Labor contracts: supports user-defined labor contract types and full contract lifecycle management.**

- Supports custom labor contract types, including addition, modification and deletion of items in each type of contract, and definition of compensation terms, compensation calculation formulas, and model contracts.
- Labor contract lifecycle management (signing, renewal, change, cancellation/termination): meets the requirements of the new labor law, with presetting of common query criteria and reports (such as personnel with contract unsigned, personnel with at least 10 years' service, personnel who have signed two successive fixed-term contracts, etc.), to improve the efficiency of labor contract transaction processing.
- Preset system alerts for multiple HR contract items, which are automatically triggered by certain conditions, such as contract unsigned or due to expire, probation period ending, employee reached retirement age etc., so as to prevent human error.
- The Labor Contract module's integrated e-mail, text messaging and other functions allow employees and their supervisors to communicate with each other regarding contractual matters such as signing and renewal.

## Key Features -02

**Agreement management: supports user-defined agreement types and full agreement lifecycle management.**

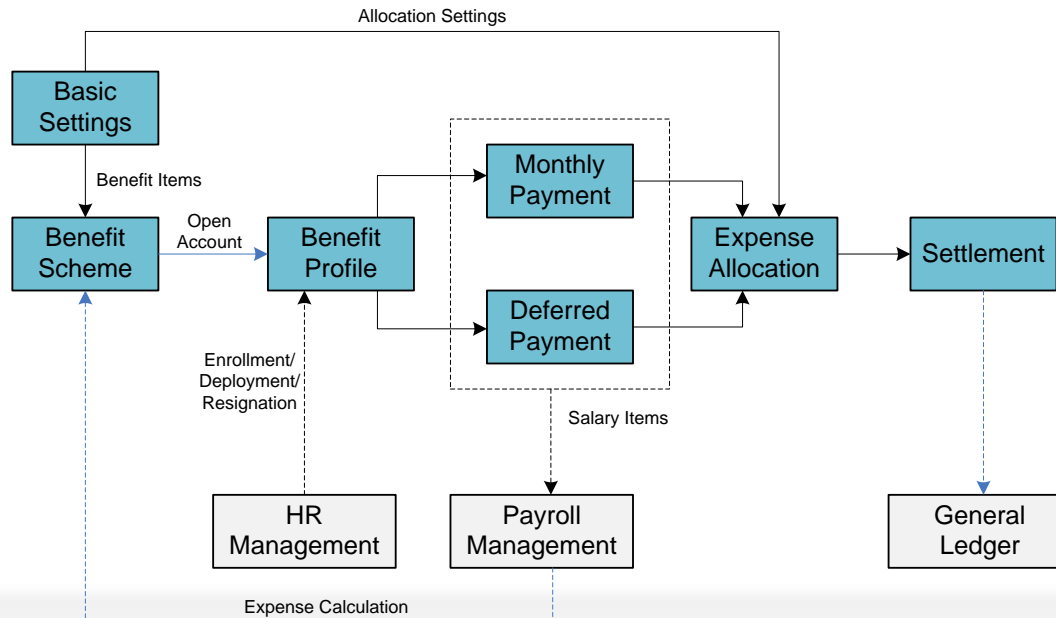
- Computerized lifecycle management (initial signing, modification, renewal, change, cancellation, termination) of position agreements, non-disclosure agreements and training agreements.
- With Ledger Management you can query, print and output personnel agreement information, including employees with signed agreements, employees with unsigned agreements, employees whose agreement has been cancelled or terminated, and change logs. You can also send notifications to employees, department managers and other personnel.

**Disputes and compensation/compensation management**

- Calculation, recording and statistics management of contractual compensation and damages.
- Recording and management of labor disputes.

# HR Management → Insurance Benefit

Be integrated with Personnel, Payroll and other HR sub-products in accordance with different national and/or regional benefit regulations, to provide enterprises with a complete and flexible insurance benefit management solution.





## Key Features -01

**Supports the management of multiple risks applicable to a given group of employees, by consolidating them into one benefit scheme that simplifies the processing of benefit business**

- Social insurance schemes can include five types of coverage—pension, medical care, unemployment, industrial injury and maternity—and benefit scheme management can be authorized to different employees.
- Supports unified processing of benefit scheme business, requiring only one business operation for multiple types of coverage under the same scheme.
- Supports benefit batch account opening, accrual and contribution operations, and automatic generation of supplementary payment records on restoration of contributions.

## Key Features -02

**Insurance benefit policies have regional characteristics, with employee contributions under a given type of coverage differing by region and group. Product supports management of insurance benefit business by country, region or employee department**

- Supports design of benefit schemes by region. For example, design of city insurance and town insurance benefit schemes for the Shanghai area, and social insurance and migrant worker insurance benefit schemes for the Beijing area, with different schemes applicable to different regions and different employee groups.
- Supports management of benefit business by country and region. For example, it is possible to authorize specified administrative personnel based on the region where the employee benefit contributions are paid, and configure payment base algorithms for each type of coverage by benefit region.
- Supports authorization of contribution management personnel by department. A dedicated employee can be authorized to manage benefits for personnel of a specified department: only the specified employee with permission for a given department can open accounts, pay contributions, etc. for the employees of that department.

## Key Features -03

### **Supports both calculation of contribution base by employee group, and contribution bases that are accounted for separately**

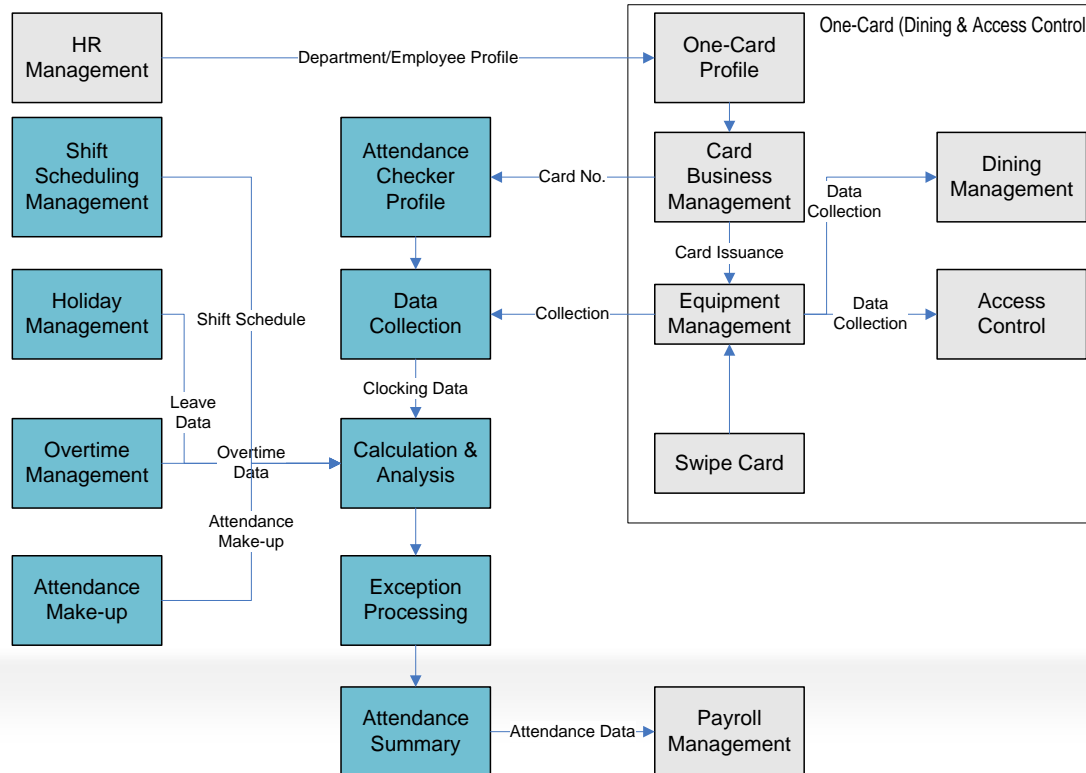
- Different base approval methods can be designed for different employees. For example, the base of new employees by current monthly salary and the salary of older employees by last year's average salary are calculated independently of each other.
- Possible to set base upper and lower limits and a variety of precision requirements for contribution bases.
- Provides independent base approval function. The contribution base of each employee is calculated according to the employee's applicable base approval method, and can be manually adjusted; once approved and confirmed it cannot be modified, to prevent erroneous operations from affecting data accuracy.

### Key Features -04

- Supports direct editing of benefit file and benefit payment list user interfaces, to improve work efficiency.
- Supports creation of one-time benefit or benefit-in-kind transaction documents, such as summer cooling costs, holiday subsidies, and labor insurance products.

# HR Management → Attendance & Card Pass

Be a Comprehensive, all-in-one attendance and card pass solution targeted at the manufacturing industry, retail chains and other service sectors.



## Key Features -01

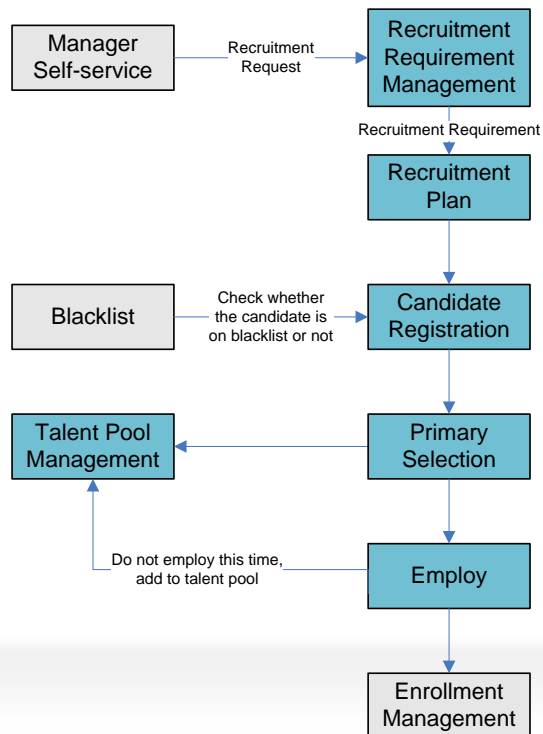
- Supports multiple working hours systems: standard working hours, comprehensive working hour calculation and irregular working hours.
- Attendance mode supports punch card attendance (positive attendance) and non-punch card attendance (reverse attendance, processes leave only).
- Shift scheduling mode supports: 1) Work calendar; 2) Crew shift schedule; 3) Employee shift schedule. Employee shift schedules can be generated automatically by work calendar or crew schedule;
- Shift schedule processing methods: 1) Unified scheduling by the HR department; 2) Excel schedule tables ; 3) Scheduling operations carried out in the attendance system by each department, and approved and confirmed by HR department.
- Supports two-shift, three-shift, continental shift and other shift work modes.
- Temporary shift: on-duty, off-duty and other data in shift schedule tables can be amended directly, without the need to modify the information in the shift profile.
- Attendance make-up time control.
- Automatic processing of consecutive shifts: according to the parameter settings, two adjacent shifts are automatically set as a consecutive shift, negating the need to clock out and back in again between shifts

## Key Features -02

- Overtime compensatory leave: supports setup of all kinds of overtime settlement modes (compensatory leave only, overtime salary settling only, or both), with the option of setting all kinds of overtime compensatory sequence.
- Holiday management: supports setting of leave periods and leave quotas for annual leave, personal leave and other types of holiday.
- Attendance calculation: in addition to the standard attendance algorithm, it is possible to configure the system parameters according to the actual situation, or define custom attendance algorithms.
- Exception processing: provides an exception processing function for carrying out category queries on exceptions, and provides card make-up, leave application make-up document and other exception handling functions to improve work efficiency.
- Attendance exception alerts: system preset alert function for continuous lateness, continuous absence without leave and other common attendance exceptions.
- Provides three attendance machine integration solutions: 1) Clocking card data file 2) Dedicated attendance machine 3) Directly integrated attendance machine.

# HR Management → Recruitment Management

Be an important part of human resource management, providing functions including recruitment channels, requirements, and planning, application management, talent pool management and statistical analysis,.





## Key Features -01

**Recruitment business: provides a variety of recruitment channels, and manages candidates in accordance with recruitment requirements.**

- Can compile full records and manage a variety of internal and external recruitment.
- Dynamic networks collect recruitment requirements and automatically control the recruitment quota, warning of over-recruitment.
- Once approved, recruitment requirements submitted by managers or employees can be entered into the system, and then used to generate a recruitment plan.
- Supports the publishing of recruitment plans on the corporate information portal, and on recruitment websites
- Can establish a talent pool database, handle applicant management, and establish talent pool information for future needs.
- Supports the direct generation of Employment Application.
- Supports the issue of appointment notifications.
- Once applicants are appointed, a personnel file can be accessed via Employment Application
- Supports the configuration of recruitment websites.

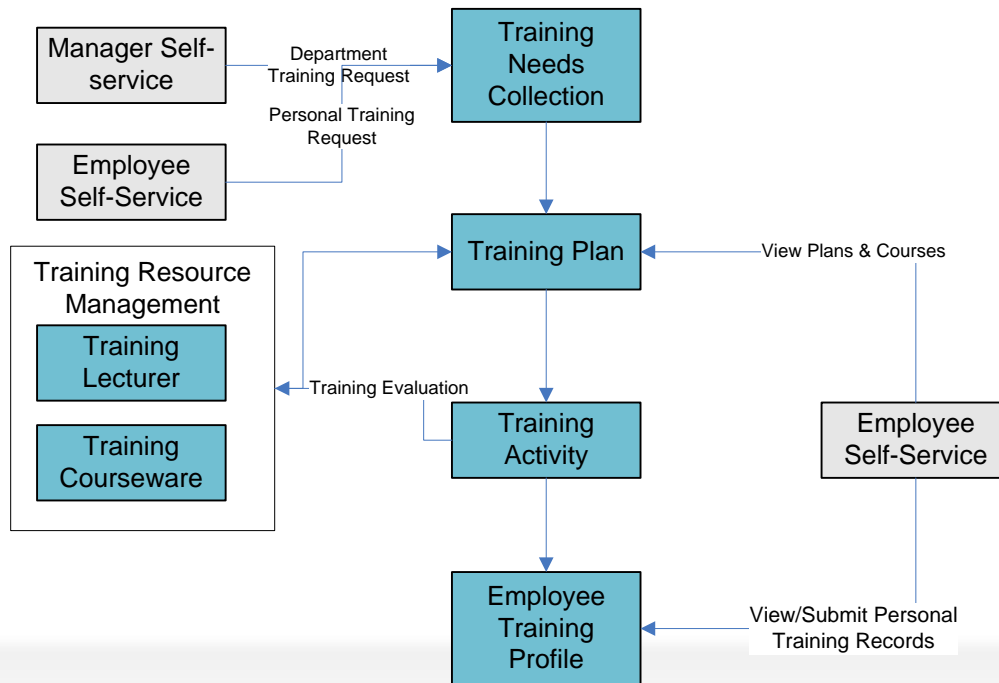
## Key Features -02

**Provides an analysis of over-recruited and vacant job positions, and analyzes data including proportion of applicants recruited.**

- Recruiting requirements can be generated using vacant position data, obtained through an analysis of vacant and over-recruited job positions.
- The system can generate data for employment rate, appointment rate, proportion of plans completed, accurately analyze the achievement of targets during recruitment events, and analyze the budgeted versus actual costs of running employment events.

# HR Management → Training Management

Provides the human resource department of the enterprise with tools to manage the business of training and to process information.



## Key Features -01

**Training business: manages training resources, needs, and planning, creates and maintains personnel training profiles.**

- Records and manages information on training institutions, trainers, training venues and information resources.
- Supports the configuration of training courses based on job positions.
- Can collect training needs on a quarterly or annual basis, and generate a training plan based on training needs .
- Formulates corporate and departmental training plans covering content including training aims, budgets, methods, attending personnel, and times.
- Generates training activities based on the formulated training plan, and publishes training activities on the corporate portal.
- Supports associated queries on trainees during training activities.
- Managers or employees can propose training needs using Self-Service, which, after approval, can be compiled into a final training plan by the human resources department.
- Comprehensively maintains personnel training profiles recording related information on training, results, and times.

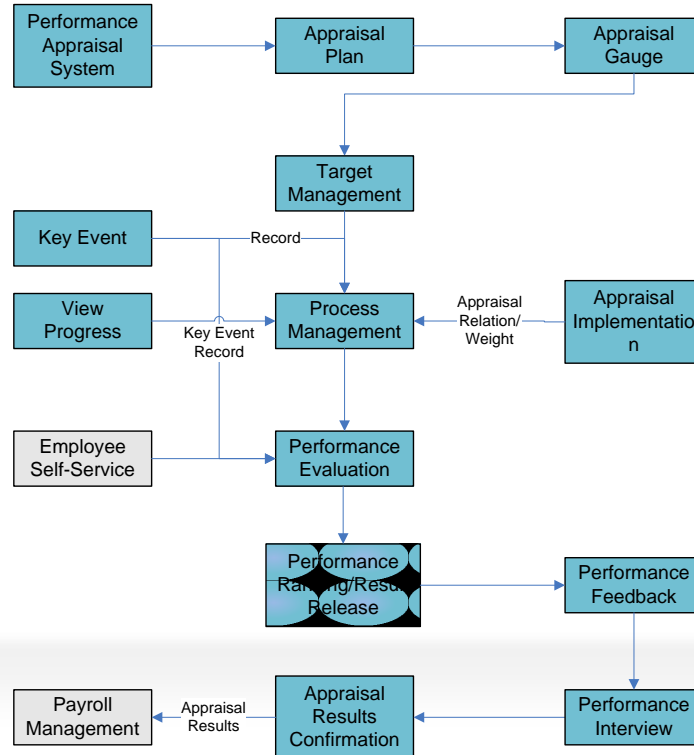
## Key Features -02

**Training analysis: provides analysis of course content based on training needs, and analyzes personnel training profiles by department and position.**

- Conducts an analysis of personnel who have not received training, and uses the results to generate training needs.
- System analyzes employees who have attended training by department, position and training session.

# HR Management → Performance Management

Be concerned with how to control costs, how to improve the capability of the individual and enterprise as a whole, how to maximize effectiveness in the organization and how to find the best balance between input and product



# HR Management → Performance Management

## Key Features -01

### **Supports the creation of a matrix-based appraisal hierarchy**

- Can create an appraisal hierarchy for different job roles.
- Supports the synchronization of data from the U8 job position system to generate appraisal hierarchies.

**Supports the configuration of various appraisal dimensions and analytical methods, appraisal periods can be created based on annual, 6-monthly, quarterly and monthly cycles.**

**Supports various appraisal methods including KPI and target based appraisals.**

**Can create a database for appraisal indicators using different appraisal methods.**

## Key Features -02

**Creates two main types of appraisal schemes based on individual and departmental appraisals,**

- Generates table and work plan templates from appraisal indicators, data columns, and work plan columns, which can be customized and supplemented with content such as notes on how indicators are composed and scores are generated.
- Comprehensive indicator scores can be calculated using three methods, direct, weighted, and weighted evaluation.

**Supports the configuration of forced distribution criteria for appraisal results, so that when appraisals are ranked, the appraisal results for all employees are organized in accordance with the forced distribution criteria.**

**To promote fairness and impartiality, appraisal data is directly read from the business system**

- Uses the UFO function to obtain U8 system data.
- Uses EXCEL to obtain data not held within the system.
- Uses SQL statements to obtain data from third party systems.



## Key Features -03

### **One plan can contain identical appraisal scheme for various cycles**

- Select or deselect target breakdown, target commitment, result confirmation, and forced distribution verification, to determine whether these parameters are incorporated into the table data and are linked to the individual concerned after activation
- The assessor can set different evaluation time frames when scoring the assessee.
- The waiver may be dealt with in three ways: the appraisal can be left unprocessed, can be allocated to another assessor on a weighted basis, or a default score can be used.

**The table will be automatically allocated to the assessor in accordance with the job position in the indicators, and the appraisal hierarchy.**

**The performance of the assessee can be scored and results calculated within the specified evaluation timeframe.**

**The equation set in Salary Management can obtain the result of the current performance appraisal and use it to issue the performance salary.**

## HR Management → Auto-Service

Consists of Employee Self-Service and Manager Self-Service modules, in accordance with usage needs.

- Browse and search a variety of information including my information, person search, salary, welfare and income tax information query, attendance, overtime, and holiday search, and training contract query.
- Various notifications on pending tasks and warning messages to aid the prompt and efficient handling of different types of work.
- Various applications, including HR, attendance, modification of personal information and training sessions attended.
- Management configuration functions including various queries on template configuration.

## Key Features -01

### **Employee information query: employee search using different information**

- Can create an appraisal hierarchy for different job roles.
- Supports quick and fuzzy searches for employees using ID number, employee number, name, and Email.
- Supports fuzzy employee search using department, job number and personnel attributes
- Supports search using different grades in the organization to locate employees in any particular department
- Supports the configuration of employee information to display a specific range of attributes

## Key Features -02

**My information: browse basic personal information; submit applications to modify such information and an HR form granting permission to send HR applications.**

- Supports the configurations of permissions for the viewing and modification of basic employee information, and the range of HR application forms employees can send.
- Supports modification of data and the automatic generation of corresponding modification applications.
- Supports the editing, viewing, submission and cancellation of modification applications.
- Supports the editing of employee photographs and the configuration of current work status.
- Supports the editing, viewing, submission and cancellation of HR application forms and the viewing of approval progress.

**My salary: can view payroll, benefits and income tax information**

## Key Features -03

**Search password: searches for payroll, benefits, and income tax information are protected by one search password; a new password of at least 6 characters must be entered on first use.**

- Information on payroll and benefits can be queried according to year or within specific periods
- Personal income tax can be queried according to year
- Supports the configuration of personal income tax template
- Supports the configuration of payroll and benefits templates for specific employees

**My tasks: displays and handles task information sent through business processes**

- Supports the quick filtering of task information using approval status and selectable categories
- Supports single operations for individual tasks and batch operations for multiple tasks
- Operations supported and approved for self-service currently include - modification of personal data, HR application, attendance swipe card, business trips, holiday leave, leave resumption, overtime, recruitment needs, and training needs.

## Key Features -04

- Warning messages: displays warning messages set by the employee to assist in the timely processing of related tasks.
- My attendance: attendance query, attendance statistics, related applications for overtime
- My leave: once balance query in the leave category has been enabled, queries on holiday balance and use for the corresponding leave category can be conducted.
- My contracts: view the labor contract, training agreement, non-disclosure agreement, and position agreement signed by the employee
- My training: search for training activities completed by the employee, submit training requirements, and apply for training
- System management: options for configuring Employee Self-Service

## Key Features -01

**My homepage: displays and handles task information sent through business processes and warning messages**

- Supports the quick filtering of task information by approval status and selectable categories, can conduct individual operations on a single task, or batch operations on multiple tasks.
- Displays warning messages set by the employee to assist in the timely processing of related tasks.

**HR business: applications for employee transfer, redeployment, or resignation can be submitted; specific business categories can be set through the CS adaptor.**

**Attendance management: query attendance information and statistics, apply for attendance and overtime services**

## Key Features -02

- Employee leave: can manage employee leave; once balance query in the leave category has been enabled, queries on holiday balance.
- Searches can be conducted by leave category, and time, and by employee code, name, English name, and ID number.
- Recruitment needs: can submit departmental recruitment needs; each submission can also be applied to several departments, and will be dealt with in accordance with the recruitment quota.
- Training management: view the training activities employees have attended, and submit training needs, query training records, and submit training needs on behalf of employees
- Contract management: view the labor contract, training agreement, non-disclosure agreement, and position agreement signed by the employee
- Organizational structure: view organizational and job role frameworks, search for detailed information on the organization and job positions, supports portrait and landscape viewing.
- Management query: information on integrated organization, job positions and functions, and personnel, quick search for related information: can use organizational search to view the organizational framework, positions, employees and leaders in subordinate levels; can use employee search to view relevant job position (position description), job functions, organization, and line manager information



## Key Features -03

**Manager reports: issues various reports including defined statistical reports, dynamic reports and integrated analytical reports.**

- Can design defined statistical reports, and apply statistical, cumulative, verification.
- Dynamic reports are reports allocated to users (report permissions can be applied), data from accessible reports can be directly viewed and exported.
- Integrated analysis allows the analysis of simple data, primarily using two dimensional tables, bar charts, and line charts to display analytical results, and provides a pegging function for results.

**Settings management: management of settings in Manager Self-Service. At present, you can configure employee information query and settings for various templates.**

- Settings for employee information search.
- Payroll and benefit template settings.
- Permission settings for employee information.
- Defined template settings.

## HR Management → HR Reports

Provides the enterprise with tools to search, analyze and summarize data on the organizational structure and employees, providing multi-angle search on organizational and employee data.

## Key Features

- Automatically generates report data based on the organizational structure, employee files, salary, benefits, attendance, recruitment and training information.
- Can design different types of reports including defined, dynamic, and cards.
- Reports can be sent and received to facilitate the submission of report summaries to management.
- Can approve and verify reports.
- Report samples can be imported and exported.
- Supports the use of wizards to rapidly generate dynamic reports
- Supports a driver table for the modification of search categories during the design of dynamic forms

# Contents

01

About yonyou up

02

Financial Management

03

Intra -Supply Chain Management

04

Manufacturing Management

05

HR Management

06

CRM

07

Chain-retail Management &O2O

08

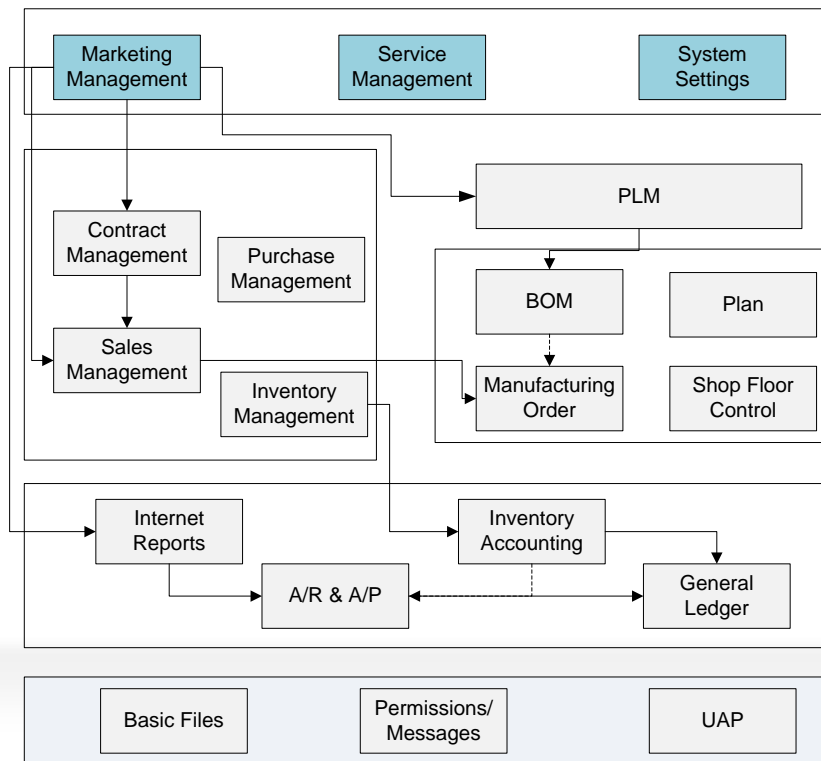
Business Intelligence

09

Mobile Application

# Solution Map

Supports enterprises in their management of all marketing activities in terms of market activities, competitors, sales indicators, sales opportunities, sales quotations, sales orders and management of after-sale service.



## Value Proposition

- Project-based manufacturing enterprises and enterprises in the manufacturing industry where customized orders are common.
- Trade distribution enterprises, especially those distributing production materials.
- Enterprises in the service sector, such as warehousing & logistics, education & training service providers.

# Main Features

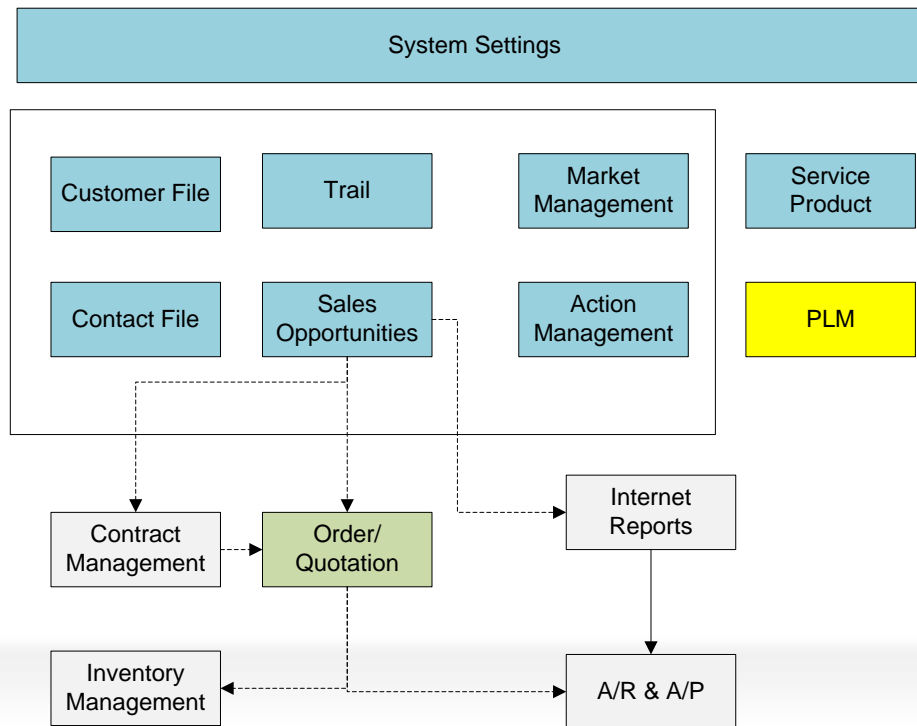
- integrates comprehensive customer information for effective customer management, customer demand exploration, and customer loss prevention.
- improves work efficiency in market management and fine input-output analysis of market activities.
- promotes fast and accurate follow-up of business opportunities, prevents errors in business activities, and improves conversion rate of business opportunities.
- provides marketing managers with timely and accurate information based on core business report query.

## **supports**

- management of customer contact information.
- management of business opportunities & leads/ sales opportunities/market activities.
- management of sales representatives' operations/correspondence/SMSs.
- management of sales quotations/sales orders.
- management of service requests/service work orders/service plans in the service sector.

# CRM → Marketing Management

Be a core business module of CRM that manages all front-end business involving contact with market and customers.





## Key Features -01

### **Supporting front-end business management**

- The product supports management of potential customers and business opportunities through leads and can convert them to contacts, customers and sales opportunities.
- Marketing activities supported: general marketing activities, marketing activities via email, via SMS
- Management of competitor information, including competitor archive, rival products, and order contenders
- Fine management of sales opportunities, including sales opportunity details, stage and activities
- Management of sales representatives' activities, including activity plans, activity results and activity expenses
- The product supports management of customers and key contacts, including management of detailed information, contacts and festival reminders

### Key Features -02

#### **Supporting order management**

- The product supports management of quotations and sales orders.
- Quotation- and sales order-specific operation management is available.
- Also available are quotation- and sales order-specific multi-dimension management of permission, realized through Responsible Person, Relevant Employees and Management Dimension.

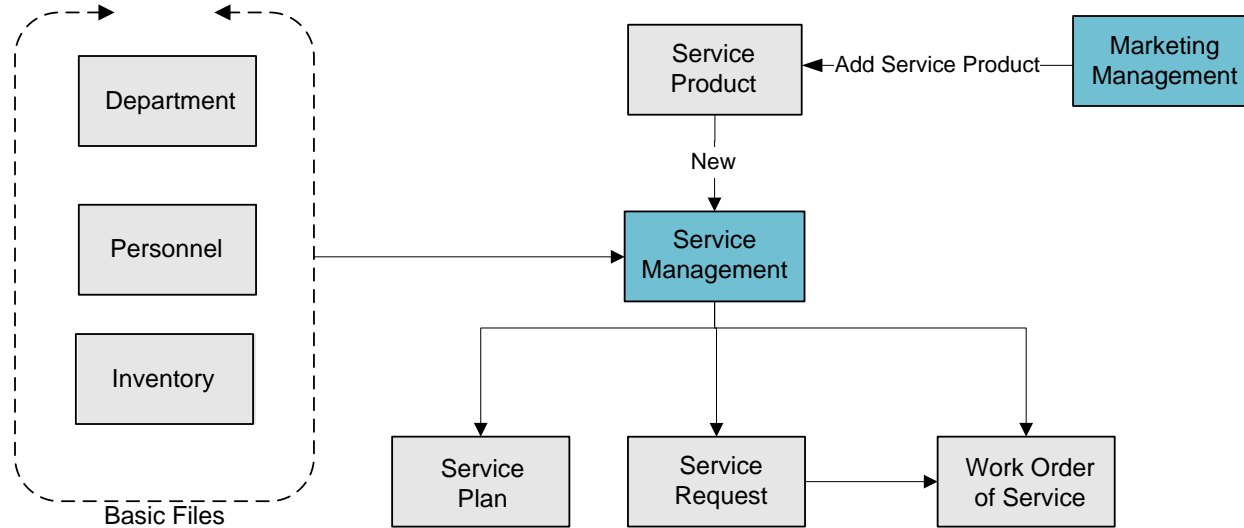
## Key Features -03

### **Supporting customized marketing applications**

- The product supports the addition of UDFs flexibly to meet requirements for customers, contacts, and document information collection.
- It also supports the addition of user-defined objects to meet the requirements of handling personalized business of customers.
- The setting of approval processes and work processes is supported for management of the marketing process.
- Multiple message configuration mechanisms are available.

# CRM → Service Management

Be an important component of whole lifecycle of customer management and a critical module of CRM. It aims to meet the requirements of the customer-oriented business of the after-sale service department and also supports the major business activities of enterprises in the service sector.



## Key Features

### **Supporting management of service objects**

- The product supports both generation of service products by sales orders or the manual addition of new service products; it can also be used to manage service products that have a serial number.
- It supports the maintenance of service plans and the management of active services.

### **Supporting total management of service activities**

- Supports complaints and service calls via telephone .
- Supports management of service requests and management of dispatch for specific service activity.
- Also supports management of detailed process of service activities and the management of service work order and queue assignment.

### **Service knowledge base management**

- Supports the maintenance and management of service repair knowledge base.

# Contents

01

About yonyou up

02

Financial Management

03

Intra -Supply Chain Management

04

Manufacturing Management

05

HR Management

06

CRM

07

Chain-retail Management &O2O

08

Business Intelligence

09

Mobile Application

# Solution Map

- Based on internet, remote terminal application/ unified database can be used to guarantee your data safety and facilitate your multi-site store business;
- A comprehensive solution integrated with Retail business/HQ control/Finance activity/Business analysis/ Mobile application give you short-term and long term supporting;
- A multi-user solution with data shared on time can meet your company for store development/tax declaration/HQ centralized management.

# Solution Map



Vendor Subcontractor Bank Custom Tax Office Share Holder Employee Partner Customer Related Unit

BI Finance Marketing Purchase Warehouse Production Inspection HR

Group Mgt Books consolidation Group finance Settlement center Performance Mgt

Management Account Cost calculation Budget Mgt Capital Mgt Finance analysis

**Purchase**  
Store receiving Purchase inquiry  
Vendor Mgt Purchase contract  
**Purchase Order**

**Production**  
BOM Requirement plan  
MPS  
**Production Order**

**Sales**  
Sales plan Sales forecast  
Quotation Sales contract  
**Sales Order**

Mobile Mgt

Customer achieve  
Sales process  
Service  
Marketing

Coordination

Distribution  
Channel  
HQ  
Marketing  
Price

Inventory Series ID Batch control Shelf time Mgt Stock-taken Transfer Available inventory  
Inspection

**Retail** Price Promotion VIP Statistics & Analysis  
Store sales Cashier daily performance data exchange

Finance G/L AP/AR Income tax returns Online reimbursement Fixed assets Inventory accounting



## **A comprehensive system linking seamless for HQ control**

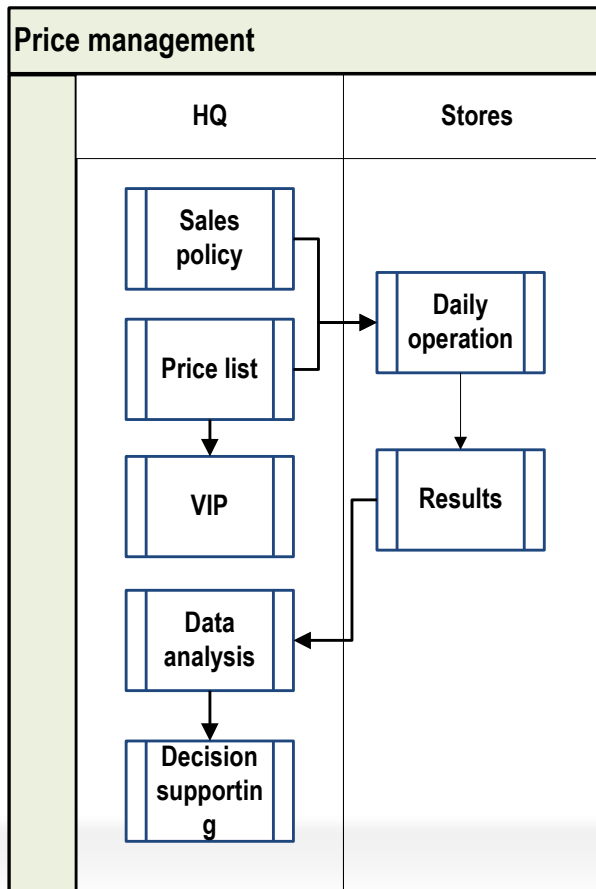
- Store requirement → Purchase consolidation/Purchase plan confirmation → Purchase order release → delivery from vendor;
- Business activity → finance process.

## **Store business can be focused**

- Sales price centralized management for price should be used / strict authority for end user can be configured and monitored;
- Promotion suitable promotion solutions can be set up smartly;
- VIP member VIP degree configuration/ issue/information collection can be linked effectively;
- Purchase requisition/ change/ refuse can be managed in one system; all the process can be tracked in remote HQ ;
- Inventory management all the process (arrival inspection → stock-in → stock-out → variance analysis → finance voucher generation) can be controlled in one system.

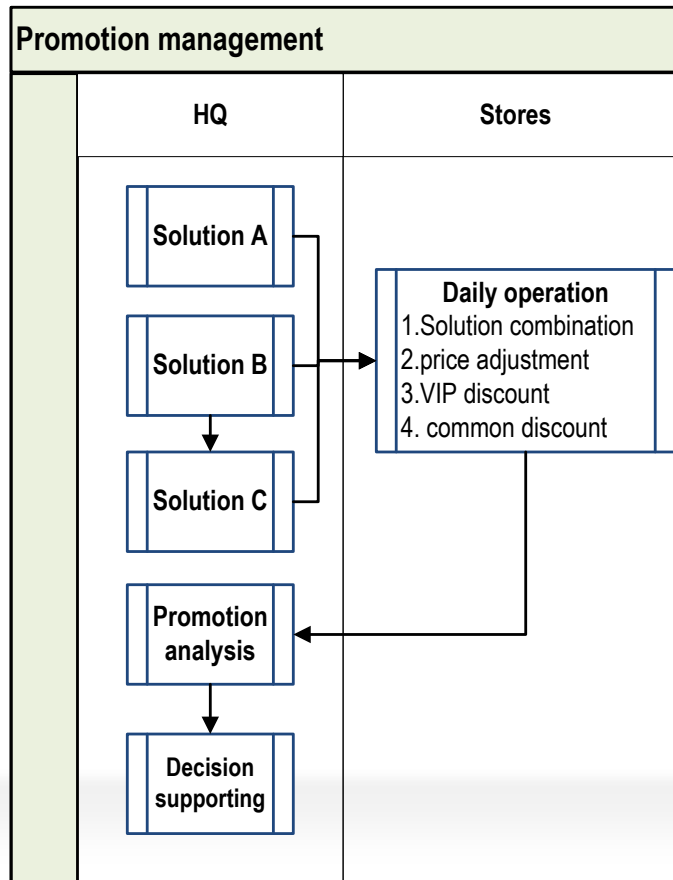
## Chain-retail Management → Price

- Centralized price
- Centralized sales policy
- Centralized authority
- Unified data analysis



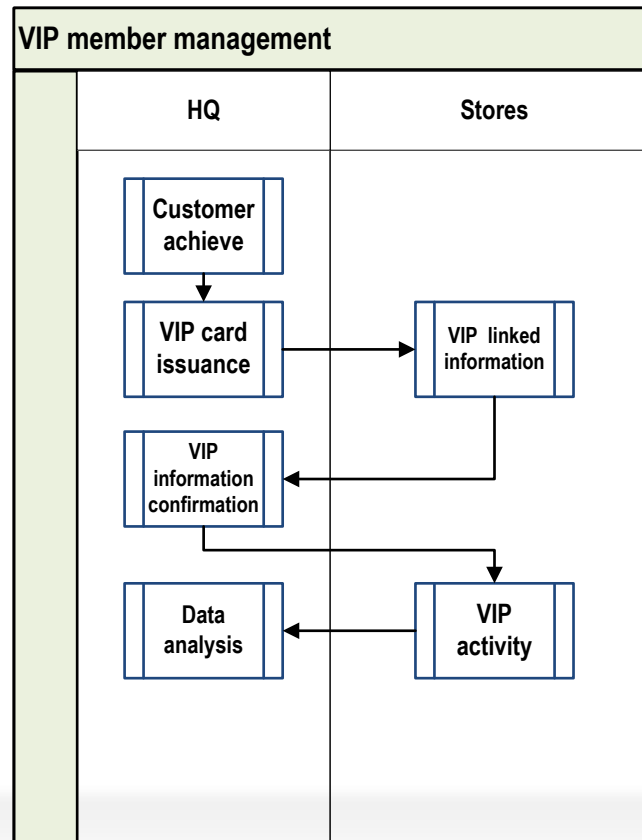
# Chain-retail Management → Promotion

- Suitable promotion solution configuration
- Special promotion for certain item category



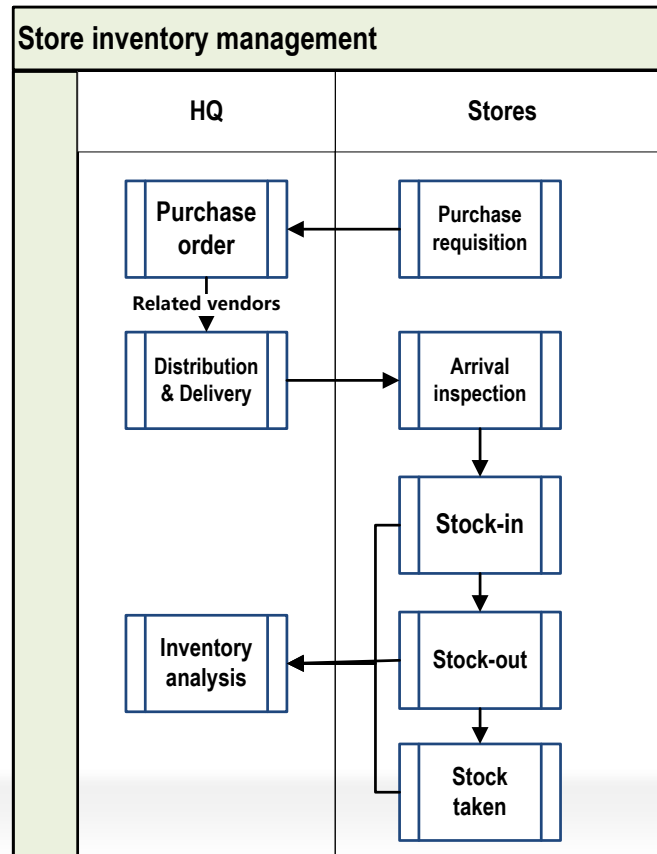
# Chain-retail Management → VIP member

- VIP card issuance
- VIP discount
- VIP gift
- VIP analysis



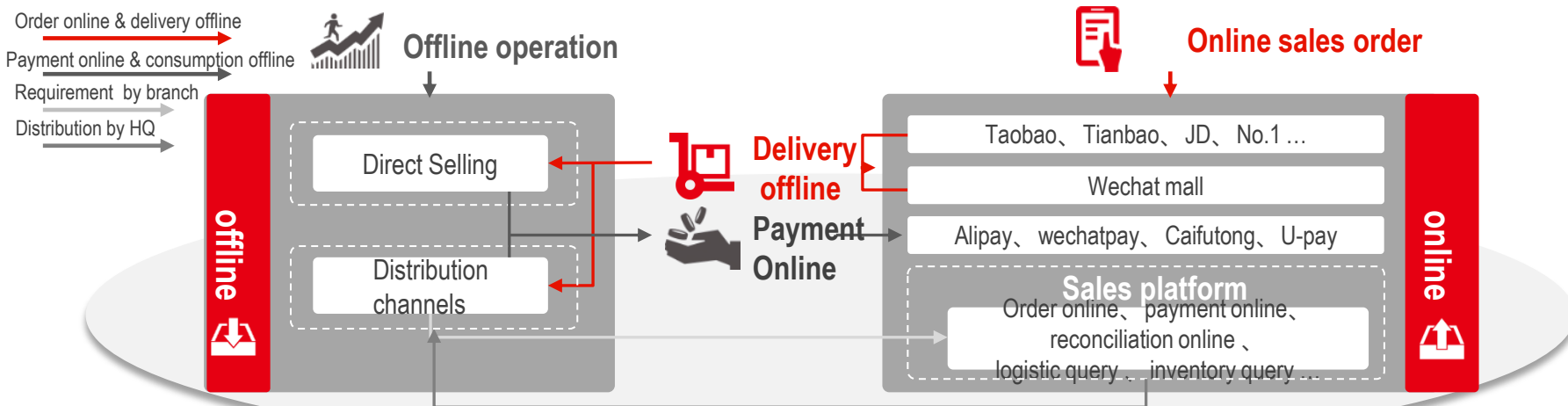
# Chain-retail Management → Store inventory

- Inventory control
- Inventory analysis



# O2O Solution Map

- With O2O solution, your business can be extended in internet+ ;
- Via internet, online business and offline business can be linked in one system;
- As a marketing tool, your customers can be entertained in a smart platform.



# Value Proposition

## **A comprehensive system linking online and offline business**

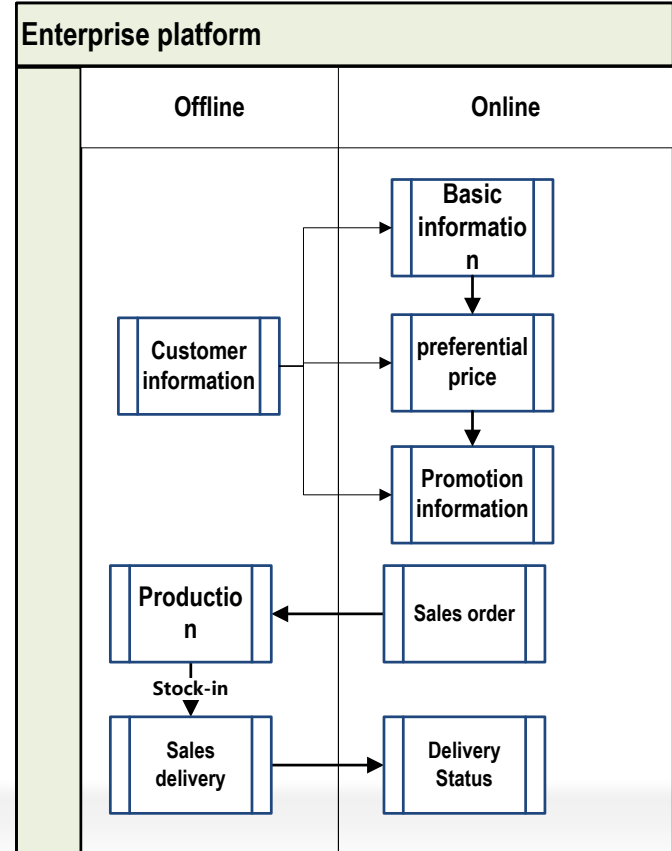
- sales order online → payment online → production plan offline → purchase /production/delivery offline;
- Reconciliation in synchronization

## **customer relationship focused –on**

- A online friendly platform can be used by all customers in trade/communication/ entertainment ;
- Sales order online can be used within one system to save time and sales cost ;
- VIP member VIP degree configuration/ issue/information collection can be linked effectively;
- The information can be shared with third logistic party to quick the delivery speed.

## O2O → U-Order in Enterprise platform

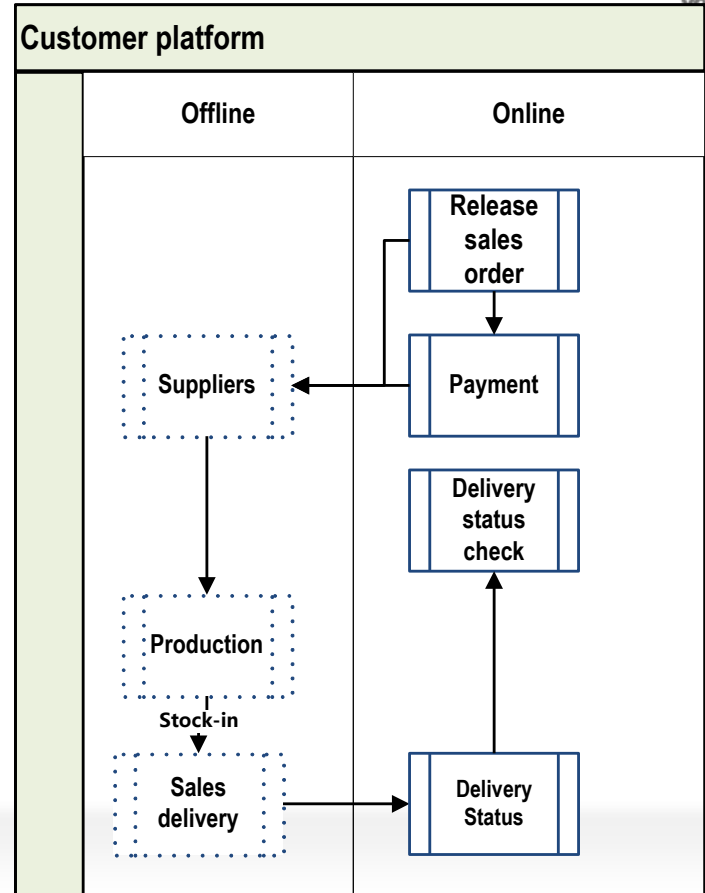
- Customer information and price can be shared online ;
- The mainstream E- commercials can be integrated in one system;
- Sales order status/delivery status/payment status can be shared with customers online;





## O2O → U-Order in customer platform

- Release sales order (returned order ) online
- Payment online
- Delivery status can be checked online
- Reconciliation online



# Contents

01

About yonyou up

02

Financial Management

03

Intra -Supply Chain Management

04

Manufacturing Management

05

HR Management

06

CRM

07

Chain-retail Management &O2O

08

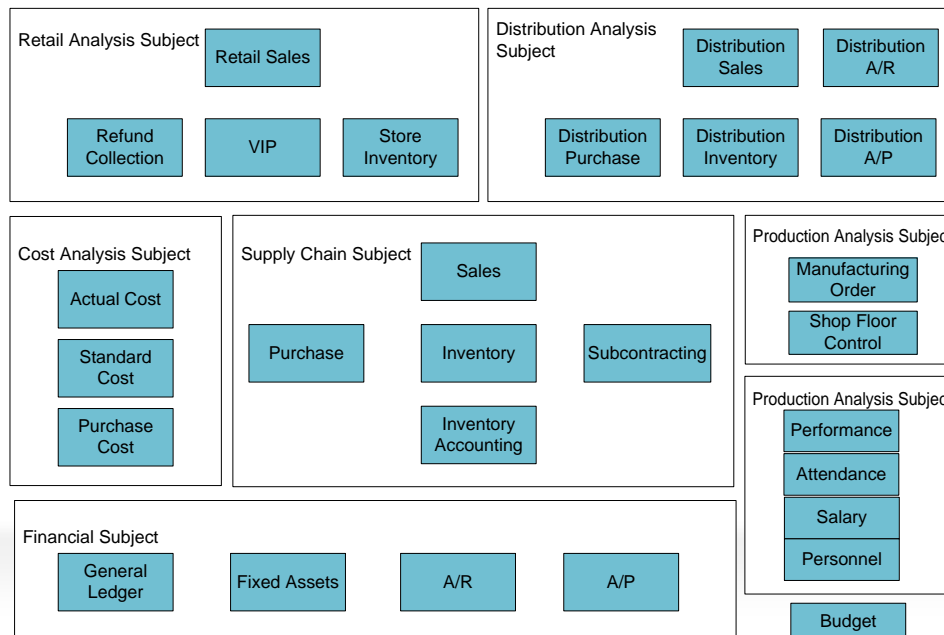
Business Intelligence

09

Mobile Application

# Solution Map

Provide middle and senior managers with a clear and comprehensive platform for monitoring business operations in the enterprise and can provide analysts with a quick, convenient and flexible tool for analyzing business operations, assisting them in supplying management with analytical reports which are more comprehensive and in greater depth.



## Key Features -01

- **Homepage Kanban:** allows managers to customize roles of the homepage kanban, to create a management kanban for different categories, including performance indicators, budget monitoring, and analysis.
- **Report Center:** provides an integrated platform for viewing and managing data from defined reports (static statistical reports). Supports the viewing of a variety of data formats including defined reports from the business system, UFO customized reports, BI reports, and Excel. Report notes (made by the report compiler) and comments (added by management) can be entered and viewed.
- **Query Center:** provides a flexible, Ad hoc query platform. Calls analytical query functions from the BI platform .Supports a variety of search methods included the use single or multiple criteria, incremental search, fuzzy search, customized search and SQL.

## Key Features -02

**Analysis Center:** provides an in-depth and dynamic analytical platform.

- Provides analytical subjects that includes finance, Intra -Supply Chain, manufacturing and cost.
- Provides a variety of basic analytical techniques including, structural, trend, fixed base, and link relative.
- Provides a variety of comprehensive analytical techniques including correlation, what-if and benchmark.
- Provides a variety of advanced analytical techniques including slice, dice, rotate, drill and mine.
- Provides analysis based on reports and indicators.

**Decision Center:** to conduct decision-making for a variety of business; provides a range of decision analysis models.

- Financial: DuPont model
- Inventory: 80/20 rule - ABC classification.
- Sales: cost-volume-profit analysis, target profit analysis
- Provides model definitions in accordance with project tariff methods.

## Key Features -03

- **Indicator Center:** provides a comprehensive platform for the definition, maintenance and management of indicators.
- Supports the definition, classification, maintenance and management of indicators.
- Provides an analysis system for self-defined indicators, including the analysis of indicator logic and link creation.
- Supports the entry and maintenance of grades, classifications and standard values for indicators.
- Provides display settings and link analysis for the indicator dashboard, and traffic light monitoring.
- **Alert Center:** provides a unified platform for managing alert mechanisms.
- Supports the configuration of alert thresholds (upper and lower).
- Supports the configuration of multiple alert rules (unilateral, bilateral, and multiple-condition).
- Supports the editing of alert information (information displayed).
- Supports the configuration of various alert modes (dashboard and traffic lights, Email, SMS etc.).
- Provides alert linking and analysis (direct analysis of alert information).
- Supports the classification and maintenance of alert information.
- Supports the scheduling and maintenance of alert tasks.

## Key Features -04

**Publication Center:** gives users a platform to publish a variety of information and to manage subscriptions.

- Publishes information (messaging services), including broadcast services, peer-to-peer services (the transmission of specific information via a specified method, to specified persons at a specified time), real-time and scheduled services.
- Provides subscription functions (pull services) covering content, period, method and other subscription.
- Option settings.
- Supports the delivery of subscriptions through Email and SMS.

## Tools for Analysis Reports

- Quick customization of the type of analysis report.
- Chart presentation format.
- Supports real-time analysis.
- Supports analysis of warehouse capacity data.
- Supports various types of background databases.
- Supports the quick installation and deployment of lightweight platform tools.
- .

## Key Features -05

- **Safety Stock Model**
- Supports the use of simple probability to calculate safety stock, primarily for sales business stipulated in stock inventory files.
- Configures parameters for algorithm schemes with different calculation rules.
- Can set algorithm schemes for different inventory classifications or files, and set the precision of calculation results.
- Can view and adjust calculation results for safety stock, and publish the final calculation result in the current inventory file SOB.
- **Product Association Model**
- Uses association algorithms to find the relationship between products and product categories, to conduct promotions, bundled sales, or appropriate store layout design.
- Recommends associated products to VIP clients after they have purchased products from the store, in accordance with client characteristics and information about the product purchased.
- Uses VIP customer characteristics to analyze behavior of similar VIP customers.
- Uses specific sales strategies to find the corresponding target VIP customer group, and recommends product lines in accordance with the characteristics of the target group.



## Financial Subject Analysis

- Achieves financial subject analysis over multiple enterprises, multiple years, and from multiple angles (by account, department, project, and transaction) using the U8 system as a basis. Financial subject analysis primarily focuses on enterprise solvency, operations, profit, development, cash, A/R and A/P, and fixed assets.
- Financial Subject can assist managers in monitoring business operations in the enterprise, projecting future business, strengthening management of internal operations, and maximizing performance. This product guarantees the reliability, relevance, timeliness and flexibility of financial information.
- Financial Subject provides decision analysis tools, including Du Pont analysis, enabling decision makers to manage business decisions by simulating the effects of strategy modification on business performance.

## Intra -Supply Chain Subject Analysis

- Regarding purchase, sale and stock, Intra -Supply Chain subject analysis can be conducted over multiple enterprises, multiple years, and from multiple angles (by inventory, client, and supplier etc.) using the U8 system as a basis. Intra -Supply Chain subject analysis primarily focuses on subjects including enterprise sales, purchase, inventory and subcontracting..
- Intra -Supply Chain Subject can assist managers in monitoring the status of purchase, sale and stock, to achieve more precise management.
- Sales subject analysis provides data pertaining to sales plans, orders, shipping, returns, invoicing, expenses, and collections, and analysis on sales orders, performance, and profit.
- Purchase subject analysis provides business data on PO, arrivals, returns, invoicing, and payment, and can conduct comprehensive analysis on purchase items.
- Inventory subject analysis provides business data on inventory management and accounting, and can conduct analysis on inventory items.
- Subcontracting subject analysis can provide business data on subcontracting orders, arrivals, returns, invoicing, payments, materials used and costs, and conduct analysis on subcontracting costs, quantity, price, documents, time and payment.

## Manufacturing Subject Analysis

- In accordance with corporate aims and requirements regarding manufacturing, supply manufacturing analysis can be conducted over multiple enterprises, multiple years, and from multiple angles (by finished goods, material, and orders etc.) using the U8 system as a basis. Manufacturing subject analysis primarily focuses on product completion, manufacturing efficiency, and manufacturing consumption.
- Manufacturing Subject can assist managers in achieving flexible and effective management by monitoring manufacturing in the enterprise and promptly identifying bottlenecks that may affect production. This product guarantees the reliability, timeliness and continuity of business data.

## Cost Management Subject Analysis

- In accordance with corporate aims and requirements regarding cost management, cost management analysis can be conducted over multiple enterprises, multiple years, and from multiple angles (by product, supplier, department, and cost item etc.) using the U8 system as a basis. Cost management subject analysis primarily focuses on the costs of materials purchased externally and manufacturing.
- Data is sourced for business modules including U8-ERP Purchase Management, Cost Management, and Inventory Management.

### Budget Subject Analysis

- In accordance with corporate aims and requirements regarding budget management, budget subject analysis can compare financial and business budgets with actual expenditure, and analyze budget implementation. The system also supports the setting of alerts on actual business data, using budget data as a basis.
- This system supports two methods of integrating budget data.
- Budget preparation data can be directly imported from the enterprise U8 budget system.

## HR Subject

- In accordance with the aims and requirements of the enterprise regarding HR, HR subject analysis can conduct analysis on several aspect of HR business including performance, attendance, and salary.
- HR capability indicators mainly include an analysis of the quantity of human resources in relation to capability, including educational ability, turnover, age, and job title.
- HR operational ability indicators mainly include an analysis of operational ability reflected through the various stages of the HR cycle: HR planning, recruitment, training development, appraisal evaluation, salary, and labor relations.
- HR efficiency indicators refer to an analysis of the basic efficiency standards HR management shall reach, an also serves as an indication of how effectively HR strategies have been implemented.

### Distribution Subject

- Several medium and large BI projects for companies including Tread, Xstep, and KOSE, have already provided feedback on distribution and retail-orientated BI analysis, which has been formed into a set of generally defined analysis indicators and reports. Based on such experience, the “Distribution Business Subject” is a further refinement of the application of BI analysis, which uses the Tread and Mesuca projects as a model.
- Designed for distributors, it provides targeted analysis of sales, inventory and purchasing, as well as generating corresponding analysis reports on the performance of sales channels, and inventory status;
- Supports comprehensive analysis using U8, distribution and retailing on one platform.
- Distribution subject is only supported in the Group Edition.

## Retail Subject

- Primarily designed for analysis of sales performance for retail end-users, inventory and customers.
- Supports analysis of standard and account sales, as well as analysis on branch stock, promotions, customer flows, and VIP customers.
- Supports comprehensive analysis using U8, distribution and retailing on one platform.



# Contents

01

About yonyou up

02

Financial Management

03

Intra -Supply Chain Management

04

Manufacturing Management

05

HR Management

06

CRM

07

Chain-retail Management &O2O

08

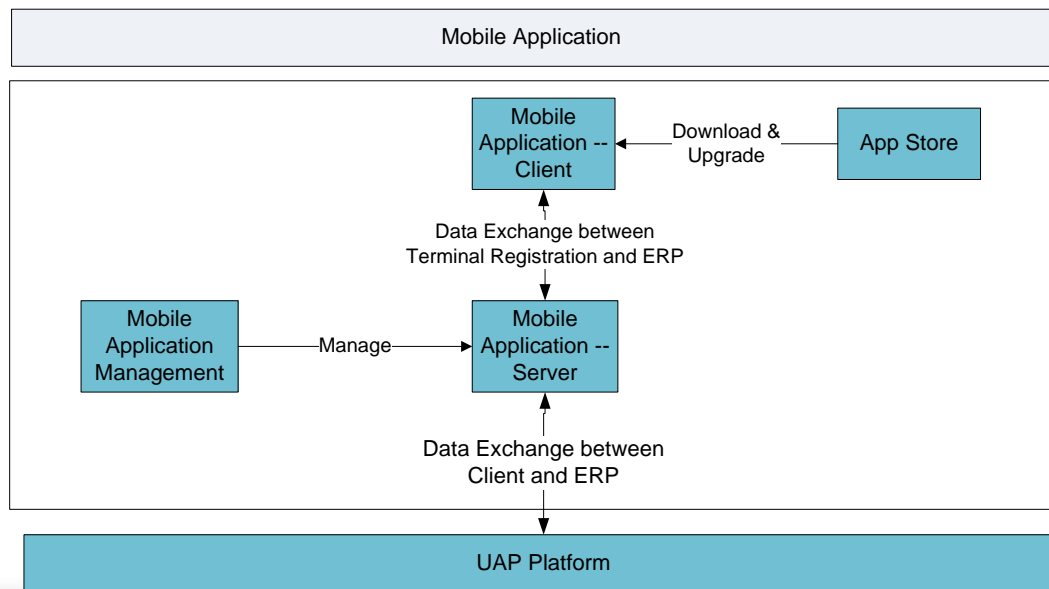
Business Intelligence

09

Mobile Application

# Solution Map

Provides client mobile apps for smart phones. This version supports iPhone 3/iPhone 4 (operating systems iOS 4.0-5.0), and Android smart phones, Android operating systems 2.2, 2.3, 2.4, and 4.0. Resolutions of 400x800, 480x854 and 1280x720 is supported.



# Value Proposition

- Expands and extends the use of the ERP system, enables sites and personnel access to the ERP system anywhere and at any time.
- Extends document approval operations to the mobile phone, approval can be conducted at any time, standardizes the corporate management workflow.
- Uses the mobile client to notify related personnel of crucial information on the ERP system promptly, quickly and automatically.
- Management staff can view the operational management status and key performance indicators for the enterprise at any time.
- Increases work efficiency of salespeople, effectively manages client resources.
- Can promptly enter sales orders and monitor and track orders at any time, increase efficiency of order placement and implementation.
- Can query and process client information at any time, can promptly obtain related information and grasp business opportunities thus achieving client-centric sales.
- Daily tasks can be done and recorded at any time, ensuring a better handle on sales process detail, reducing centralized compilation and reporting, and utilizing fragmented time to complete a large volume of daily filing work.

## Overall framework diagram

System	Applied roles:	Deployment	Primary Function
Mobile App Server	Enterprise System Administrator	Installed on the corporate server	Provides client registration, and data transfer between the ERP system and the mobile app client.
Mobile App Management	U8 System Administrator	Installed with U8 on the corporate server	Provides page management for the mobile app server.
App Store	Mobile User	Apple website, Yonyou mobile app center <a href="http://app.yonyou.com/app/">http://app.yonyou.com/app/</a>	Downloading and upgrading the mobile client program
Mobile App Client	Mobile User	Installed on the mobile terminal	Mobile terminal functions based on document approval, news query, and report query.

## Main Features

- The mobile client is connected to U8 through the Yonyou mobile application server, and can support continuous updates and version upgrades.
- Creates a customized mobile management platform for management staff, including the synergy of daily business, approval of daily issues, and query of critical business reports.
- Users can view and receive documents pending approval as they are generated by U8, approve documents and transmit the approval result back to U8.
- Is seamlessly integrated into the U8 information alert platform, uses the mobile client to notify related personnel of crucial information on the U8 system promptly, quickly and automatically.
- Supports mobile display settings, providing multi-dimensional chart displays including sales status analysis, sales plan implementation, quantity on hand query, sales order execution statistics, purchase cost trends and daily funds reports.
- Seamlessly linked to the ERP Business System, including U8, CRM, U8 Sales Management, unifies mobile and PC clients.



**用友优普** | 企业互联网应用领导者  
yonyou up

*Move Fast*

# Solution Map

this is simple page